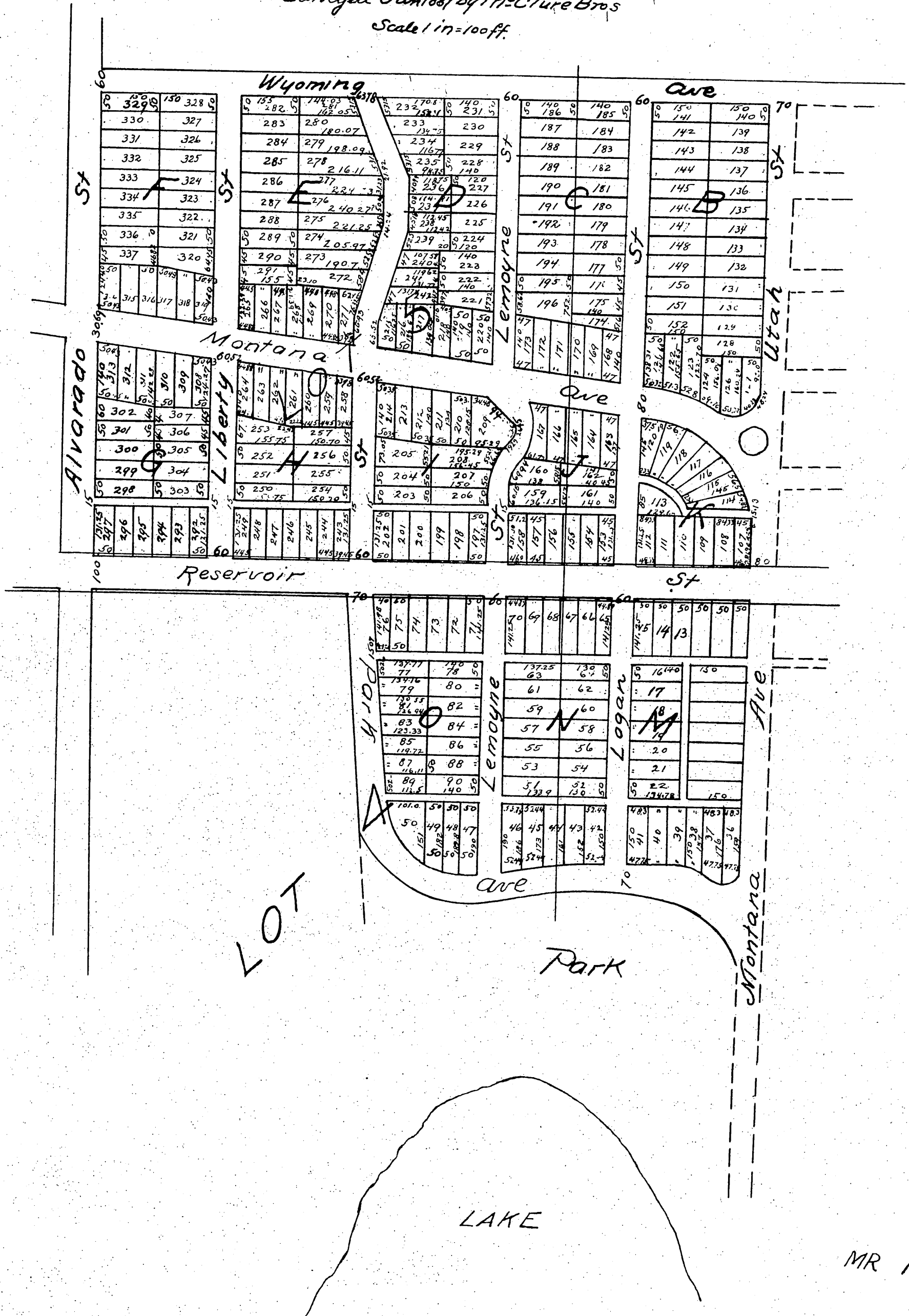
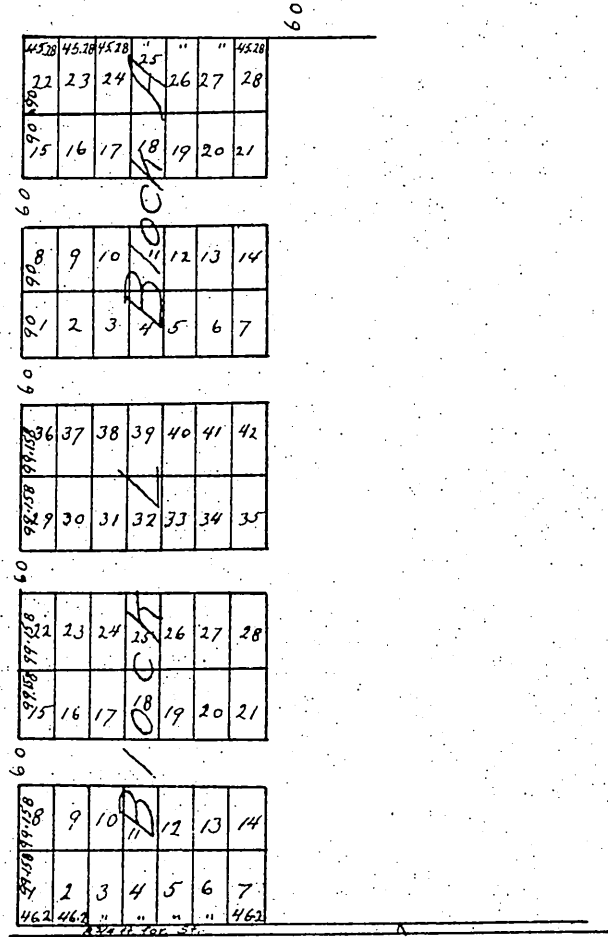


# MAP OF THE MONTANA TRACT

Being parts of Lots 3 & 4 Blk 40  
and Lots 5 & 6 Blk 41  
Hancocks Survey  
Surveyed Jan 1887 by McClure Bros  
Scale 1 in = 100 ft.





A full true and correct copy of the original (reduced to scale of 250ft to one inch) recorded June 8, 1887 at 3<sup>11</sup> p.m. at request of Pickett and Kelley  
 Frank A. Gibson Co. Reco  
 by George Bugbee Deputy