

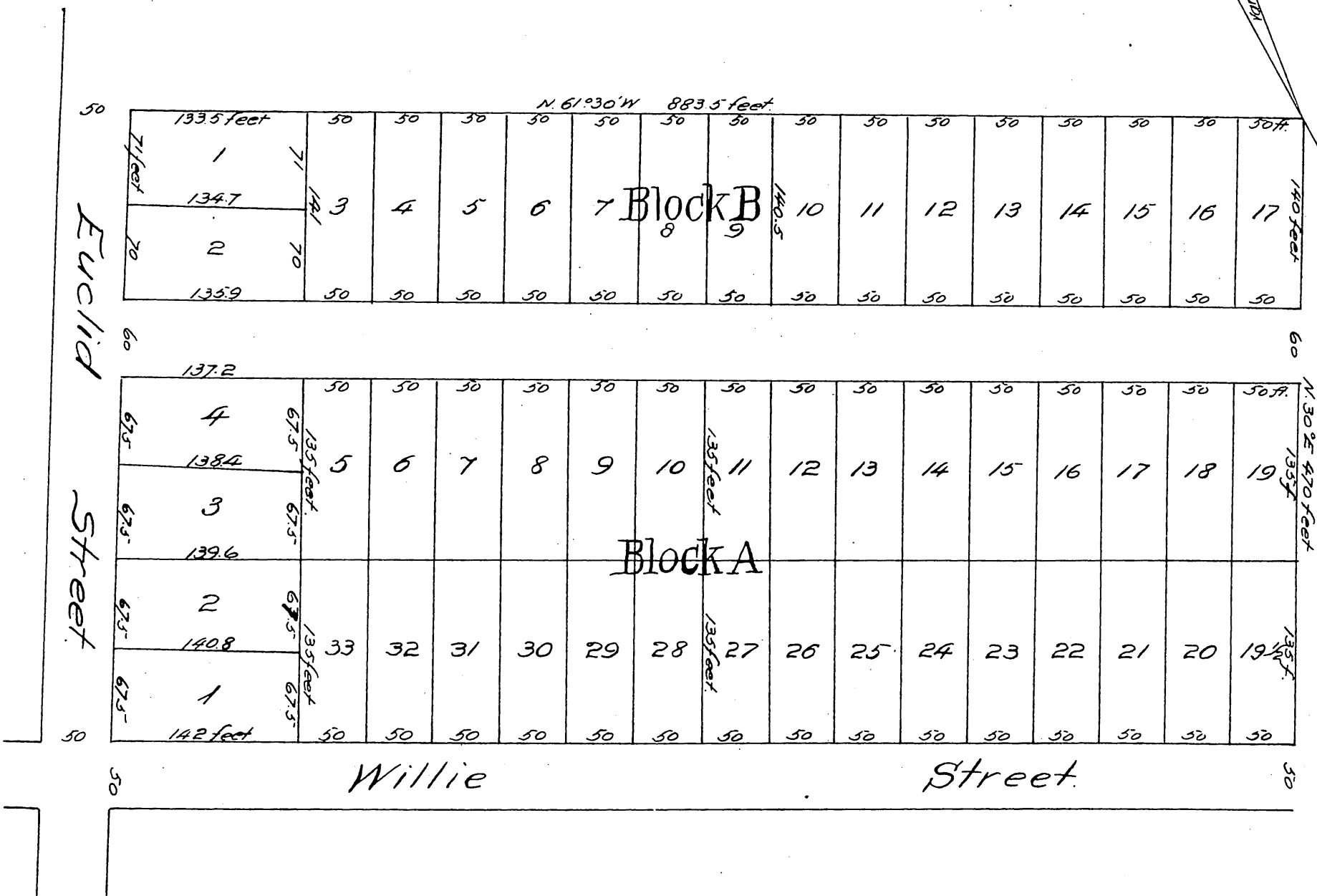
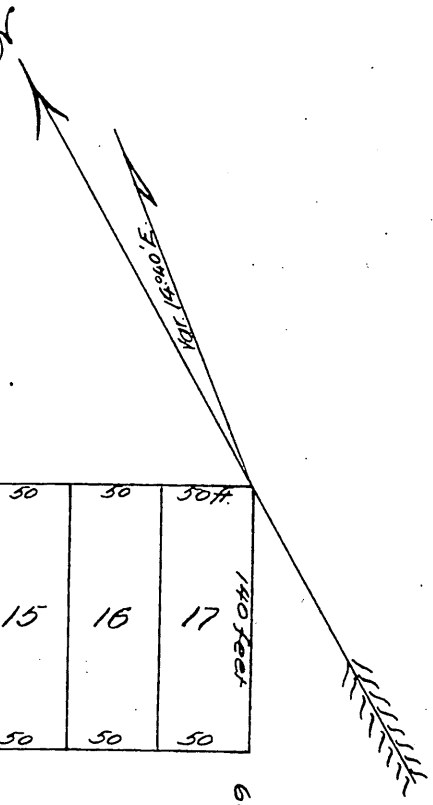


Hammell's Subdivision

of Lots 31 and 32 of Workman and Hellman's
Subdivision of Lot 2 in Block No 72 Hancock's Survey

Surveyed in May 1887 by A. Leon Cervantes.

Scale 100 feet to one inch.



A full, true and correct copy of the original
recorded June 9, 1887 at 47 min. past 3 P. M.
at request of J. S. Owens.

Frank A. Gibson. County Recorder.
By Geo. Bugbee. Deputy.