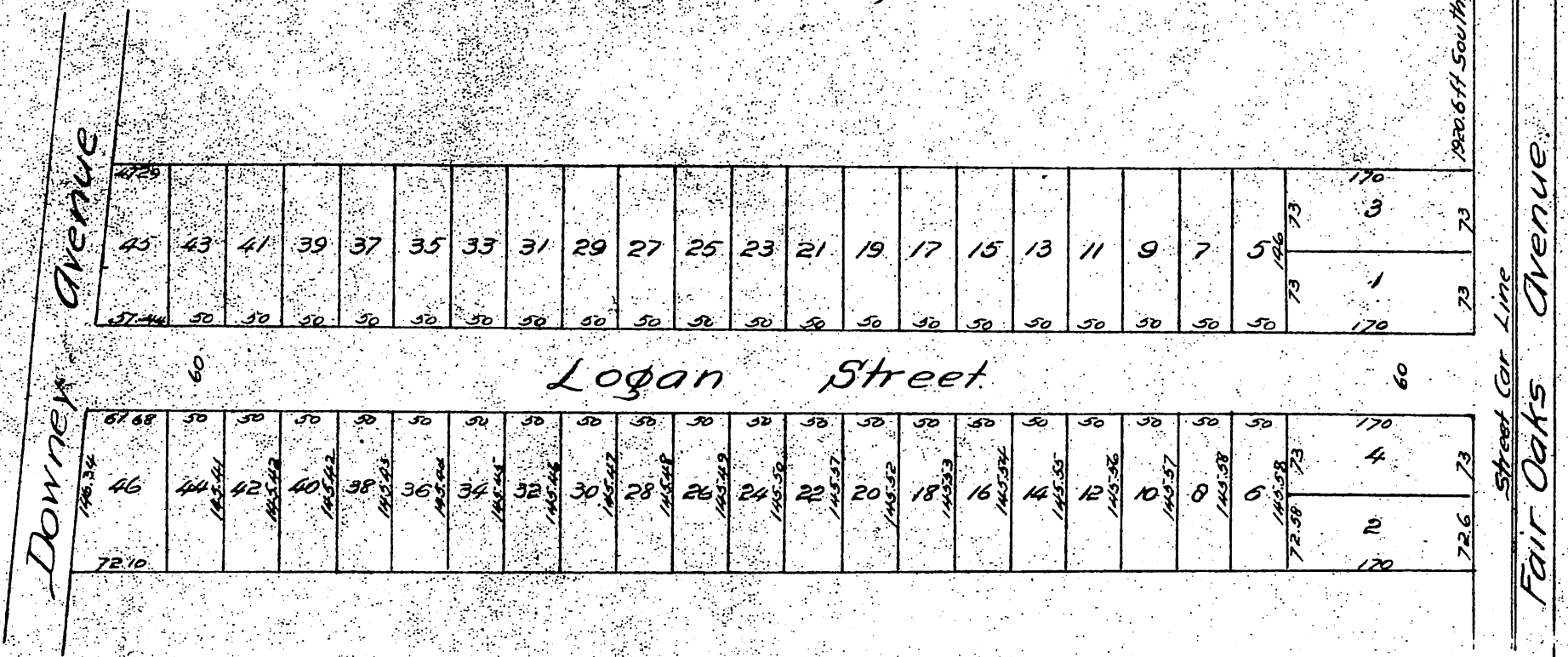




Map
OF THE
Thomas^{1/10} Galbraith Tract
a subdivision of the central portion of Block "D"
of the subdivided lands of J.H. Painter and B.F. Ball
Pasadena, Cal.



A full, true and correct copy of the original
recorded June 9, 1887 at 37 min. past 4 P.M.
at request of D. Galbraith
Frank A. Gibson. County Recorder
By George Ruyter. Deputy.