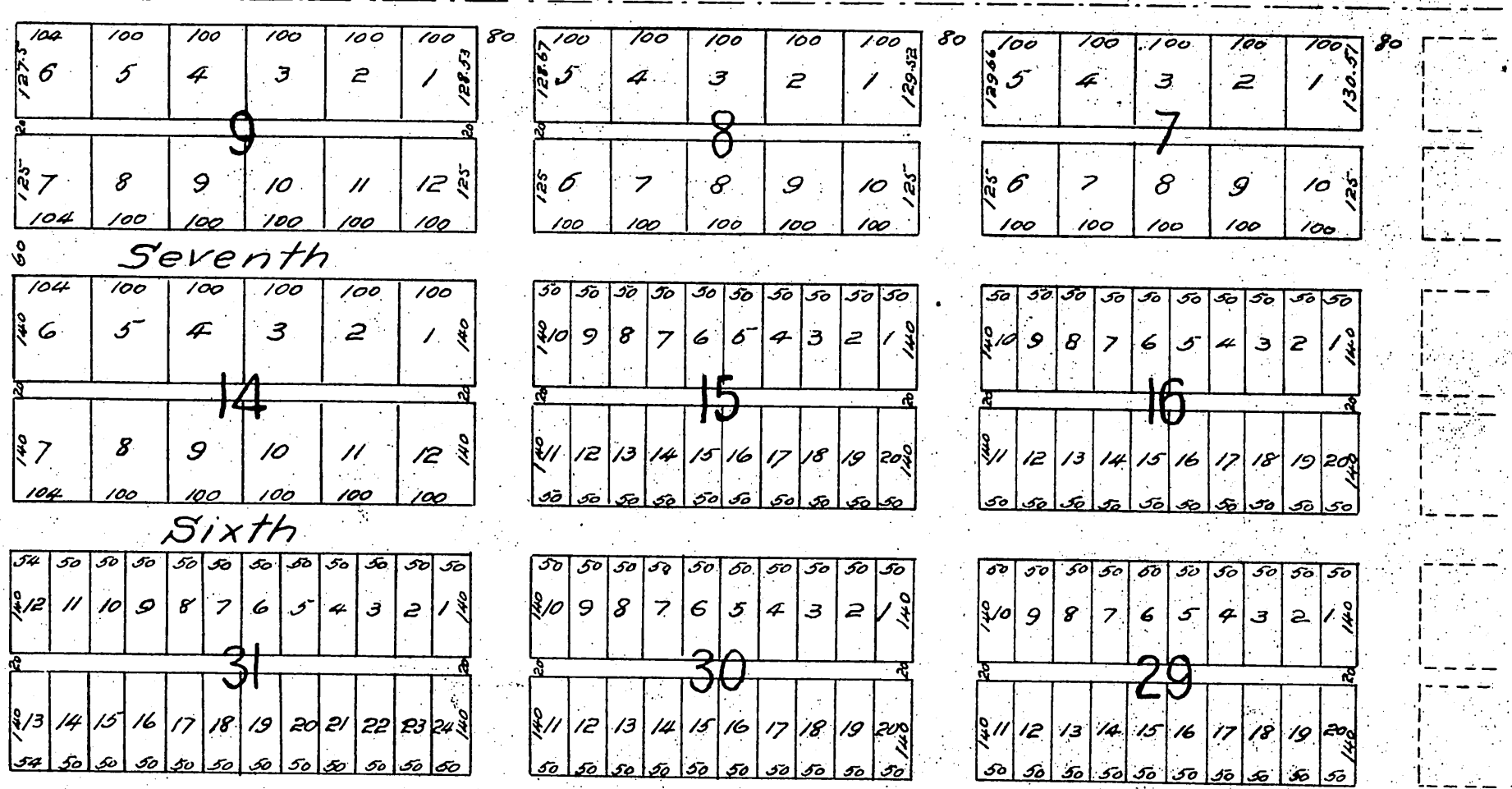
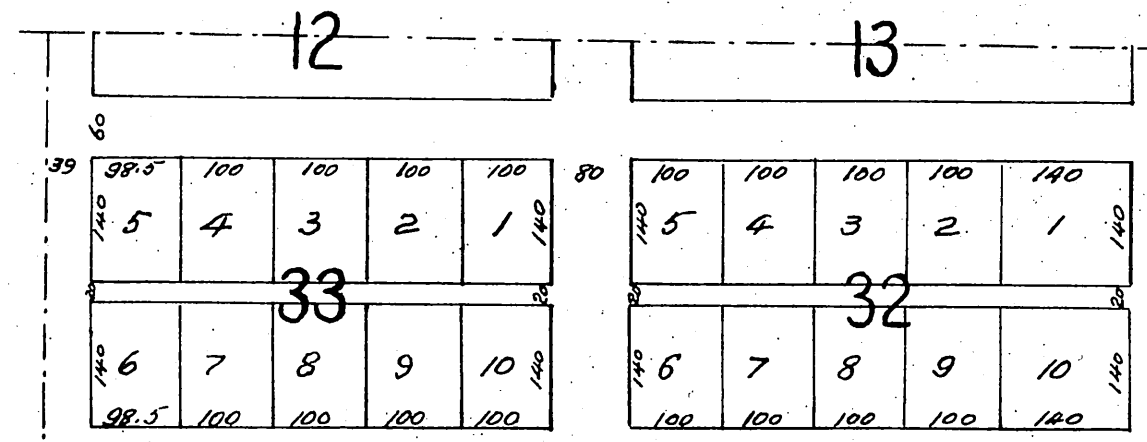


THIS IS TO CERTIFY THAT THE EASTERLY LINE OF THE FRACTIONAL BLOCKS 44, 45, 46, 47, 85, 86, 107, 108 IN THE TOWN OF LORDSBURG AS RECORDED IN BOOK 13 PAGES 9 TO 14 OF LOS ANGELES COUNTY RECORDS IS THE EASTERLY LINE OF THE 10057 ACRE TRACT FORMERLY OWNED AND OCCUPIED BY J. H. GOODHUE IN THE RD. SAN JOSE, ACCORDING TO LOS ANGELES COUNTY RECORDS, AND THAT THE SOUTHEAST CORNER OF LOT 2, BLK 108 TOWN OF LORDSBURG IS THE SOUTHWEST CORNER OF SAID GOODHUE TRACT & BEING ON THE NORTH LINE OF COUNTY ROAD FROM POMONA TO 1740 SPRINGS ALSO THAT THE NORTHEAST CORNER OF FRACTIONAL BLK 44 OF THE TOWN OF LORDSBURG IS THE NORTHEAST CORNER OF SAID GOODHUE TRACT AND ALSO A CORNER TO THE 202 1/2 ACRE TRACT IN RD. SAN JOSE, DERIVED MCH 4/85 BY LUGARDA A DE PALOMARE TO SUSAN L. MILLS & RECORDED IN RECORDS OF LOS ANGELES COUNTY.

JAS. T. TAYLOR, SURVEYOR.

MAP OF LORDSBURG TOWNSITE Los Angeles Co. Cal.

Jas. T. Taylor & Co Surveyors
Scale 200ft = 1 in.



10	9	8	7	6	5	4	3	2	1
11	12	13	14	15	16	17	18	19	20

10	9	8	7	6	5	4	3	2	1
11	12	13	14	15	16	17	18	19	20

10	9	8	7	6	5	4	3	2	1
11	12	13	14	15	16	17	18	19	20

10	9	8	7	6	5	4	3	2	1
11	12	13	14	15	16	17	18	19	20

10	9	8	7	6	5	4	3	2	1
11	12	13	14	15	16	17	18	19	20

10	9	8	7	6	5	4	3	2	1
11	12	13	14	15	16	17	18	19	20

10	9	8	7	6	5	4	3	2	1
11	12	13	14	15	16	17	18	19	20

10	9	8	7	6	5	4	3	2	1
11	12	13	14	15	16	17	18	19	20

10	9	8	7	6	5	4	3	2	1
11	12	13	14	15	16	17	18	19	20

10	9	8	7	6	5	4	3	2	1
11	12	13	14	15	16	17	18	19	20

10	9	8	7	6	5	4	3	2	1
11	12	13	14	15	16	17	18	19	20

10	9	8	7	6	5	4	3	2	1
11	12	13	14	15	16	17	18	19	20

10	9	8	7	6	5	4	3	2	1
11	12	13	14	15	16	17	18	19	20

10	9	8	7	6	5	4	3	2	1
11	12	13	14	15	16	17	18	19	20

10	9	8	7	6	5	4	3	2	1
11	12	13	14	15	16	17	18	19	20

10	9	8	7	6	5	4	3	2	1
11	12	13	14	15	16	17	18	19	20

10	9	8	7	6	5	4	3	2	1
11	12	13	14	15	16	17	18	19	20

10	9	8	7	6	5	4	3	2	1
11	12	13	14	15	16	17	18	19	20

10	9	8	7	6	5	4	3	2	1
11	12	13	14	15	16	17	18	19	20

10	9	8	7	6	5	4	3	2	1
11	12	13	14	15	16	17	18	19	20

10	9	8	7	6	5	4	3	2	1
11	12	13	14	15	16	17	18	19	20

10	9	8	7	6	5	4	3	2	1
11	12	13	14	15	16	17	18	19	20

Fifth

Fourth

Third

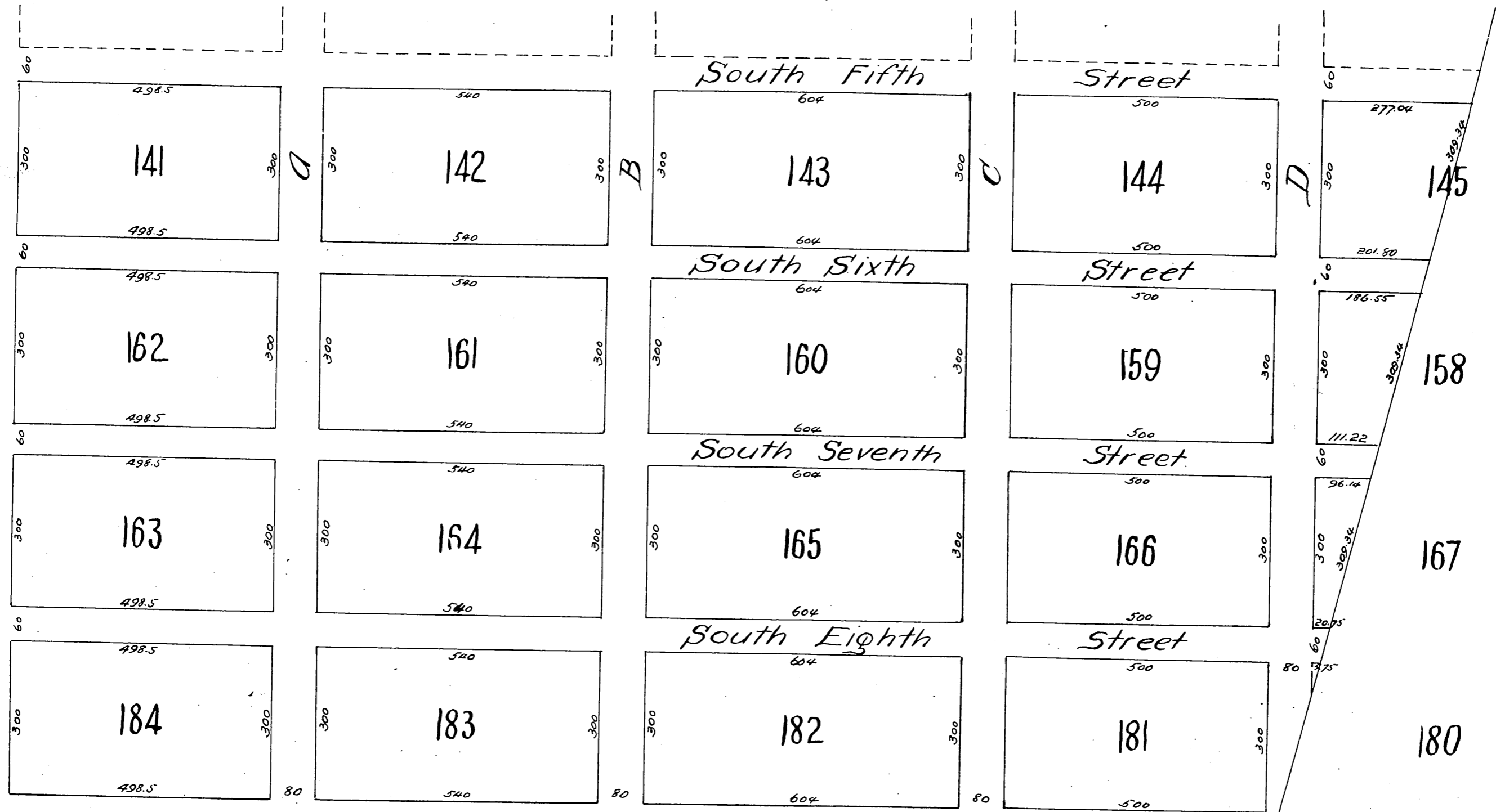
Second

First

San Bernardino & Los Angeles Railway

Palomares

Depot



A full, true and correct copy of the original recorded June 9 1887 at 30 min. past 4 P. M. at request of I. W. Lord
 Frank A. Gibson. County Recorder.
 By George Bugbee Deputy.

