

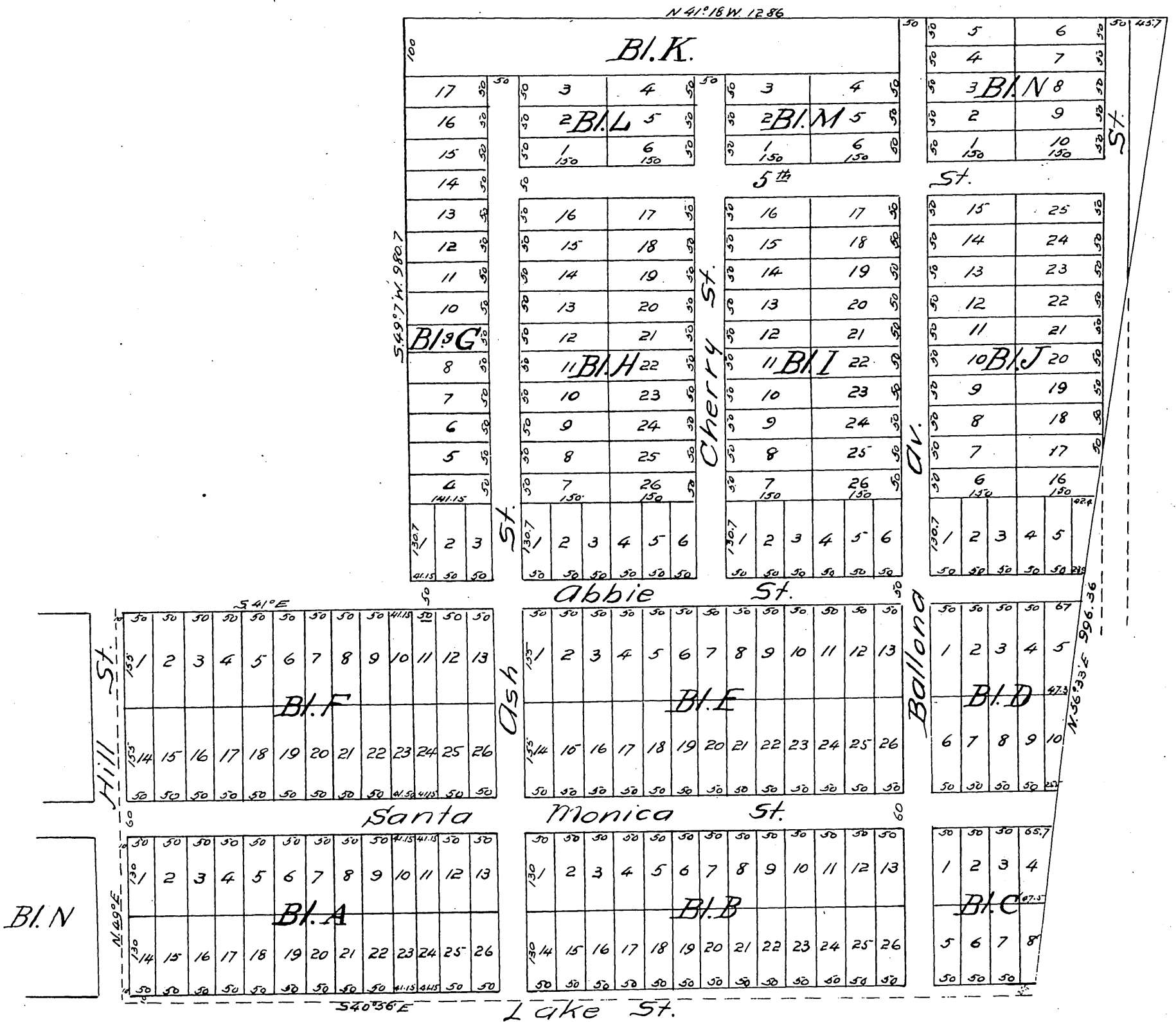
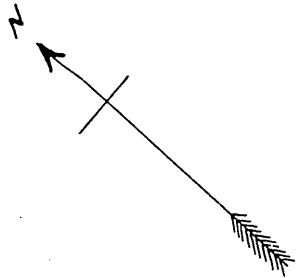
# Map OF THE Santa Fe Tract

Being a Resubdivision of Blocks 12 & 13 and parts of  
Blocks 9, 10 & 11 of the Lucas Tract.

## Santa Monica

Surveyed May 1887.

Scale 200 feet - 1 inch.



A full, true and correct copy of the original  
recorded June 10, 1887 at 23 min. past 11 A.M.  
at request of R. R. Tanner.

Frank C. Gibson County Recorder.  
by George Bigbee Deputy.