



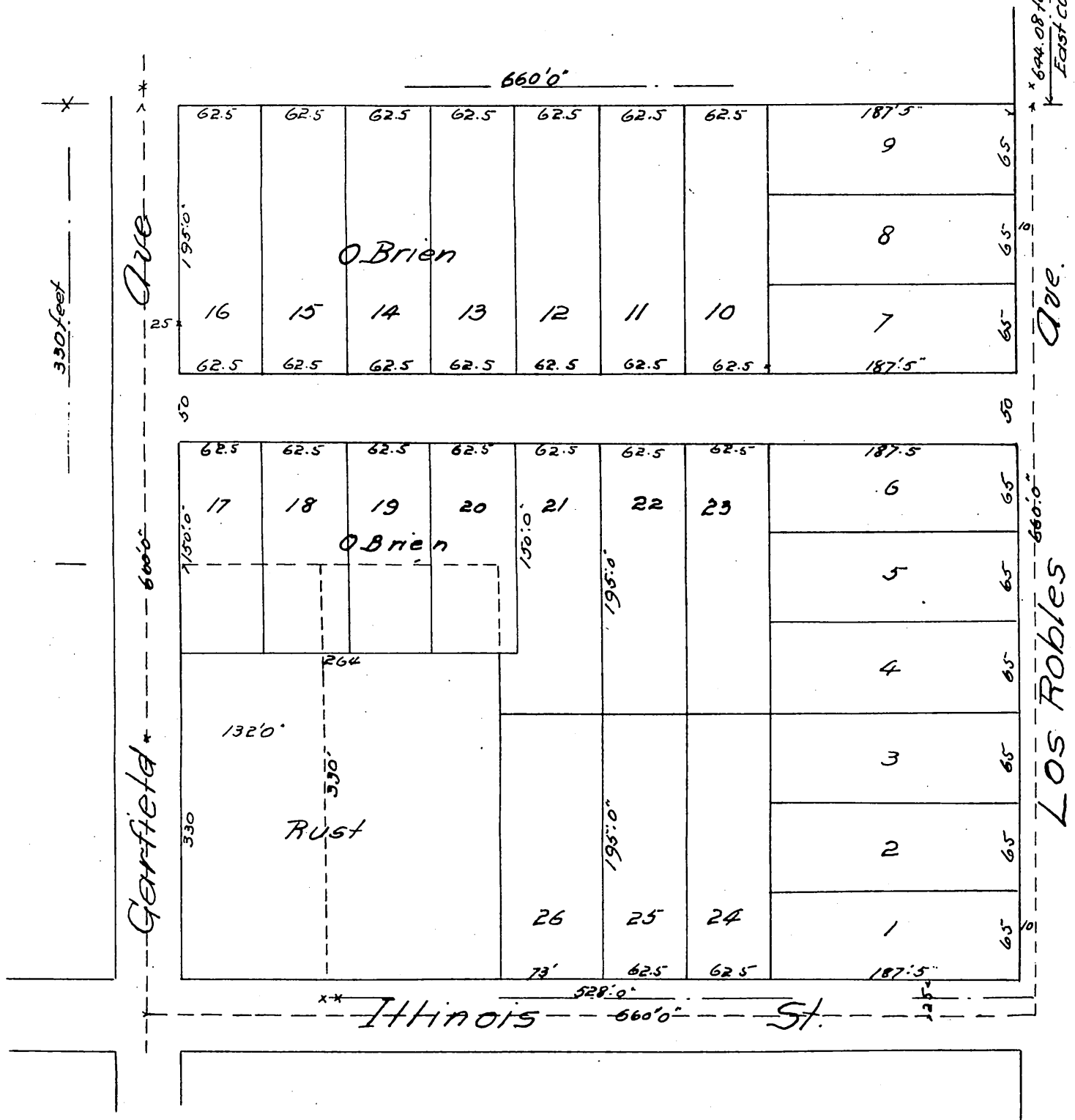
# C.W. Abbotts Subdivision

of part of Block V of the Painter & Ball Addn. to Pasadena

Recorded in Book 4 P. 549 Miss<sup>s</sup> Records.

Los Angeles Coy. Cal.

Simpson & Archer Architects & Civil Engineers.



A full, true and correct copy of the original recorded June 10 1887 at 37 min. past 11 O. M. at request of C.W. Abbott.

Frank A. Gibson County Recorder.  
By George Bugbee Deputy.

Appendix to Map of C. W. Abbotts Subdivision of a part of Block V of Painter and Ball Addition to Pasadena as recorded in Book 18 page 18 of Miscellaneous Records of Los Angeles Co. Cal.

C. W. Abbott being the owner of, and the individual at whose request and direction said subdivision was made, do declare and say that that portion of the map there referred to and marked thereon 644.08 feet South of the North east corner of Block V (V) is erroneous and a mistake and should read 644.08 feet South of the North line of Mountain Street and I do hereby certify the same and execute this instrument for the purpose of correcting said error. And I do further certify that the North east corner of Lot 9 of said subdivision is South of a point on the South line of Mountain Street 624.4 feet West of the North east corner of said Block V of Painter and Ball Addition. In witness whereof I have hereunto set my hand and seal this 8<sup>th</sup> day of Sept. 1888.

C. W. Abbott. (Seal)