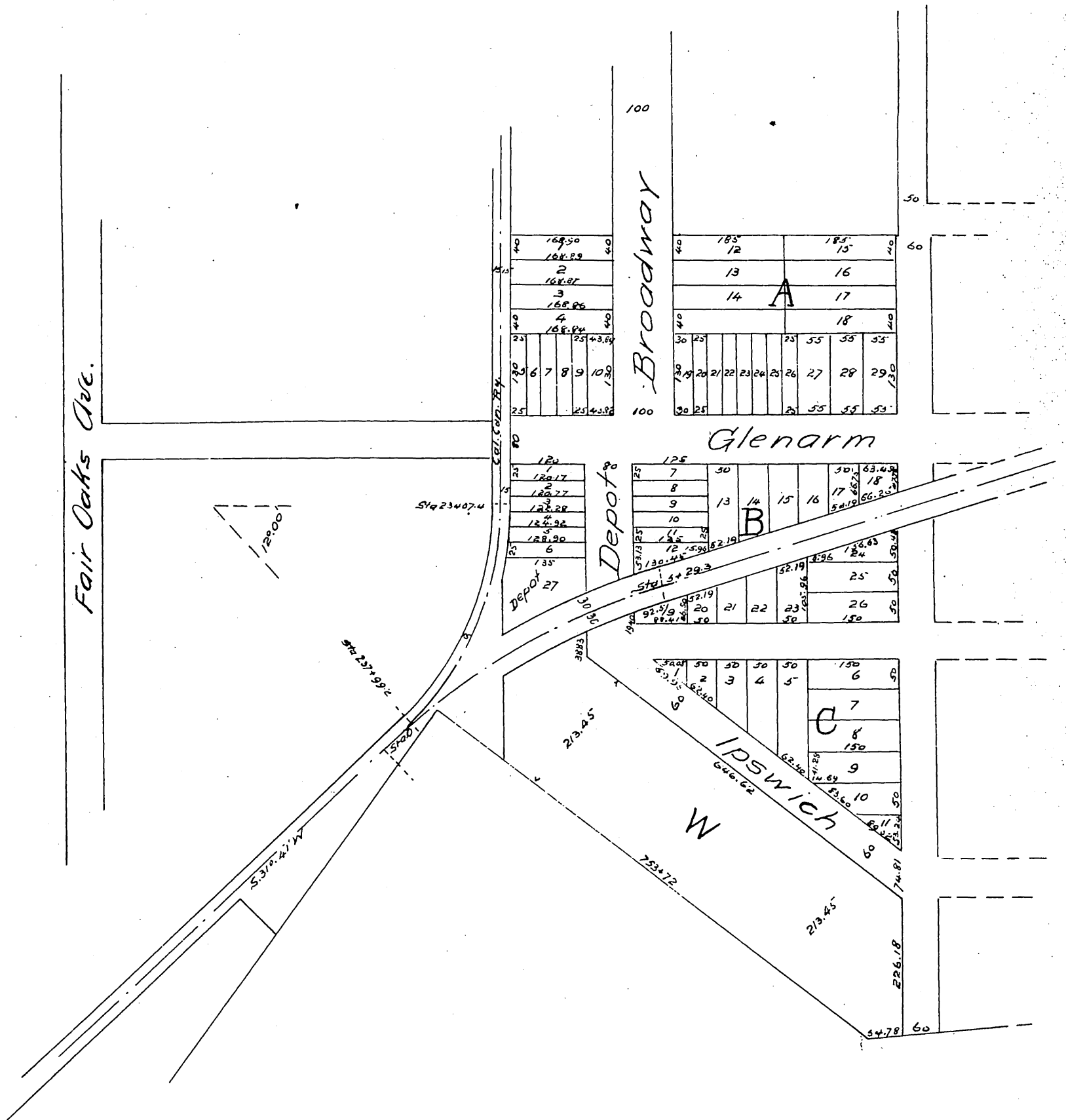
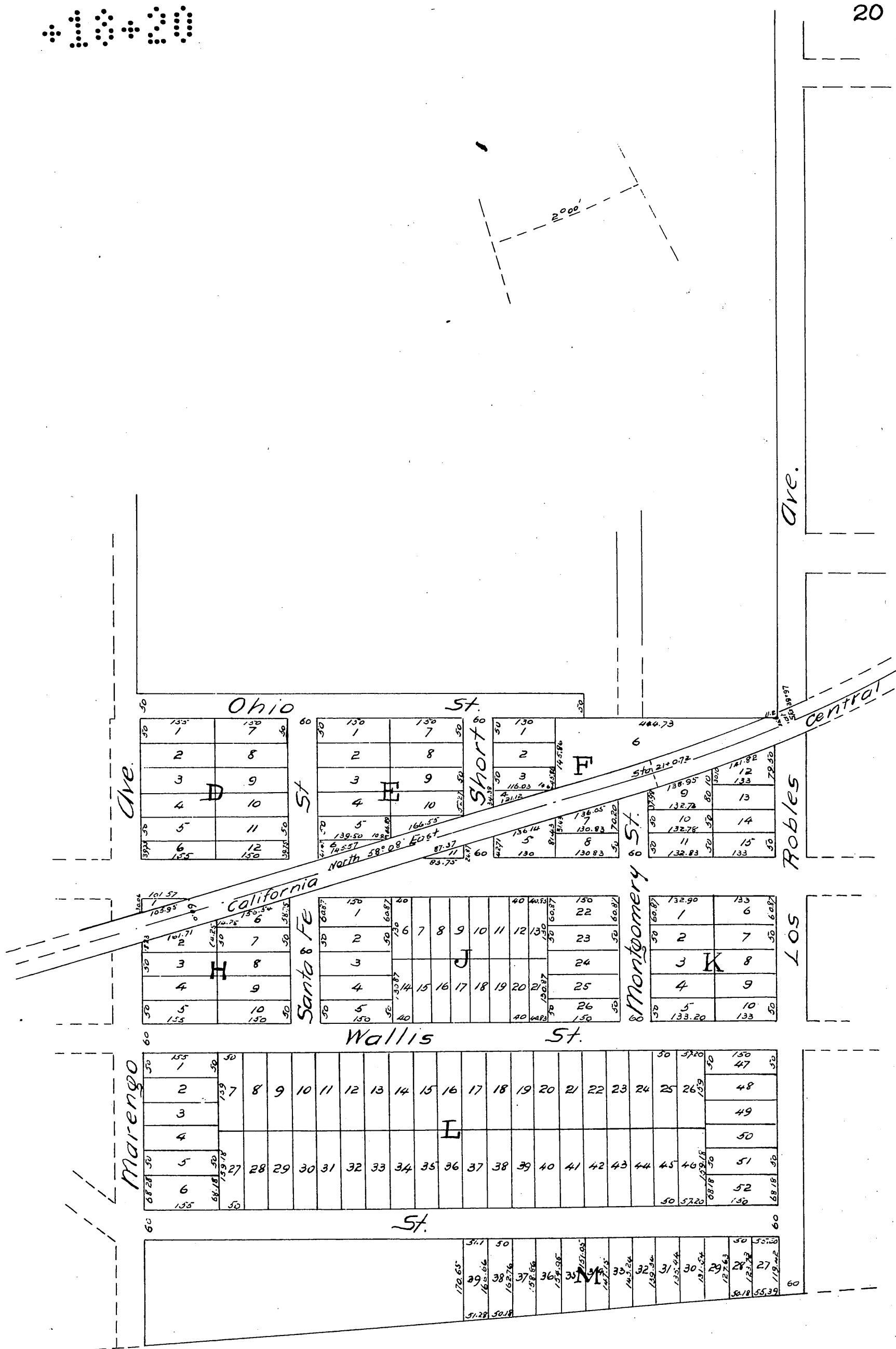
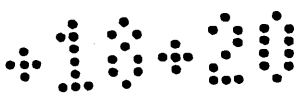
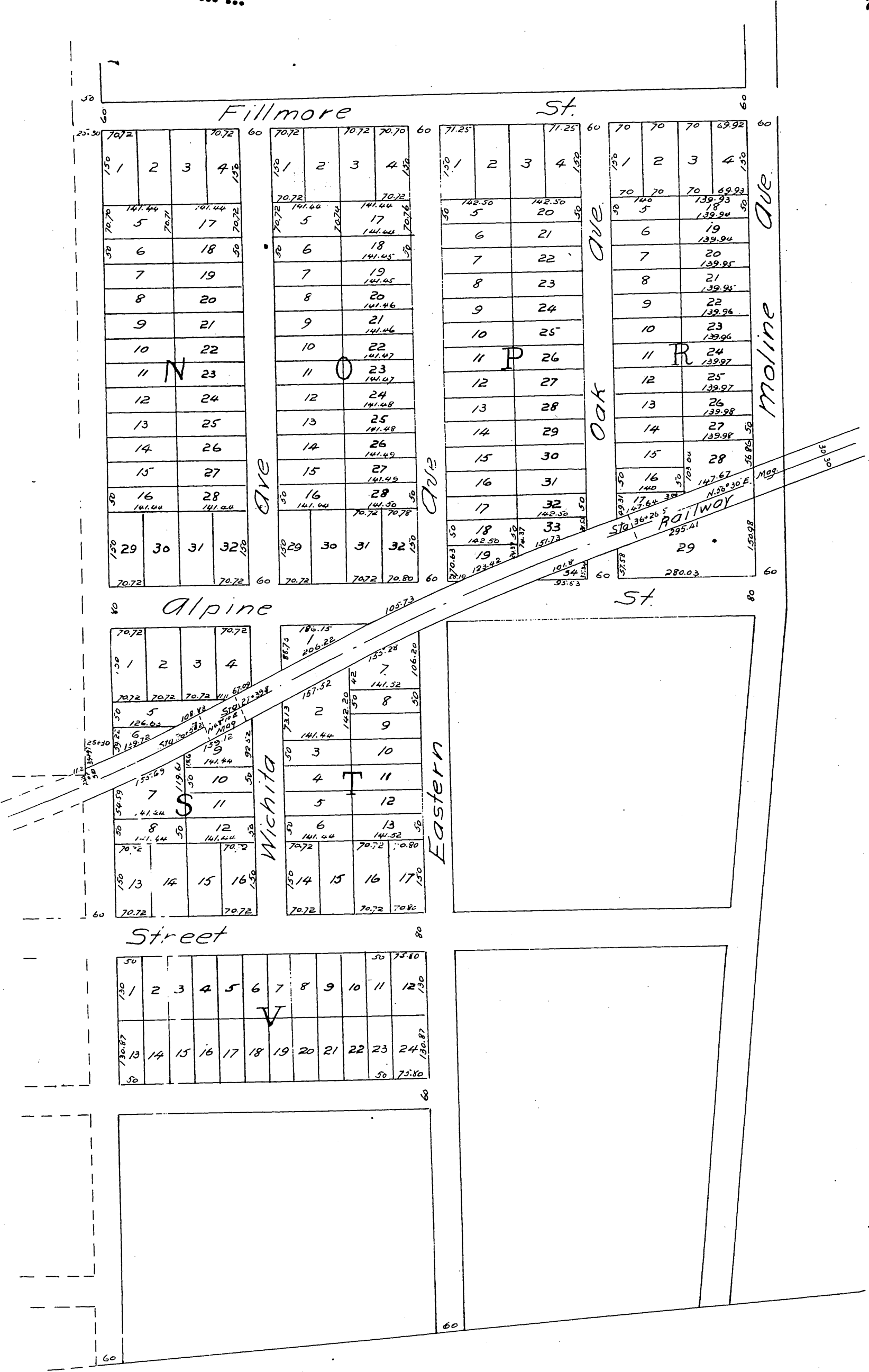


The Raymond Addition TO Pasadena

Being a subdivision of Lots 10 and 11 Block N. Lots 9, 10 and 11 and 7 1/2 of Lot 12 Block O. Lots 5, 6, 8 and 9 and 7 1/2 of Lot 7 Block P Lands of the Lake Vineyard Land and Water Association Rancho San Pasqual
Scale 200ft to 1 inch.







A full, true and correct copy of the original
 recorded June 10, 1887 at 24 min. past 3 P.M.
 at request of M. T. Whitaker.
 Frank A. Gibson, County Recorder.
 By George Bugbee, Deputy.

