

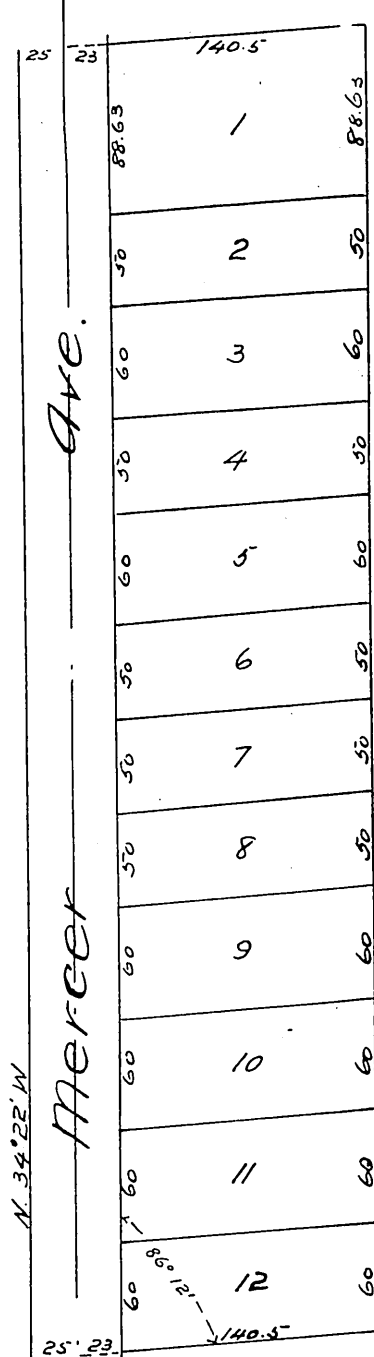
Map OF THE Florence Tract

A subdivision of the Northern portion of
lands by deed to J. H. Fleming recorded in
Book 138 of Deeds Page 101 of Los Angeles Co Records

Pasadena, Cal.

Surveyed 1887 by J. M. Willard, C.E.

Scale 100ft = 1 inch.



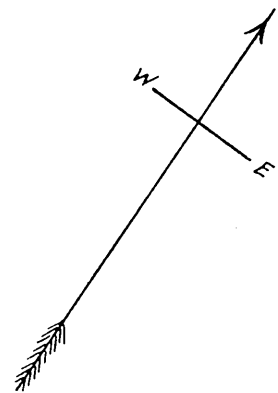
Appendix to "Map of the Florence Tract"

I hereby certify that the distance marked
on said original map on Mountain Avenue
as follows 794 to West line of Fair Oaks Ave
is erroneous and should read "653.5 ft to West
line of Fair Oaks Ave"
Dated December 6th 1887

J. M. Willard, C.E.

A full, true and correct copy of the original
recorded Dec. 6, 1887 at 11³⁰ A.M. at request of
J. M. Willard

Frank A. Gibson, County Recorder.
By George Bugbee, Deputy.



West line of St. 25° 23' 794 to West line of Fair Oaks Ave.

Mountain Ave.

A full, true and correct copy of the original
recorded June 10, 1887 at 59 min. past 4 P.M.
at request of T. P. Lukens

Frank A. Gibson, County Recorder.
By George Bugbee, Deputy.