

Map of T. A. Garey's Park Villa Tract

Being a part of the E 1/4 of N.W. 1/4 of Sec. 12

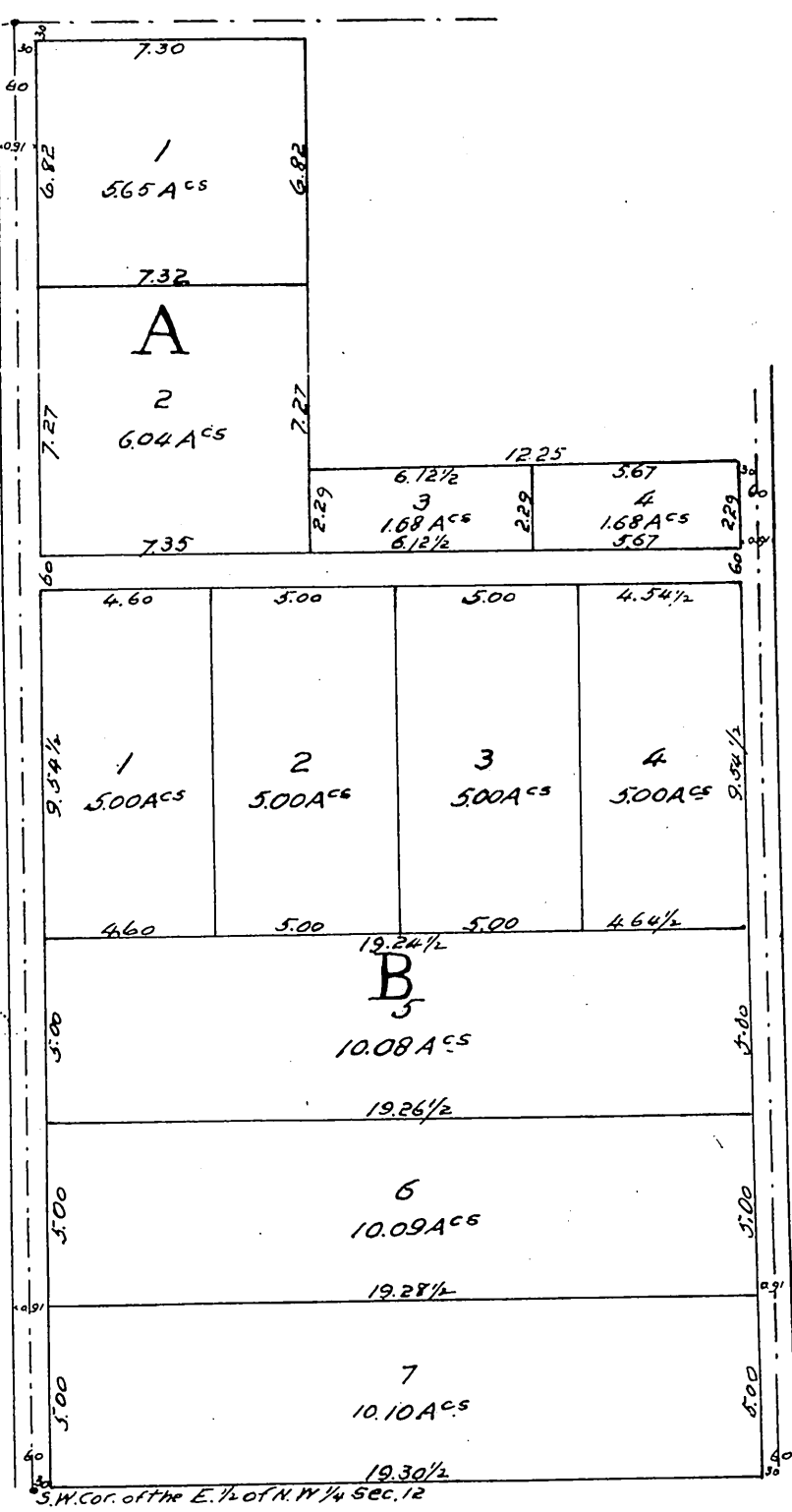
T. 2. S. R. 14. W. S. B. M.

Surveyed Jan 1877 by E. T. Wright.

Scale 3 chs to one inch.

Map made June 1887

Sec. 2 Sec. 1
Sec. 11 Sec. 12
2000. 1/2 to Sec. Cor.
T. 2. S. R. 14. W.



A full, true and correct copy of the original
(reduced to scale of 5 chains to one inch)
recorded June 11, 1887 at 16 min. past 12 M.
at request of Thos Lloyd.

Frank A. Likow, County Recorder.
by George Bugler, Deputy.