

# Map

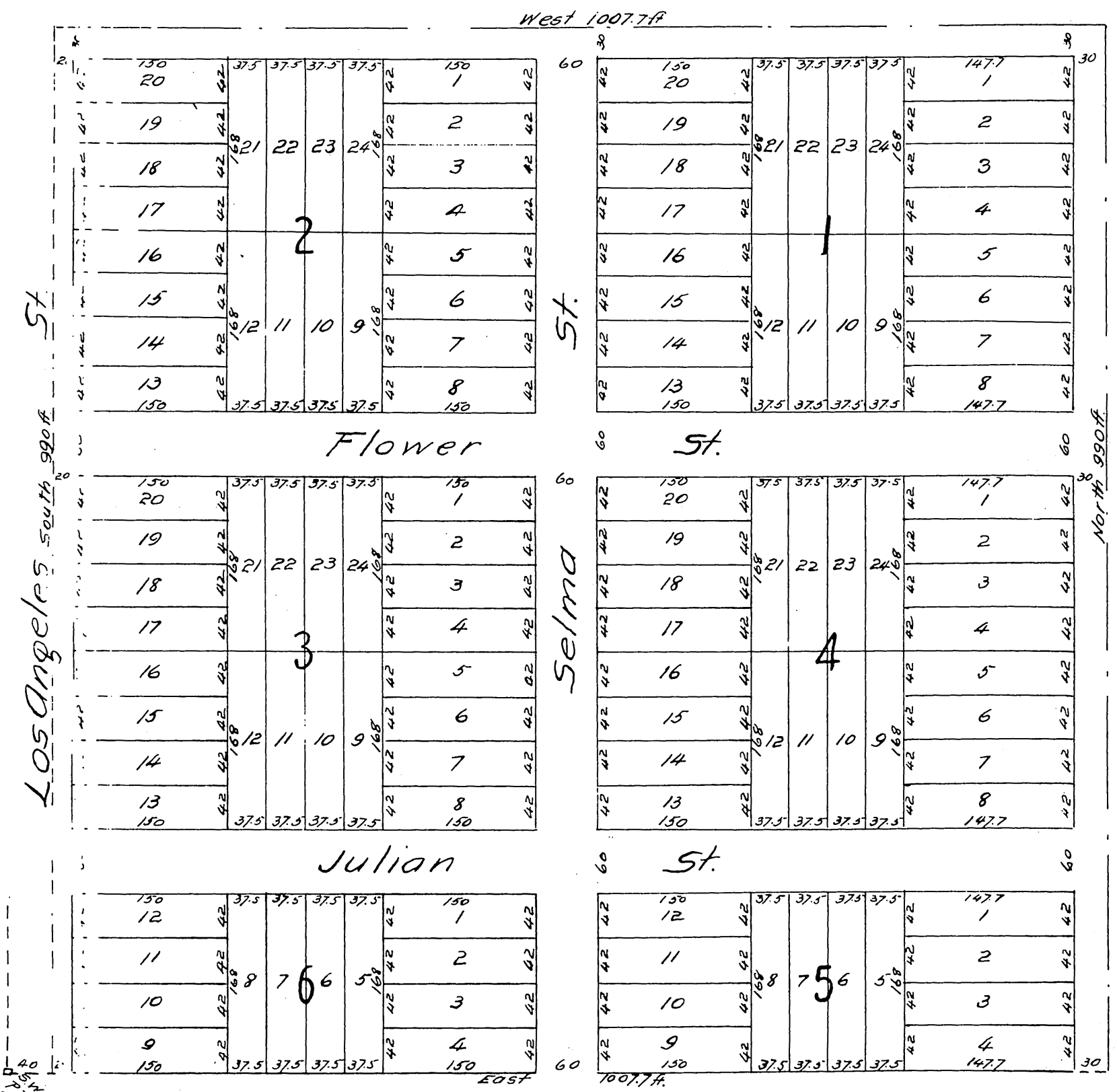
OF THE

## Lewis Tract No. 2

Garvanzo, Los Angeles Co. Cal.

Surveyed May 1887 G.E. Pillsbury C.E.

Scale 50 ft to an inch.



A full, true and correct copy of the original  
 (reduced to the scale of 120 feet to one inch)  
 recorded June 11, 1887 at 35 min. past 1 P.M.  
 at request of Emanuel Lewis.  
 Frank A. Gibson County Recorder.  
 by George Keagle Deputy.

A full, true and correct copy of the original  
 (reduced to the scale of 120 feet to one inch)  
 recorded June 11, 1887 at 35 min. past 1 P.M.  
 at request of Emanuel Lewis.  
 Frank A. Gibson County Recorder.  
 by George Keagle Deputy.