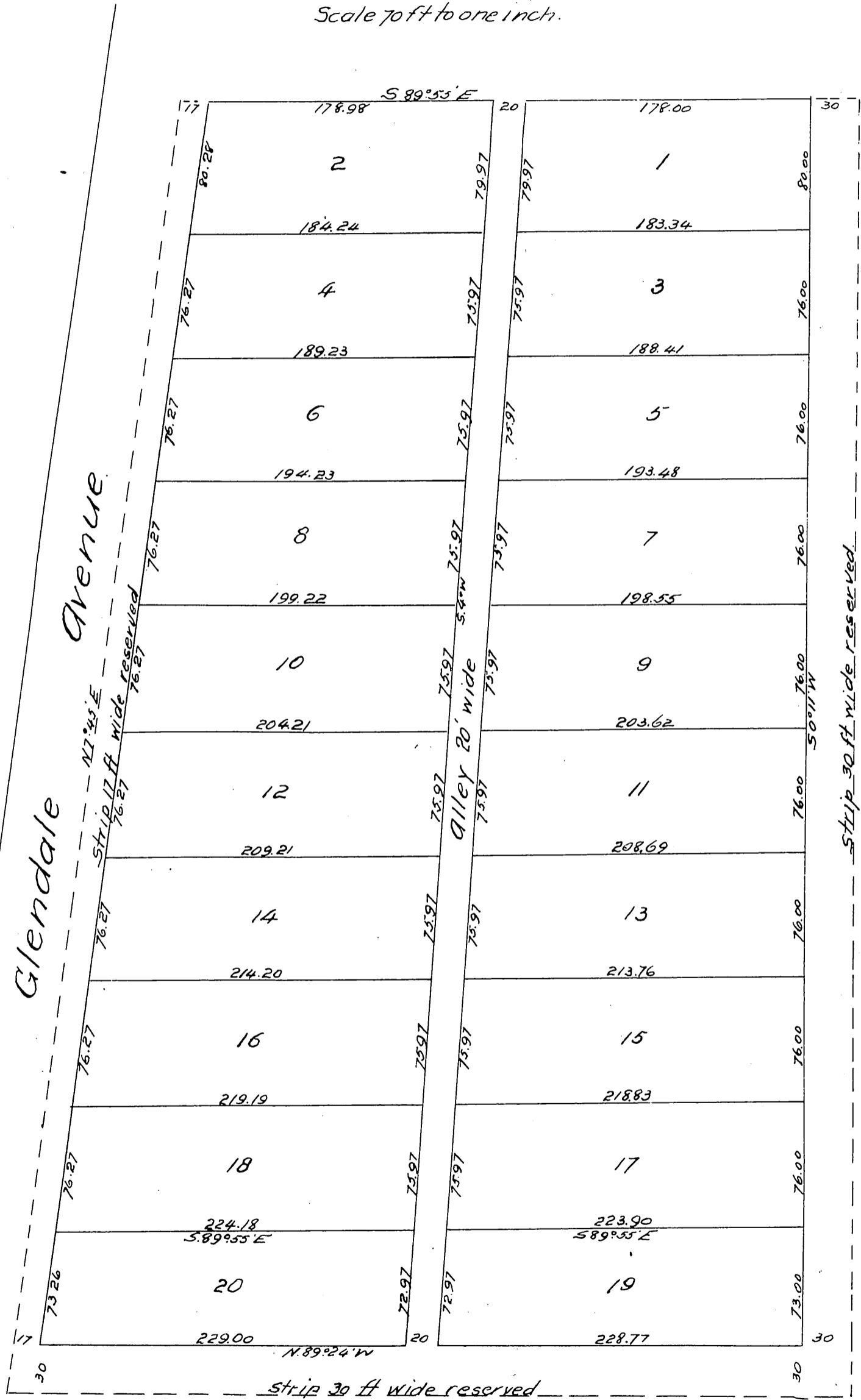


# Map OF E.S. Butterfield's Subdivision

of the Westerly 8<sup>1</sup>/<sub>2</sub> acres of Lot 31  
Watts' Subdivision of the Ro. San Rafael  
Los Angeles Co. Cal.  
Surveyed June 1887 by E.T. Wright  
Scale 70 ft to one inch.



A full, true and correct copy of the original  
recorded June 11, 1887 at 10 min. past 3 P. M.  
at request of E.S. Butterfield.

Frank A. Gibben, County Recorder.  
by George Bugher, Deputy.