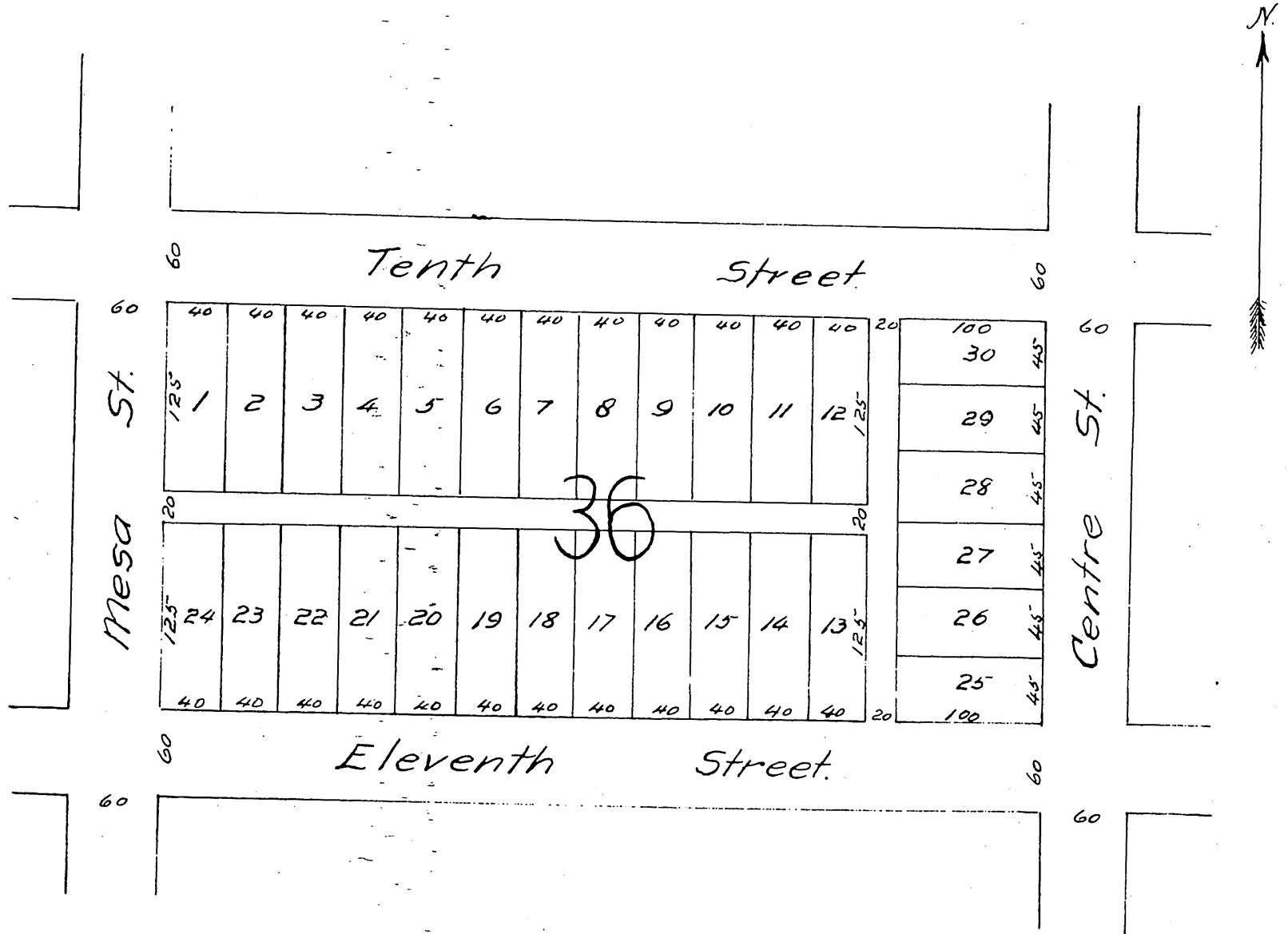


Plat
 OF
 Peck's Subdivision
 of Block 36 in the Town of San Pedro.

Scale 100 ft to one inch

By Chas. T. Healey.



A full, true and correct copy of the original
 recorded June 11, 1887 at 50 min. past 3 P.M.
 at request of Geo. H. Peck.

Frank A. Gibson County Recorder
 by George Tughee Deputy.