

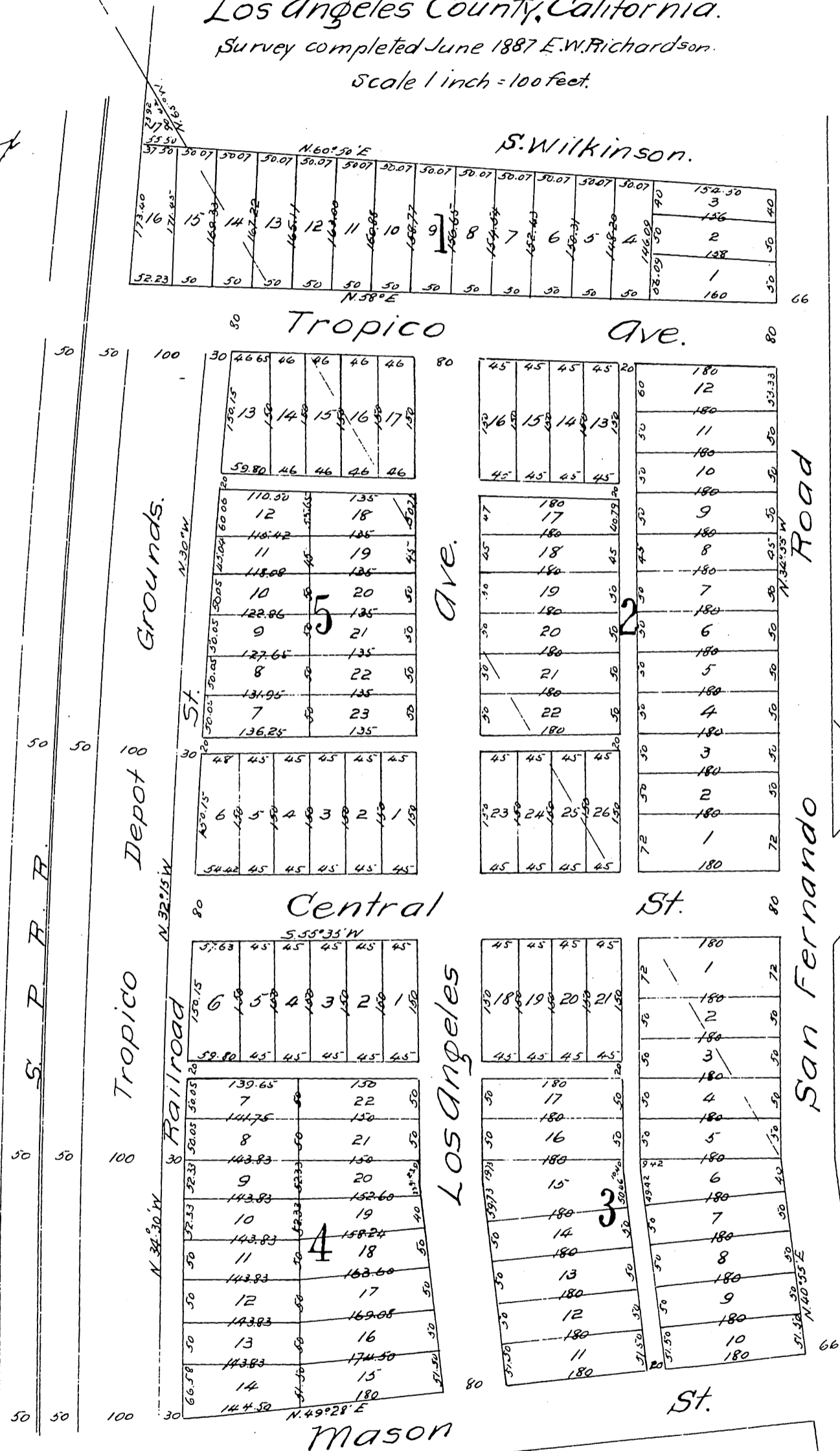
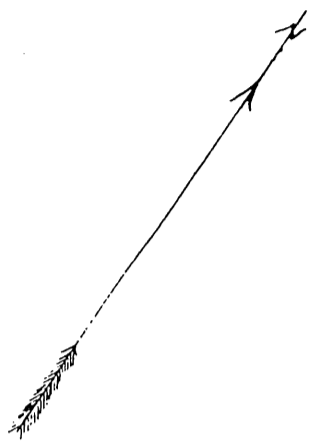
# Map OF

## W. C. B. Richardson's Subdivision

of a part of Rancho Santa Eulalia and the whole of Sub. lot number seven in Watts Subdivision Both being a part of Rancho San Rafael Los Angeles County, California.

Survey completed June 1887 E. W. Richardson.

Scale 1 inch = 100 feet.



H. Jarvis

W. C. Buchanan.

Richardson

A full, true and correct copy of the original (reduced to the scale of 150 feet to one inch) recorded June 13, 1887 at 20 min. past 10 A.M. at request of W. C. B. Richardson

Frank A. Gibson, Co. Recorder. By George Pugh, Deputy.