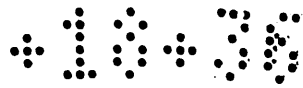


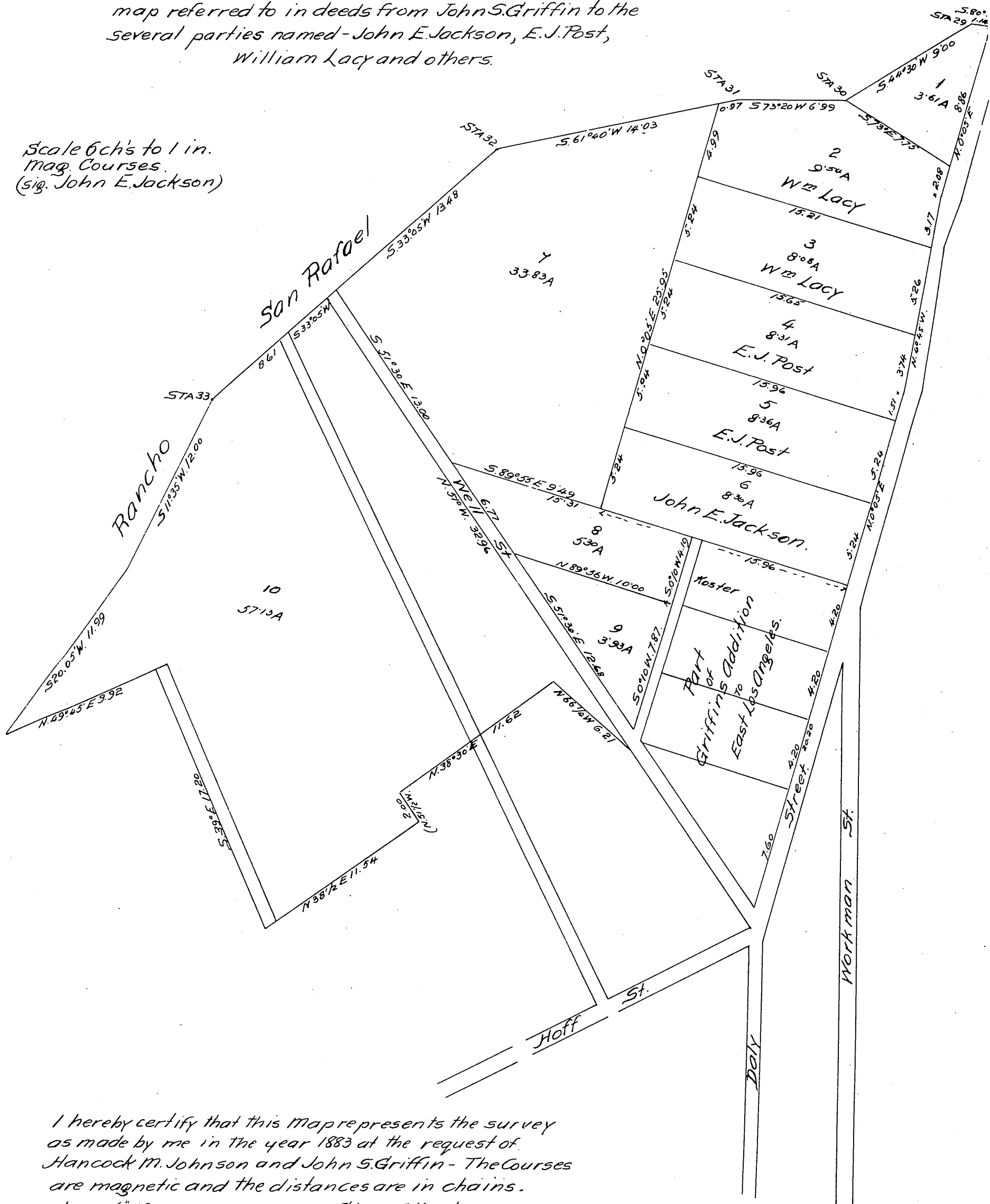
Map OF Griffins Arroyo Seco Tract



or Griffin's Addition to East Los Angeles.

Surveyed by Charles T. Healey in year 1883 and is the map referred to in deeds from John S. Griffin to the several parties named - John E. Jackson, E. J. Post, William Lacy and others.

Scale 6 ch's to 1 in.
Mag. Courses.
(sig. John E. Jackson)



I hereby certify that this map represents the survey as made by me in the year 1883 at the request of Hancock M. Johnson and John S. Griffin - The Courses are magnetic and the distances are in chains.
June 6th 1887. sig. Chas T. Healey.

A full, true and correct copy of the original recorded June 14, 1887 at 6 min. past 11 A.M. at request of Pickit and Kelley.

Frank A. Gibson Co Recorder.
By George Langlee Deputy.