

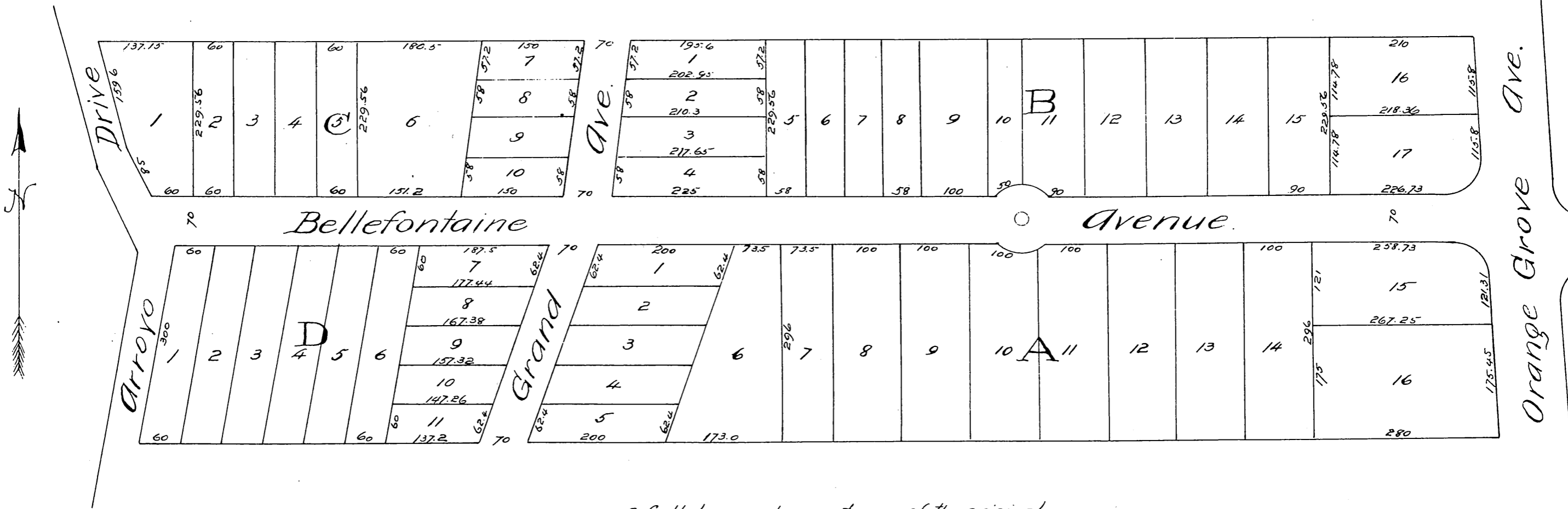
Replat
OF THE
Thomas & Wotkyns Subdivision

of the H. G. Bennett Tract.

Pasadena, Cal.

Surveyed 1887 by J. M. Willard, C.E.

Scale 100 ft to one inch.



*A full, true and correct copy of the original
(reduced to the scale of 150 feet to one inch)
recorded June 14, 1887 at 14 min. past 1 P. M.
at request of Thomas & Wotkyns.
Frank O. Gibson County Recorder.
By George Lougee Deputy.*

