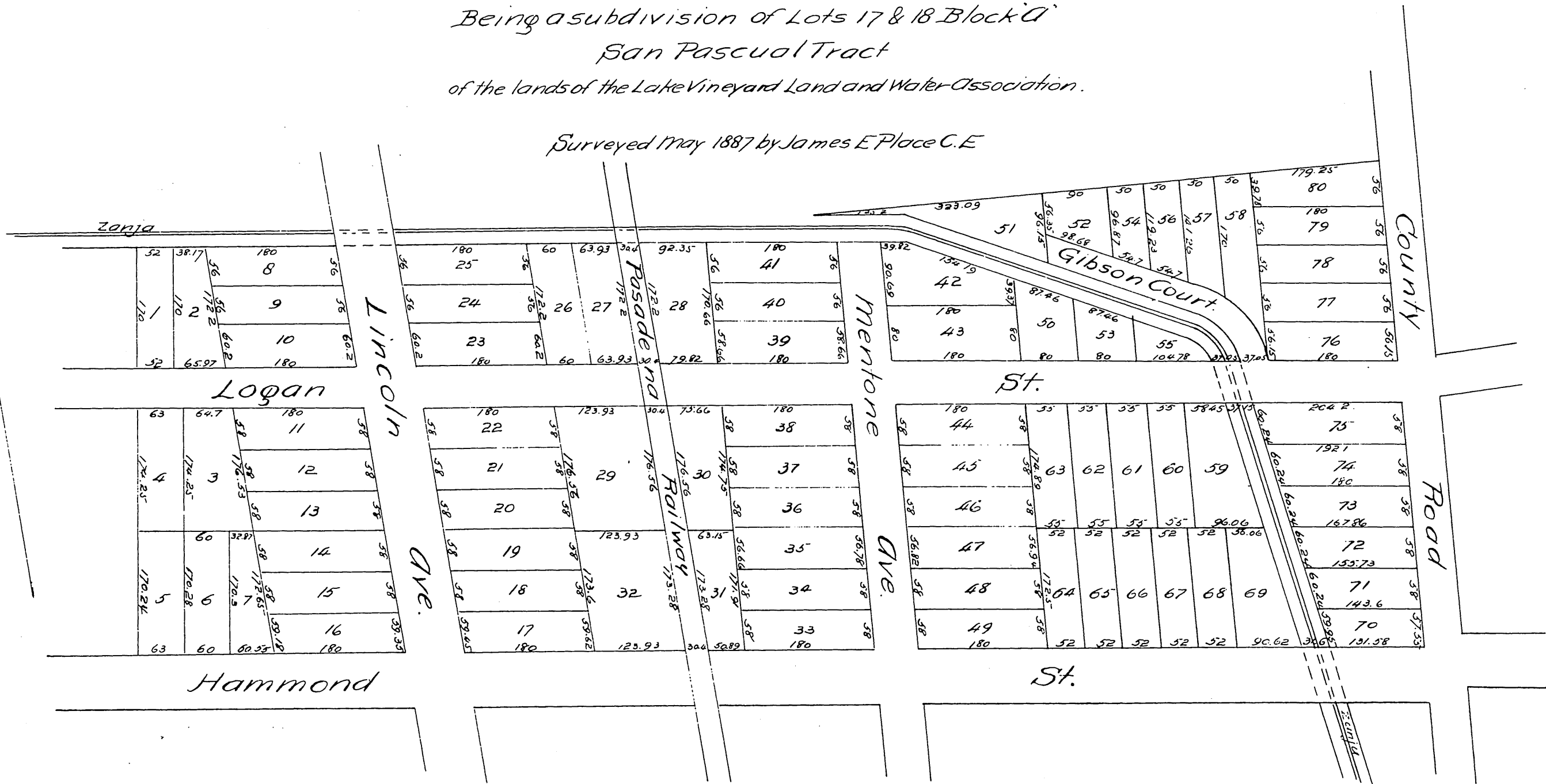


The Clifton Tract

Being a subdivision of Lots 17 & 18 Block 'A'
San Pascual Tract
of the lands of the Lake Vineyard Land and Water Association.

Surveyed May 1887 by James E. Place C.E.



A full, true and correct copy of the original
(reduced to the scale of 150 feet to one inch)
recorded June 14 1887 at 53 min past 2 P.M.
at request of G.S. Gibson.

Frank A. Gibson County Recorder.

By George Kugler, Deputy.

