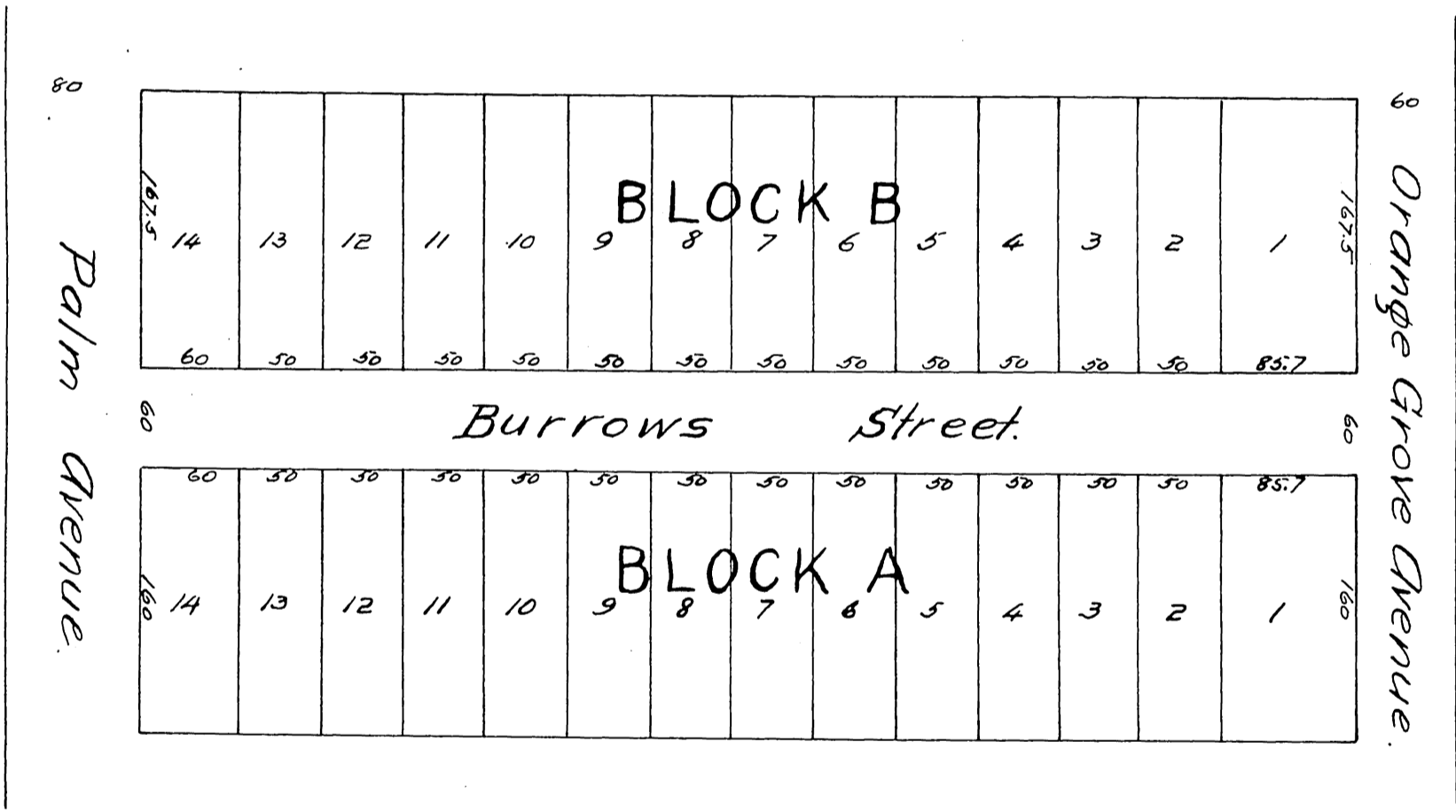


# Map OF A. A. Burrows's Subdivision in South Pasadena.

*Being a subdivision of Lot Two of Calvin Fletchers  
Subdivision in Division H of the San Gabriel Orange  
Grove Association Lands.*



*A full, true and correct copy of the original  
(reduced to the scale of 100 feet to one inch)  
recorded June 15, 1887 at 27 min. past 8 A.M.  
at request of A. A. Burrows.  
Frank A. Gibson, County Recorder.  
By George Bugler, Deputy.*