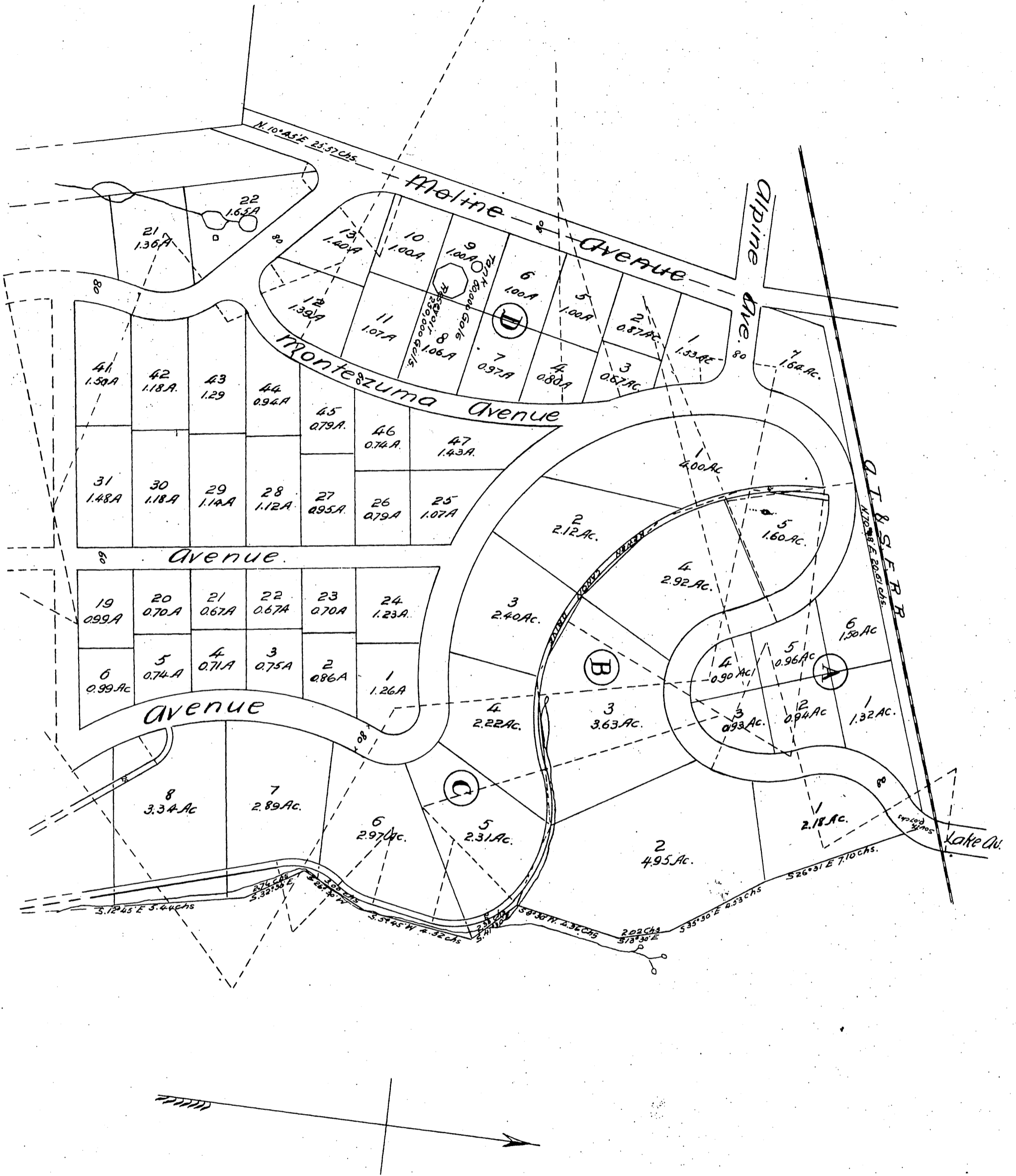
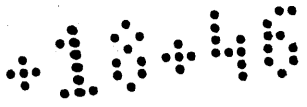


Map  
OF  
Oak Knoll  
Pasadena,  
Los Angeles Co. Cal.

Surveyed Dec. 1886 by Flanagan & Quinton  
Scale 150 ft = 1 inch.





A full, true and correct copy of the original  
 (reduced to the scale of 250 feet to one inch)  
 recorded June 15, 1887 at 6 min. past 3 P. M.  
 at request of Stern, Cahn and Loeb.

Frank A. Gibson County Recorder.  
 By George Langbe. Deputy.