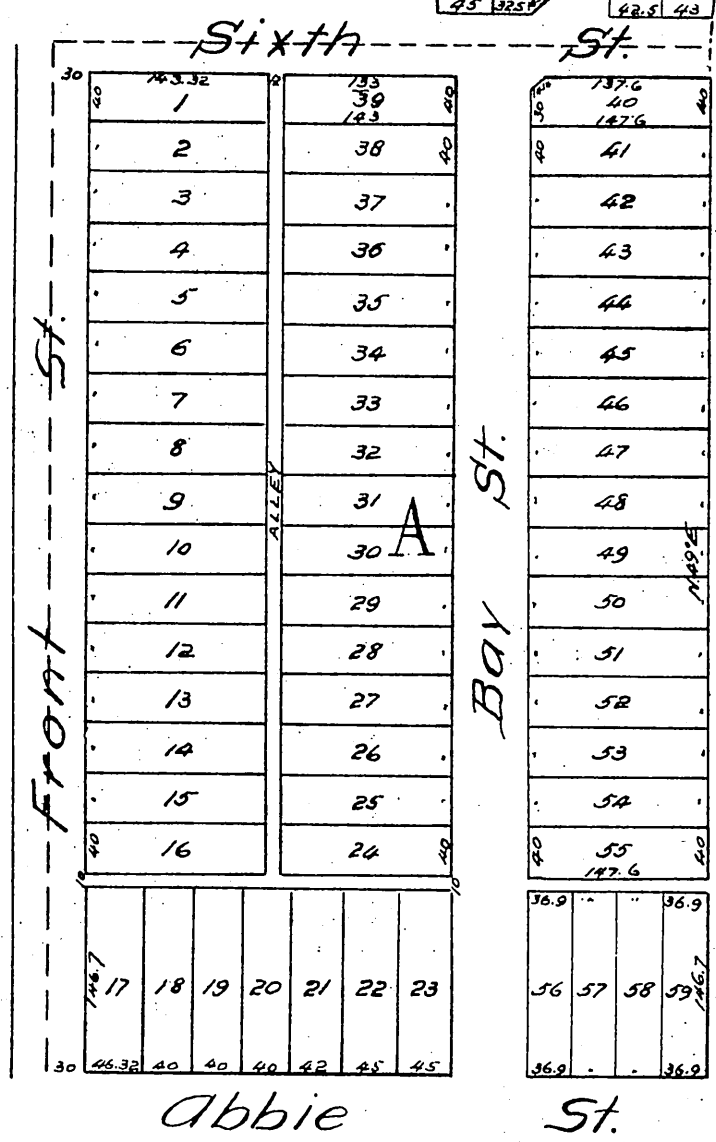
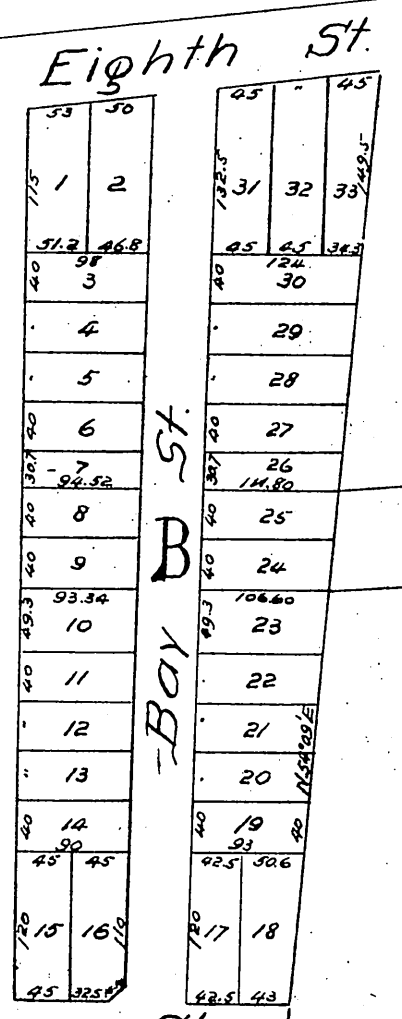


PLAT OF THE Wave Crest Tract.

Being a subdivision of Lot 20 and
part of Lot 21 Lucas Tract.

Santa Monica
L. A. Co. Cal.

As surveyed in May 1887 by E. G. Jones, C. E.
Scale 100 feet to 1 inch.



A full, true and correct copy of the original
(reduced to the scale of 150 feet to one inch)
recorded June 17, 1887 at 20 min. past 1 P.M.
at request of H. G. Wilshire.

Frank A. Gibson County Recorder
By George Bugbee Deputy