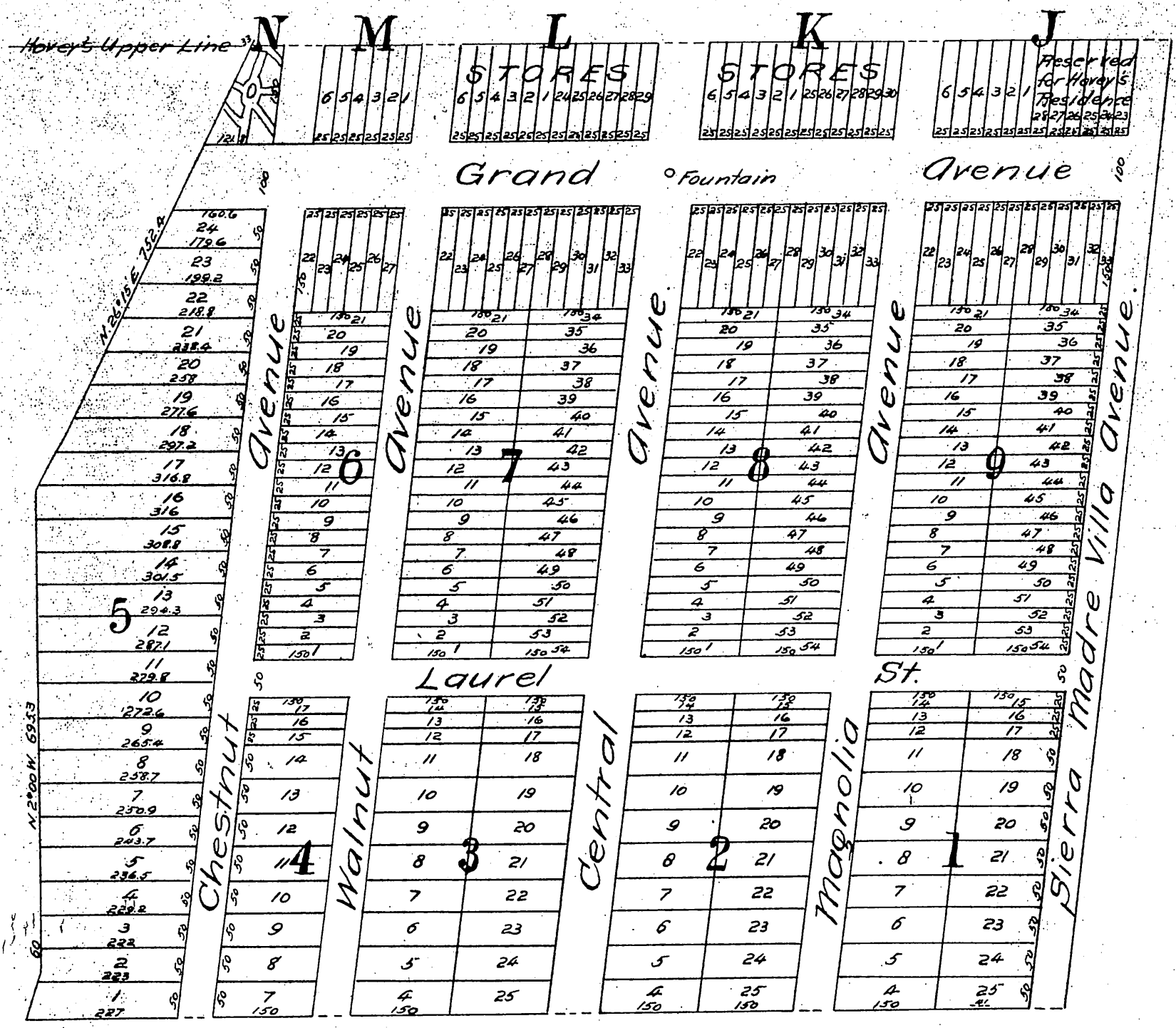


Map OF Huntington Sierra Madre Villa Tract. Santa Anita Rancho. Los Angeles Co. Cal.

Being a subdivision of the North $50\frac{52}{100}$ acres of the $102\frac{65}{100}$ acre tract conveyed by Wm. Cogswell to Samuel D. Hovey by deed dated April 11, 1883 and recorded in book 103 of deeds, page 386 in Recorders Office of said Los Angeles County
H. J. Stevenson. Surveyor 1887.
Scale 200 feet to one inch.



A full, true and correct copy of the original recorded June 18, 1887 at 29 min. past 11 A.M. at request of S. D. Hovey
Frank A. Gibson. County Recorder.
By George Hughes. Deputy.

Note by Recorder.
That shown in blue on this map was in pencil on the original.