

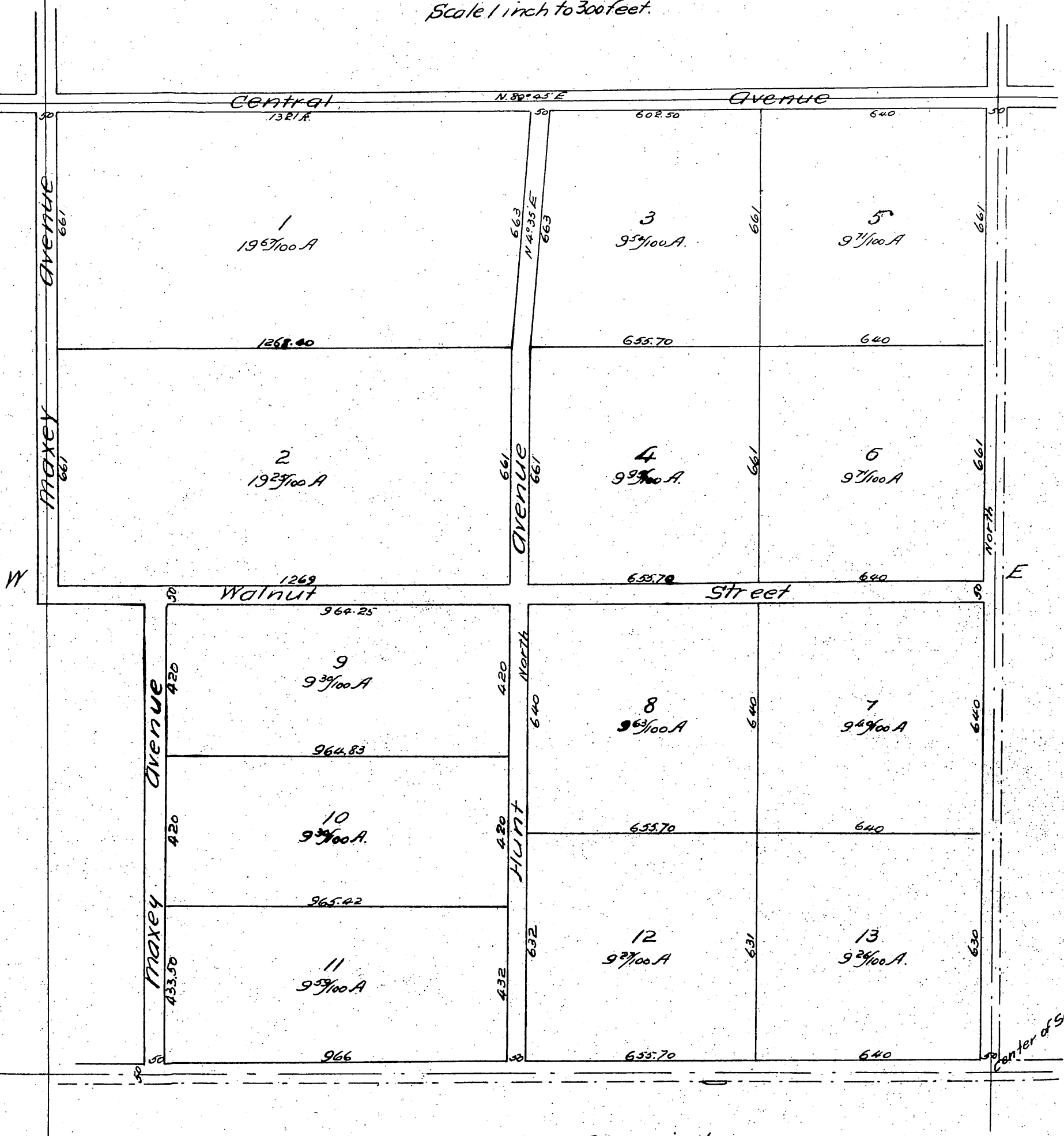


# Map OF

## Barclay & Hunt's

Subdivision of 150 acres in the N.W. quarter of  
Sec 10 Township 1 South, Range 10 West.  
San Bernardino Base and Meridian.

Surveyed at request of F. H. Barclay.  
June 15 and 16, 1887 by McClure Bros.  
Scale 1 inch to 300 feet.



A full, true and correct copy of the original  
recorded June 22, 1887 at 16 min. past 4 P.M.  
at request of F. H. Barclay.

Frank O. Gibson, County Recorder.  
By George Bugher, Deputy.