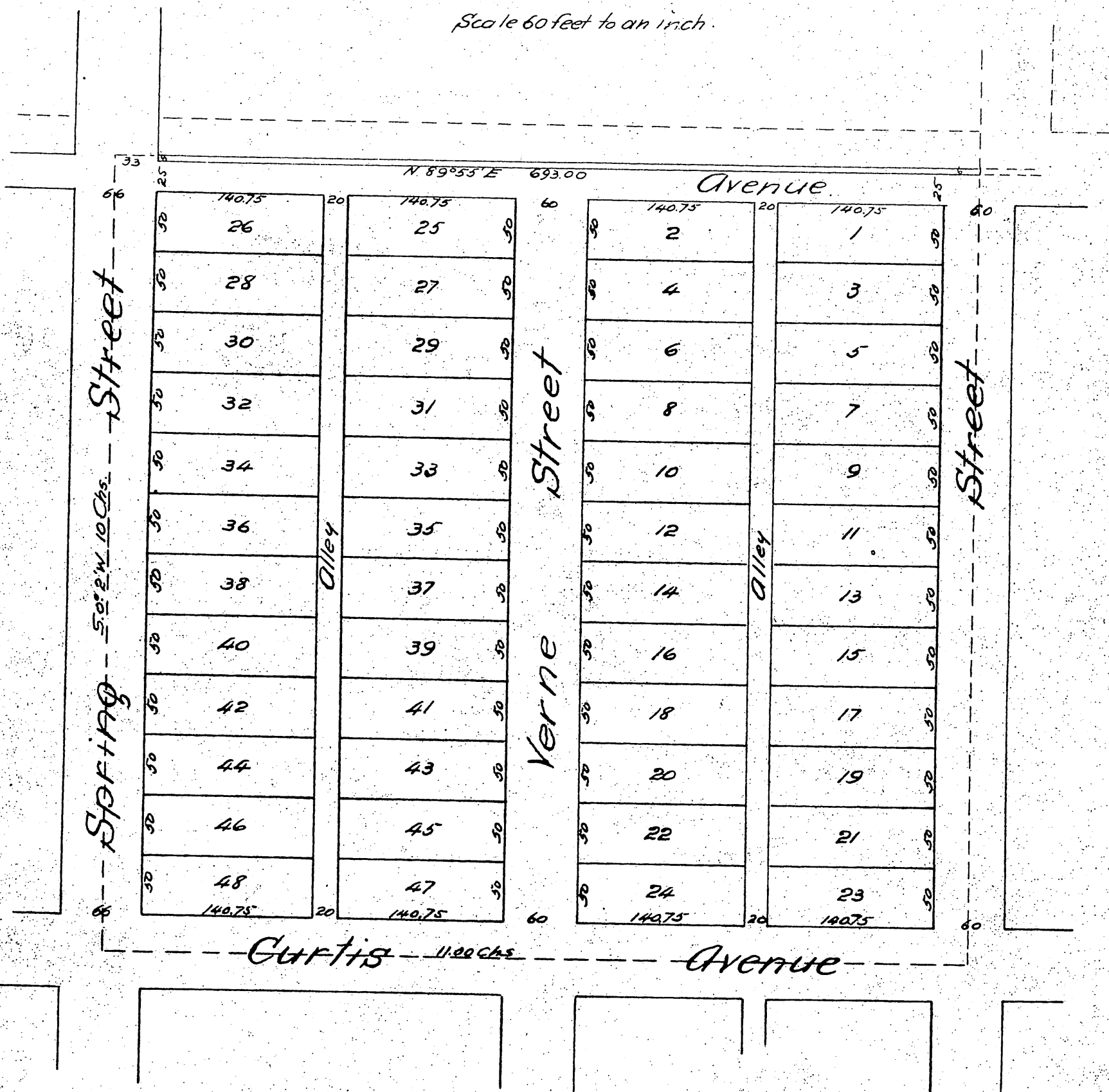


MR [dots]

Map OF Blanchard's Subdivision

of the N.W. 1/4 of the N.E. 1/4 of the S.E. 1/4 of Section 6 and the
East 1 acre of the N.E. 1/4 of the N.W. 1/4 of the S.E. 1/4 of said
Section 6 in Township 3 South Range 11 West S.B.M.

As surveyed by me in May 1887 in Pto. Santa Gertrudes
J. O. Bernal Sur. & C.E.
Scale 60 feet to an inch.



A full, true and correct copy of the original
(reduced to the scale of 100 feet to one inch)
recorded June 23, 1887 at 58 min. past 10 A.M.
at request of S. Blanchard.

Frank O. Gibson, County Recorder.
By George Bugbes, Deputy.