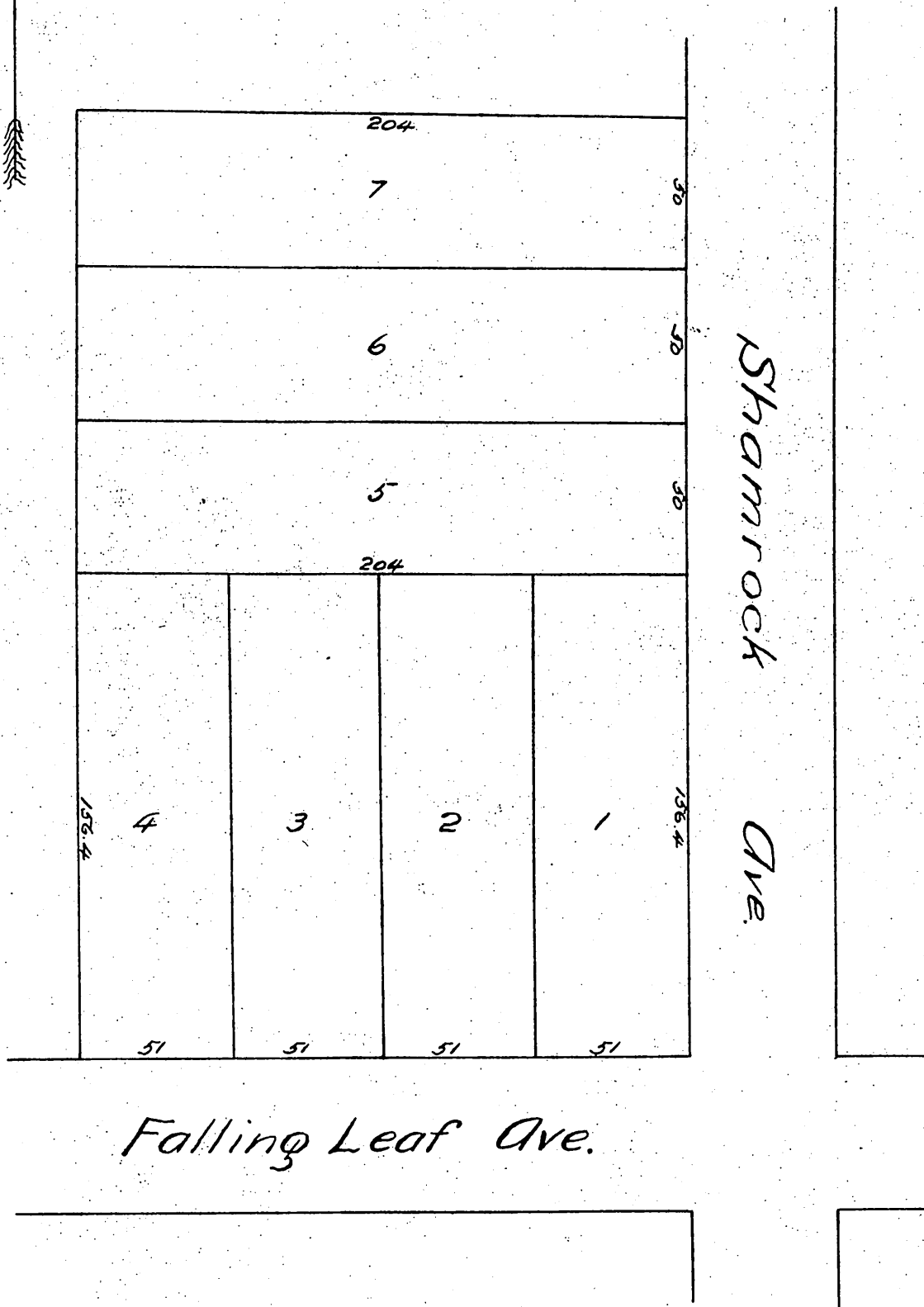


Map
 OF
 T. J. Martin's Subdivision
 of Lots 5 & 6 of Stevenson's Subdivision
 of Lot M Blk 17 Addition No 2 to
 Monrovia L.A. Co. Cal.

Surveyed by J.S. McDonald C.E. Monrovia
 Scale 1 inch = 50 ft.



A full, true and correct copy of the original
 recorded June 24, 1887 at 37 min. past 2 P.M.
 at request of T.J. Martin.

Frank O. Gibson. County Recorder.
 By George Touger. Deputy.