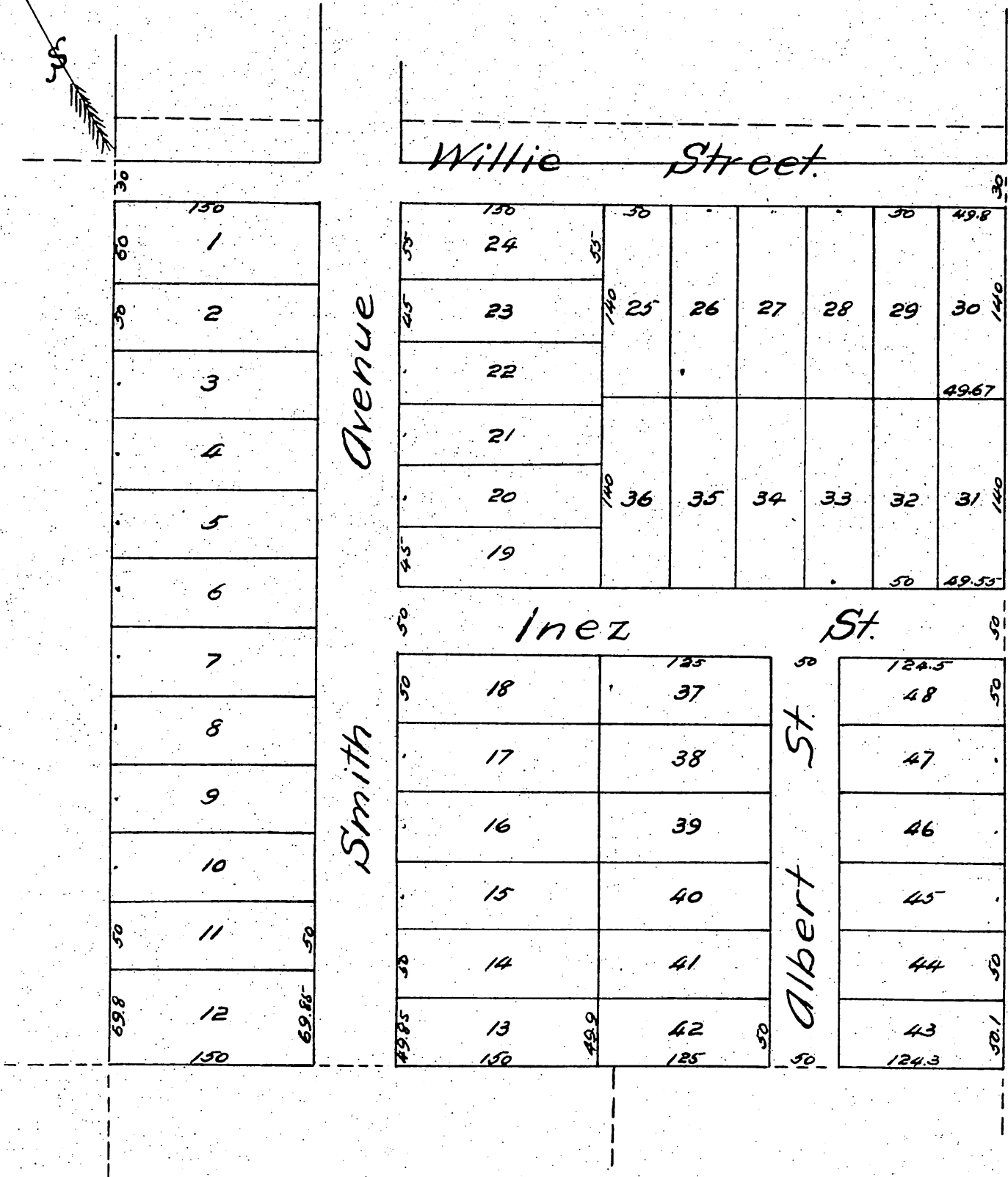
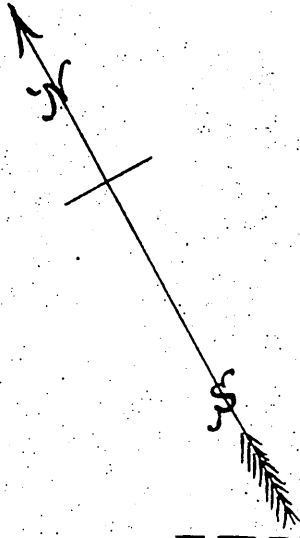




Map OF R. S. Moore's Subdivision

of Lot 1 of C. J. Fox's Subdivision in Lot 8, Block 72.
Hancock Survey Los Angeles, California.

A. R. Street, Sur't April 1887
Scale 100 ft per inch.



A full, true and correct copy of the original
recorded June 25, 1887 at 15 min. past 9 A.M.
at request of E.S. Field.

Frank A. Gibson County Recorder.
By George Langley, Deputy.