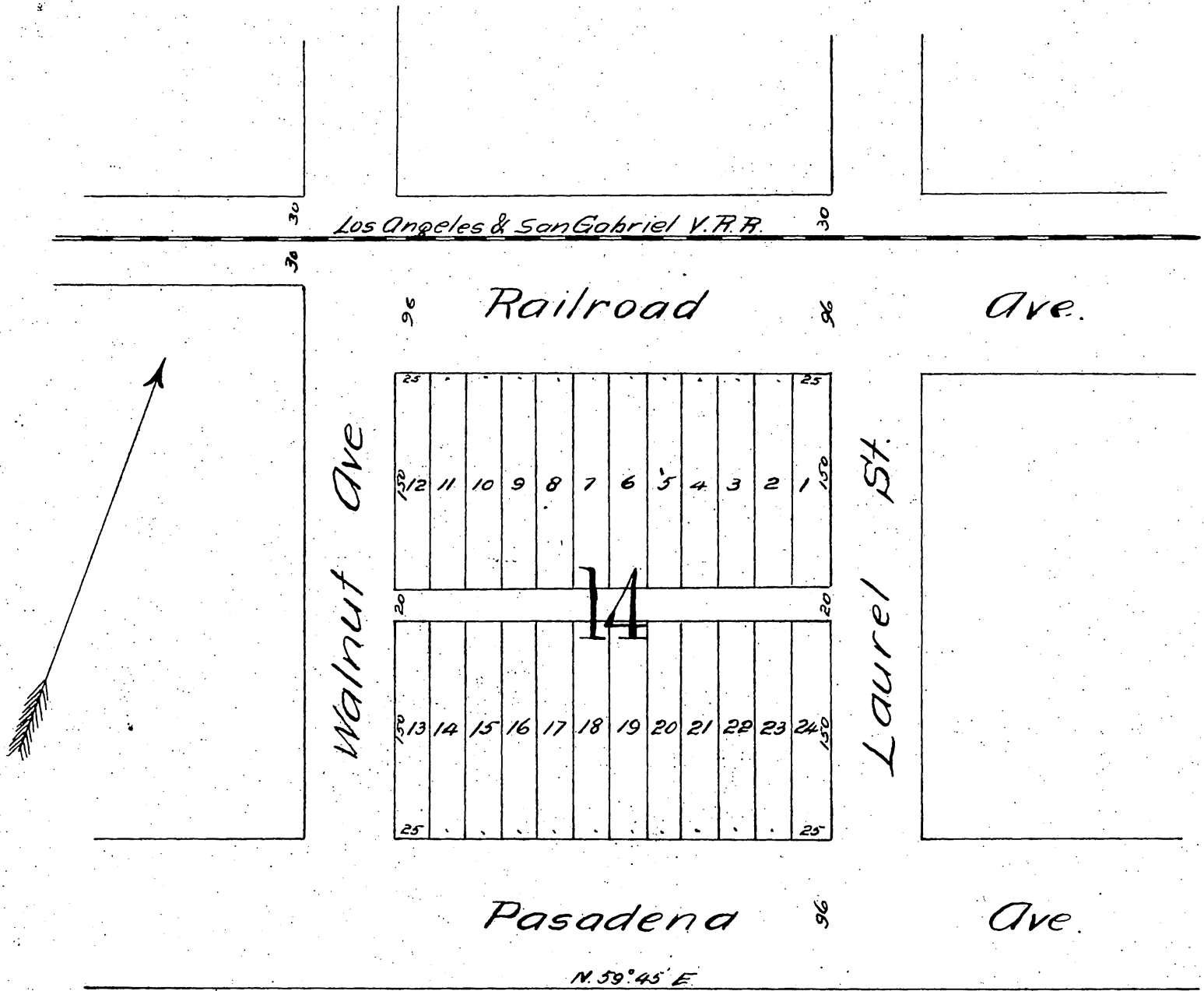


Ralph Rogers

Subdivision of Block 14
Highland Park.

Surveyed May 87 by



Note: The above is a resubdivision of Block 14 being a mendatory to Block 14 as per map recorded in Book 12 page 61 Miscellaneous Records.

A full, true and correct copy of the original recorded June 27, 1887 at 46 min. past 8 O. M. at request of Ralph Rogers
 Frank O. Gibson, County Recorder.
 By George Bayler, Deputy.