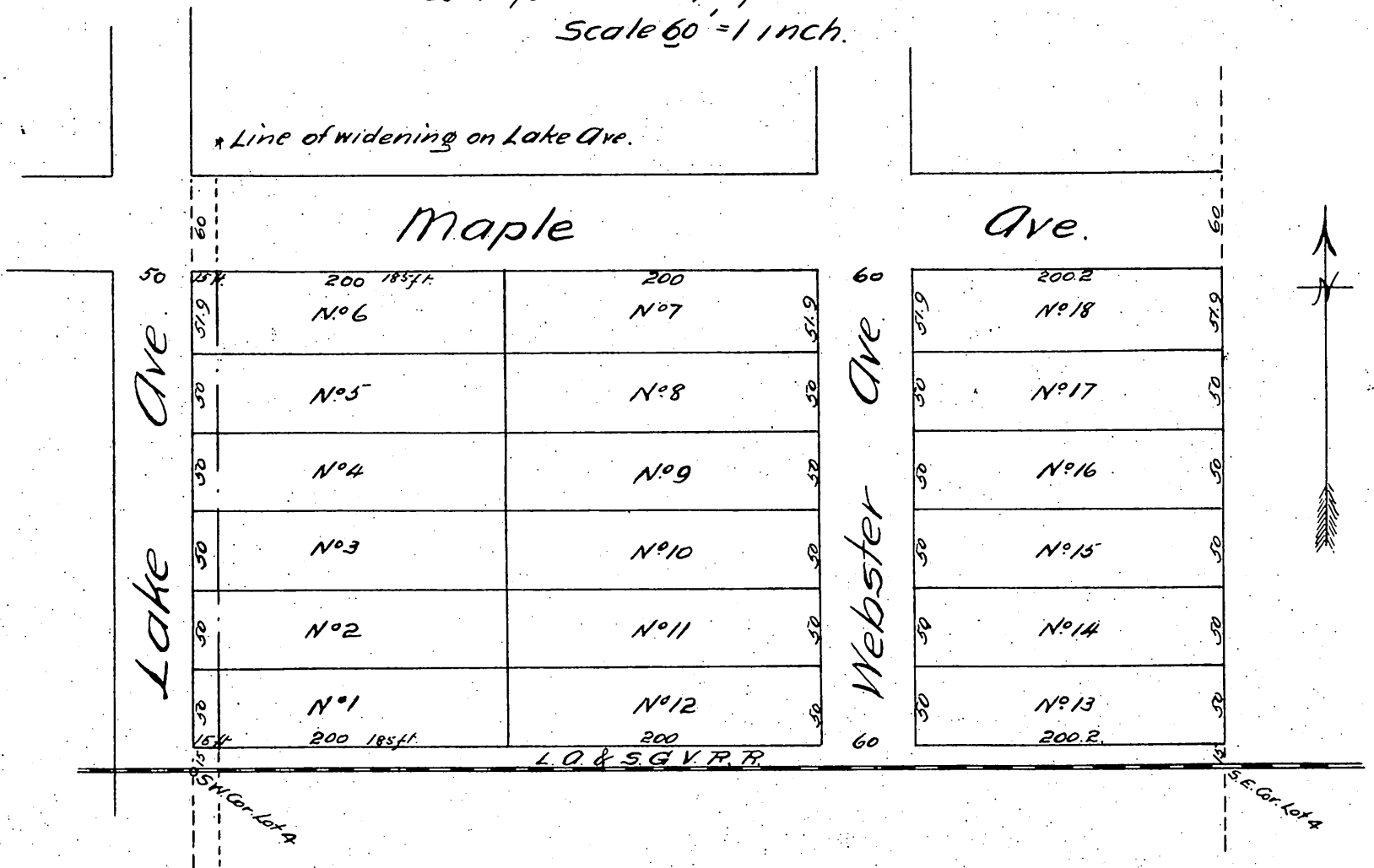


Map
 OF
 Mrs. M. A. Bartlett's
 Subdivision of the Southern portion of Lot 4
 Block F of San Pasqual Tract.
 of the lands of the
 Lake Vineyard Land & Water Assn.
 Pasadena Cal.

Surveyed Jan. 1887 by J. M. Willard, C.E.
 Scale 60' = 1 inch.



A full, true and correct copy of the original
 (reduced to the scale of 100 feet to one inch)
 recorded June 28, 1887 at 13 min. past 11 A.M.
 at request of Mrs. M. A. Bartlett.

Frank A. Gibson County Recorder.
 By George Langbee, Deputy.