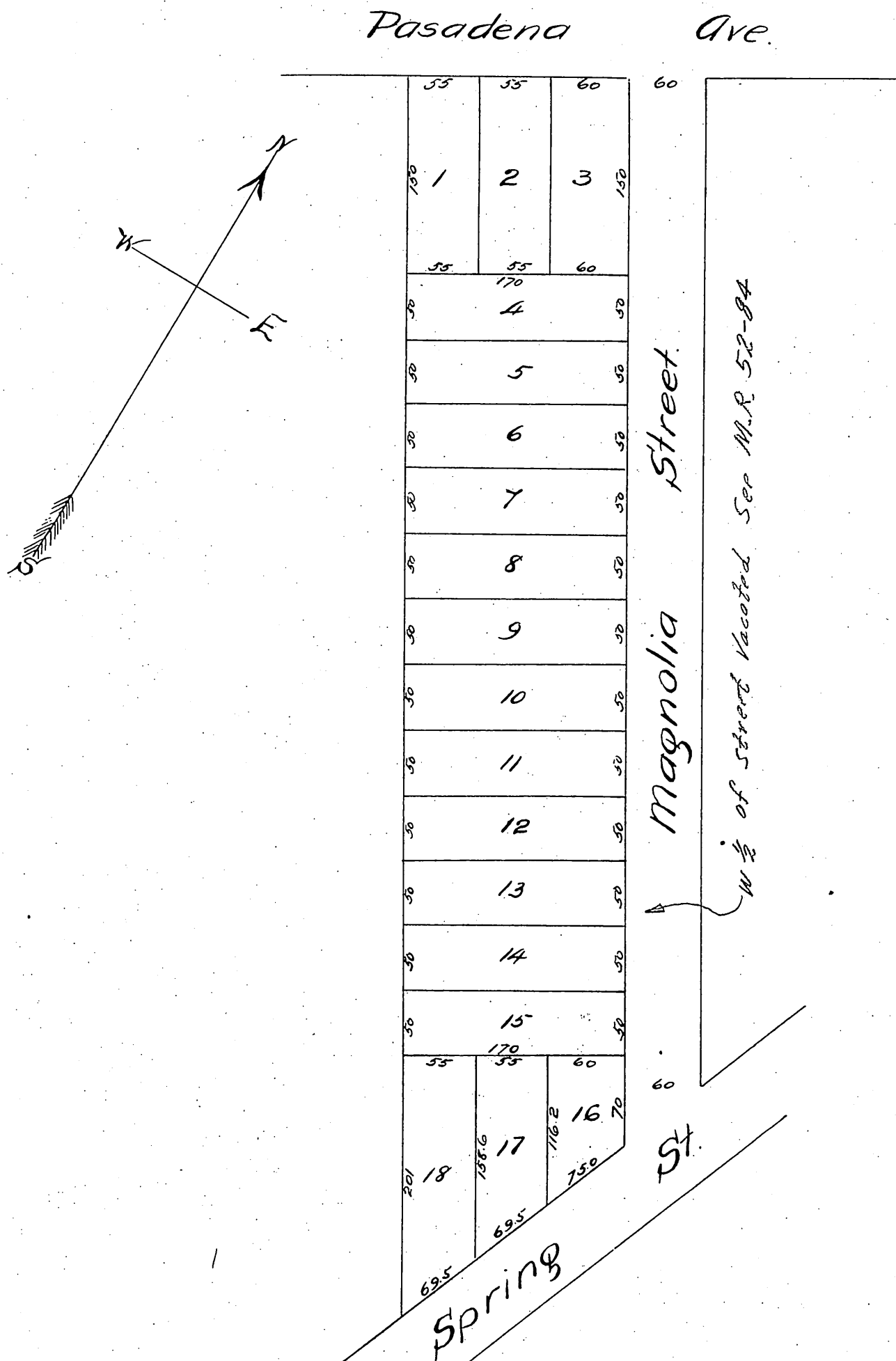


Map OF Witte's Subdivision of Block 40 Highland Park Tract. Los Angeles Co Cal.

H. J. Stevenson Surveyor 1887
Scale 50 feet to one inch.



A full, true and correct copy of the original
(reduced to the scale of 100 feet to one inch)
recorded June 28, 1887 at 45 min. past 11 A.M.
at request of Edward J. Witte.

Frank A. Gibson County Recorder
By George Bugbee, Deputy.