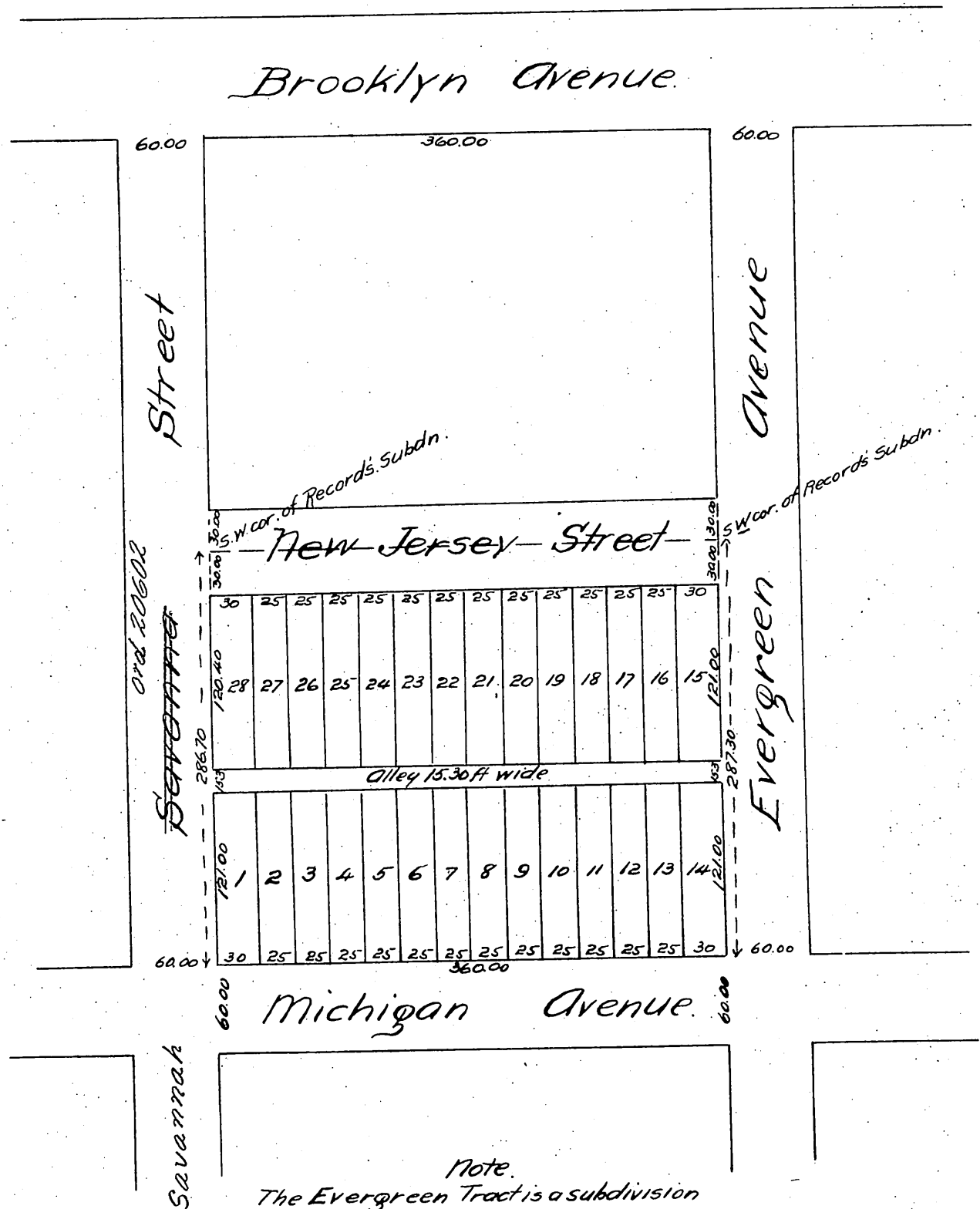


Plat OF THE Evergreen Tract

in the City of Los Angeles.
Subdivided.

at the request of John P.P. Peck.
in June 1887 by G.B. King

Scale 100 ft. to one inch.



A full, true and correct copy of the original recorded June 28, 1887 at 58 min. past 2 P.M. at request of J.P.P. Peck.

Frank A. Gibson, County Recorder.
By George Touhy, Deputy.