

Map showing subdivision of Blocks "N" & "O"

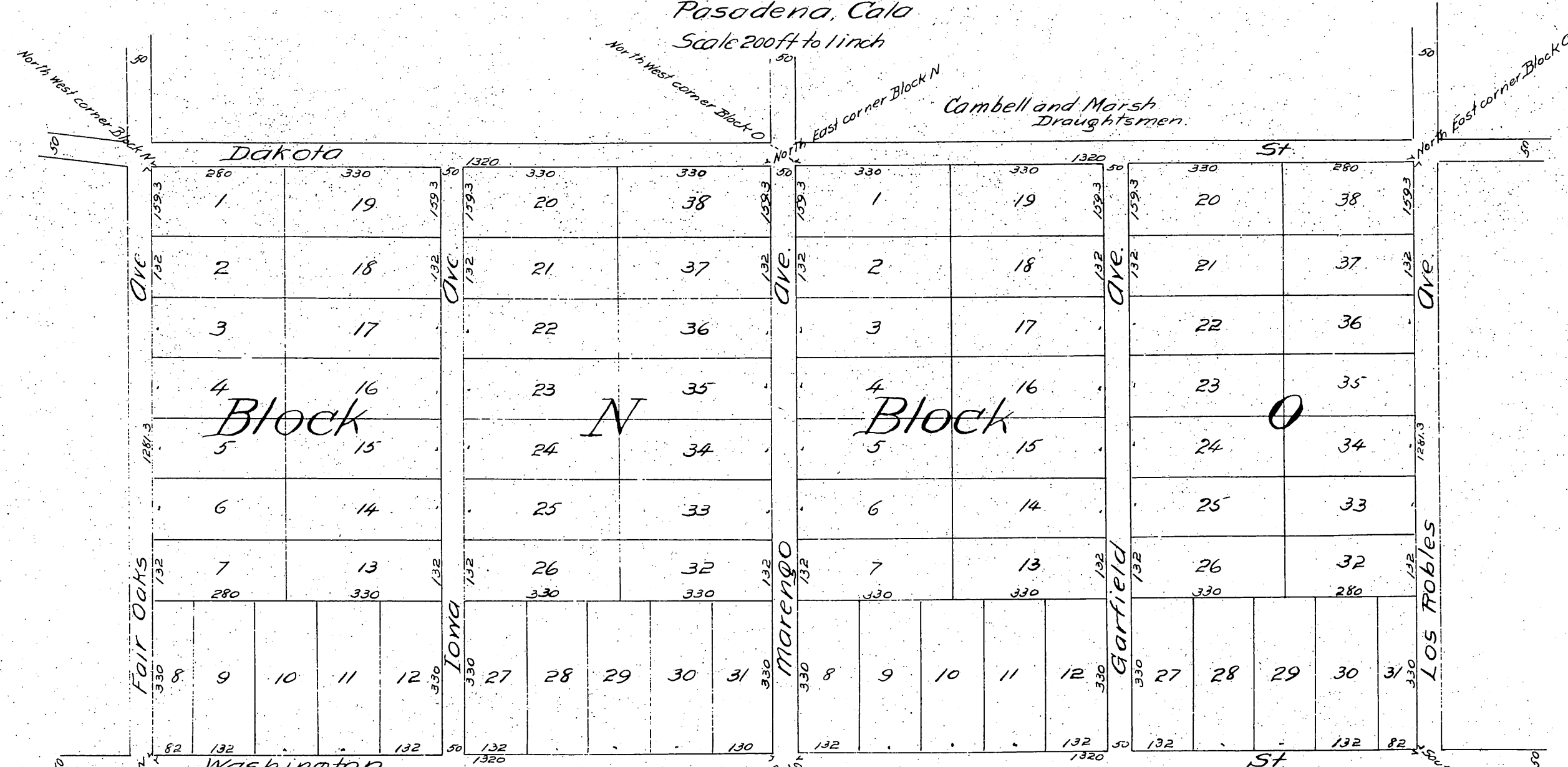
of the subdivided lands of J.H. Painter & B.F. Ball

Rancho San Pascual

Pasadena, Cal.

Scale 200ft to 1inch

Cambell and Marsh Draughtsmen.



Note: Being the same property as shown on map recorded in Book 4, Page 551, Miscellaneous Records of Los Angeles Co. Cal.

A full, true and correct copy of the original (reduced to the scale of 250 feet to one inch) recorded June 30, 1887 at 23 min. past 3 P.M. at request of J.H. Painter.
 Frank A. Gibson County Recorder.
 By George B. Bugbee Deputy.

