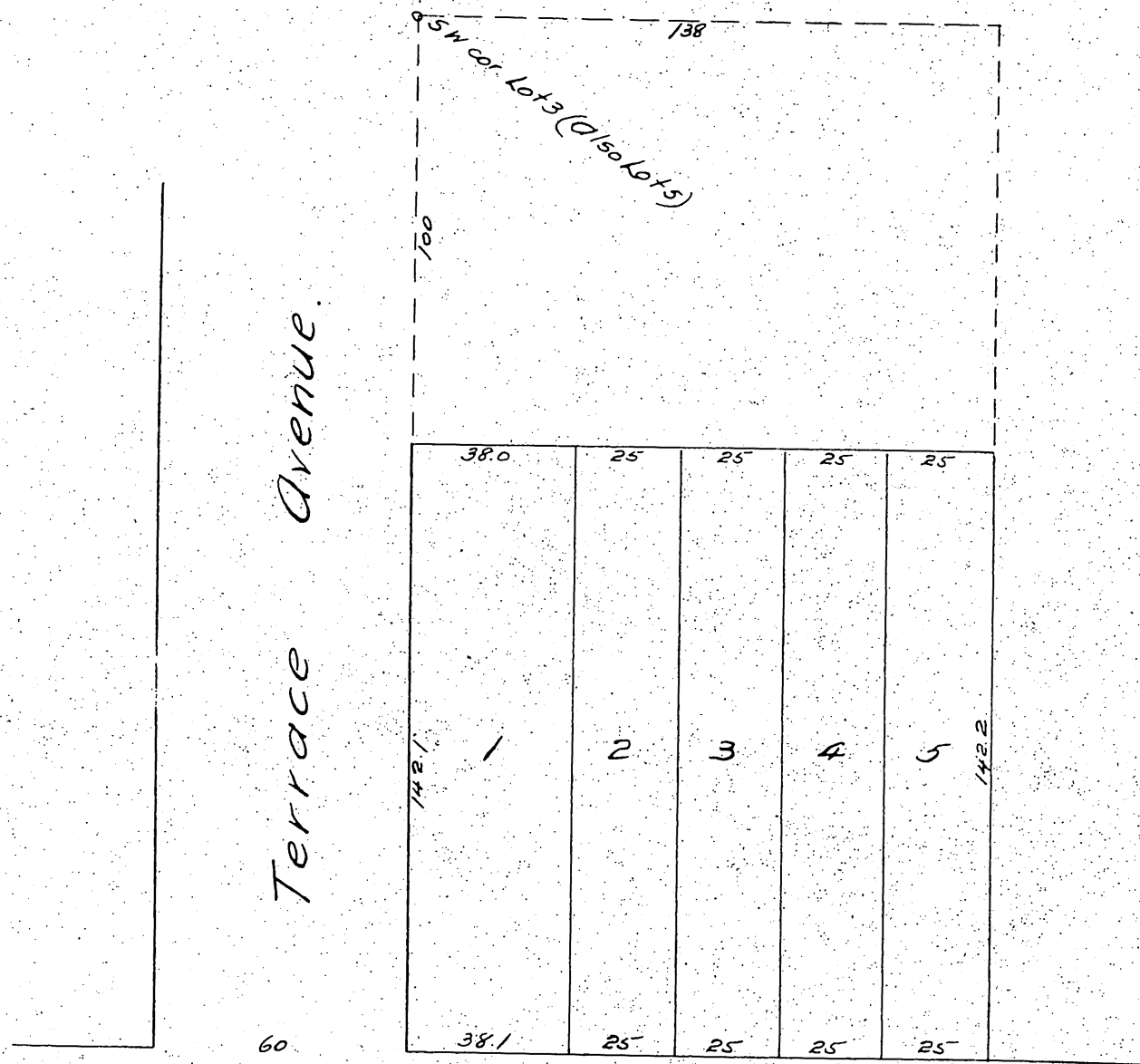


Plat
 of
 Ross's Subdivision
 of a portion of Lot 3 of the Gillmore Vineyard Tract
 as recorded in Book 5 Page 522 of Misc. Records of L.A. County
 Pasadena, Cal.
 Surveyed by J.M. Willard C.E.
 Scale 20'-1"



A full, true and correct copy of the original
 (reduced to the scale of 40 feet to the inch)
 recorded July 1, 1887 at 24 min. past 9 A.M.
 at request of John Ross.
 Frank A. Gibson County Recorder
 By George Kugler Deputy