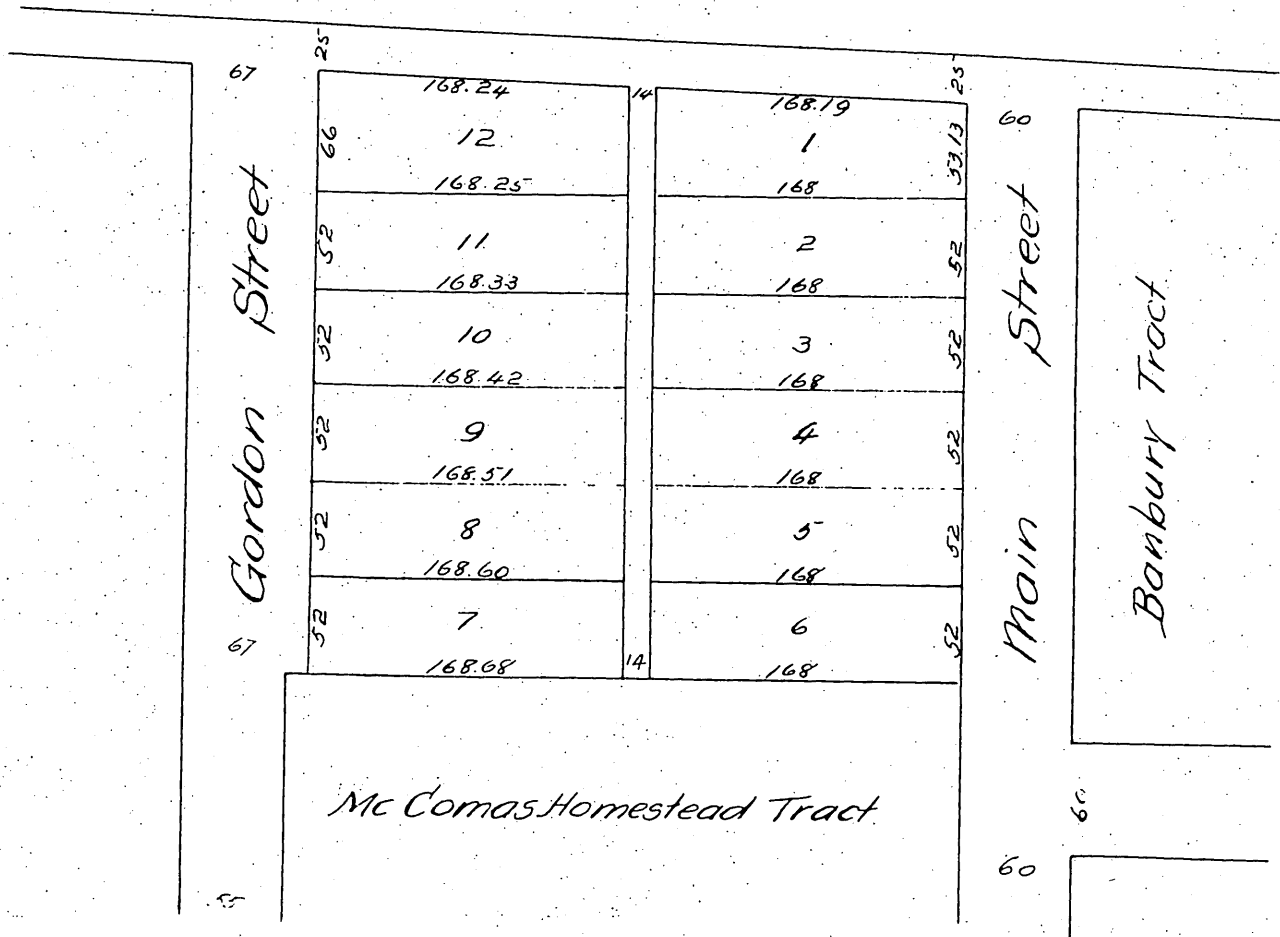


Map  
 OF  
 C. I. Lorbeer's Subdivision  
 of part of Lots 2 & 3 Block 180  
 Pomona, Cal.

Jas T. Taylor & Co Surveyors  
 Scale 50 ft = 1 inch.



A full, true and correct copy of the original  
 (reduced to the scale of 100 feet to one inch)  
 recorded July 2, 1887 at 10 min. past 8 O. M.  
 at request of J. E. Mc Comas  
 Frank A. Gibson County Recorder.  
 By George Bugbee Deputy.