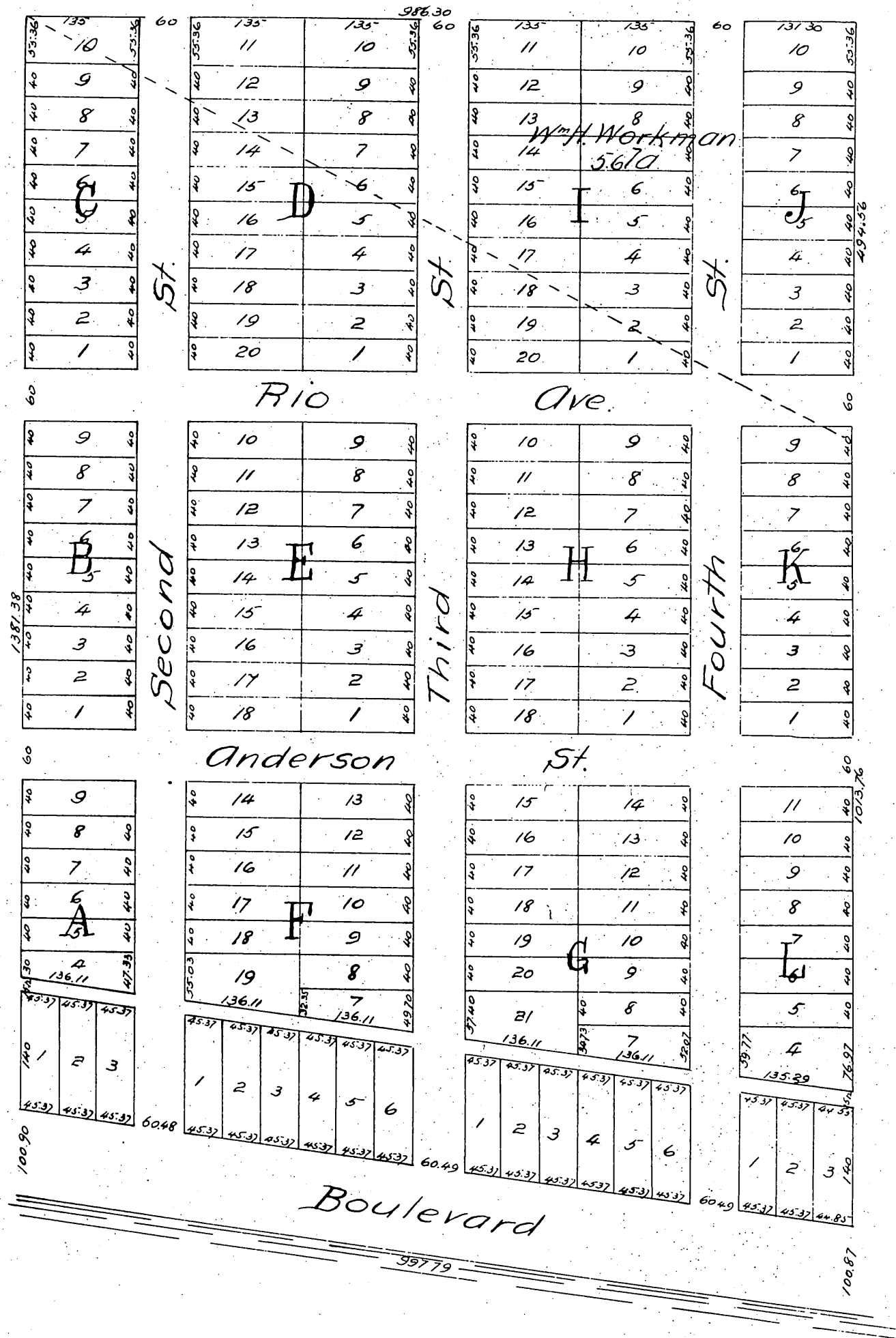


# Map of part of Blow Tract

Subdivided by request of  
Jacoby & Thorne June 1887

L.H. Carver C.E.  
Scale 100' = 1"



A full, true and correct copy of the original  
(reduced to the scale of 150 feet to one inch)  
recorded July 5, 1887 at 30 min. past 10 A.M.  
at request of L. Thorne.

Frank A. Gibson County Recorder  
By George Bugbee, Deputy.