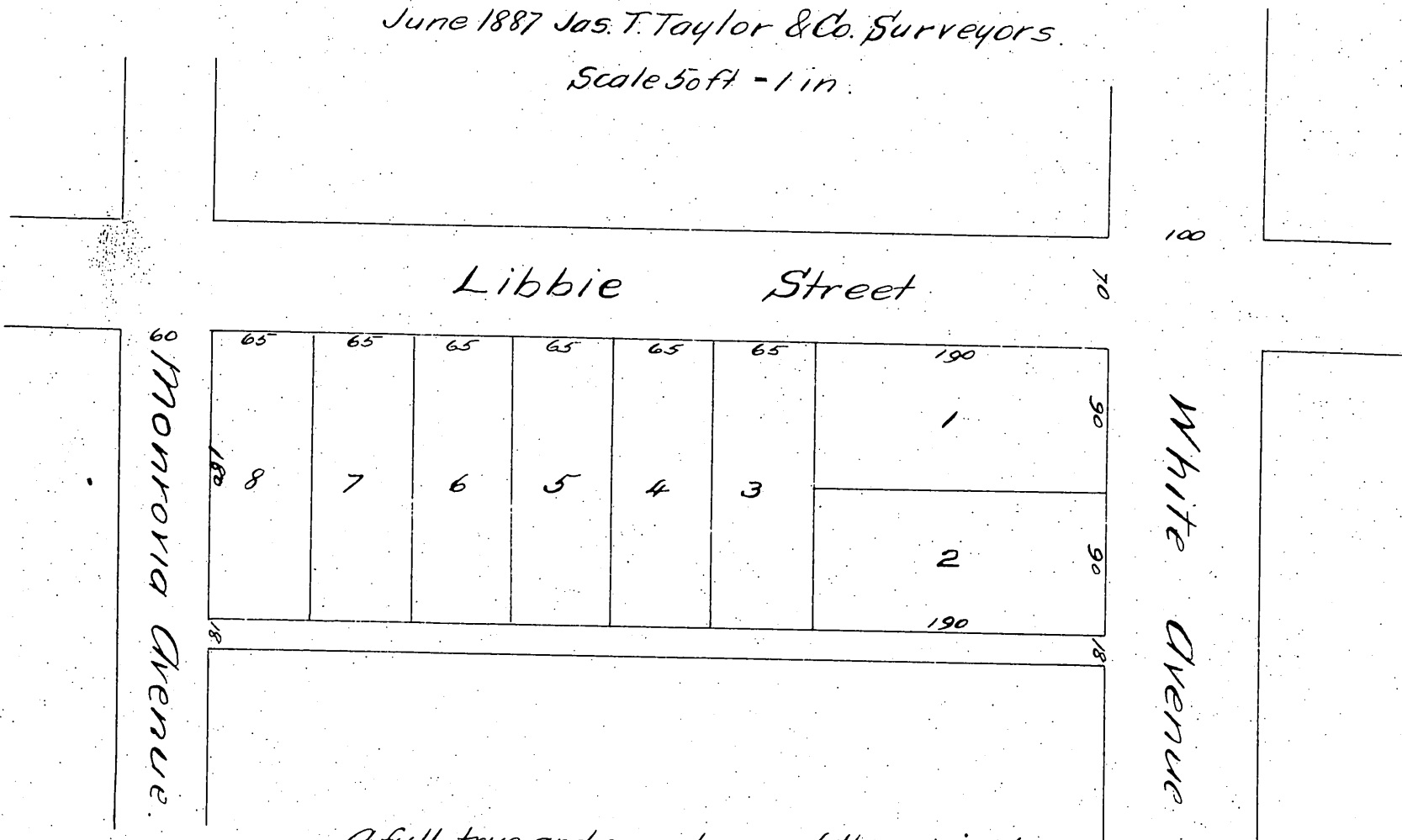


Map
 OF
 Dunn's Subdivision
 of part of Lot 3, Block 183
 Pomona, Cal.

June 1887 Jas. T. Taylor & Co. Surveyors.
 Scale 50ft - 1 in.



A full, true and correct copy of the original
 (reduced to the scale of 100 feet to one inch)
 recorded July 5, 1887 at 10 min. past 1 P.M.
 at request of F.D. Joy

Frank A. Gibson. County Recorder.
 By George Baughsee. Deputy.