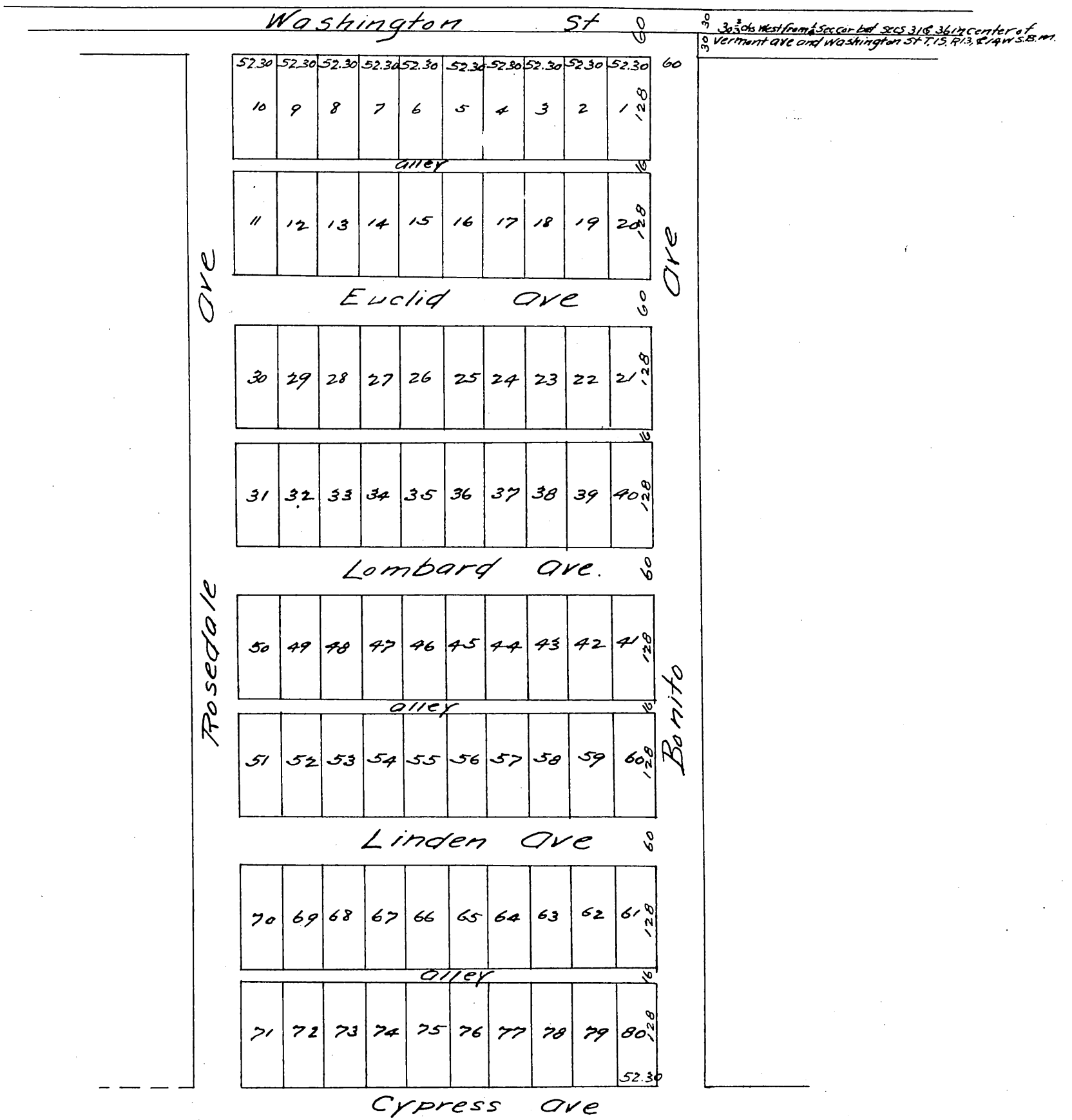


MAP
OF THE
Bonito Tract.
Los Angeles County California.
Surveyed July 1887 by V.J. Rowan.

Description of the Bonito Tract.
Commencing at a Point 30 2/3 chs West of the N.E. corner of the S.E. quarter of Sec 36, T. 1. S. R. 14. W. S.B.M.
Thence West 9 1/3 chs, thence South 20 chs, thence East 9 1/3 chs thence North 20 chs to Pt of beg, and being
the Westerly 18.65 ac's of the "Freeman Tract" a map of which is recorded in Book 3 Page 114. This
Records of Los Angeles Co., Cal.



A full, true and correct copy of the original (reduced to scale of 150 feet to one inch) recorded July 7th 1887 at 29 min past 1 P.M. at request of Edward Record's
Frank A. Gibson County Recorder.
By Wm E. Johnston. Deputy.