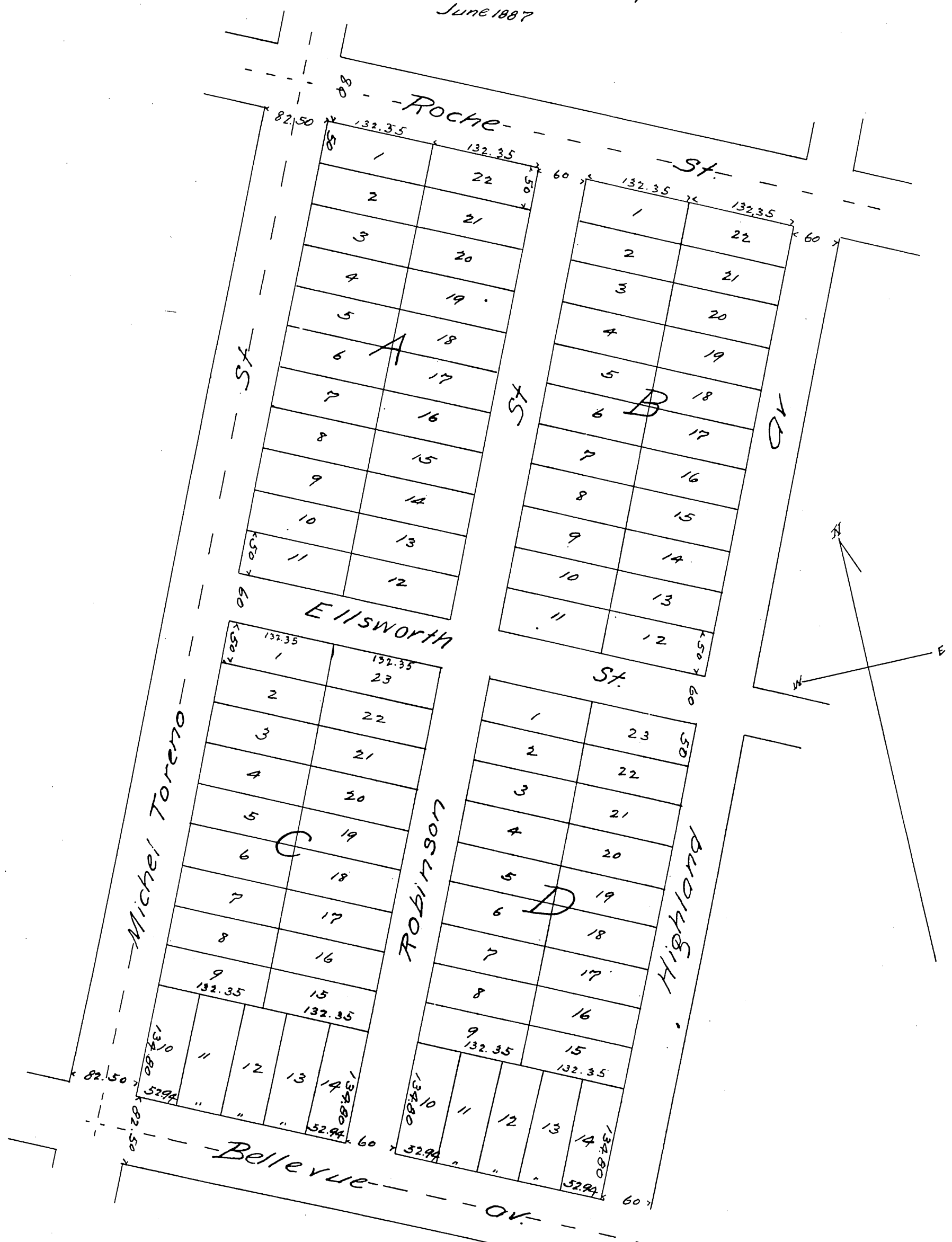


MAP
OF
Robinson's Subdivision
of the
West half of Lot 5 Block 28 Hancock's Survey.
Los Angeles
Surveyed by E. McCullom Surveyor.
June 1887



A full, true, and correct copy of the original
reduced to scale of 120 feet to one inch, recorded,
July 7th 1887 at 4:30 P.M. at request of, J. S. Robinson,
Frank Gibson County Recorder.
By W^m E. Johnston Deputy.