

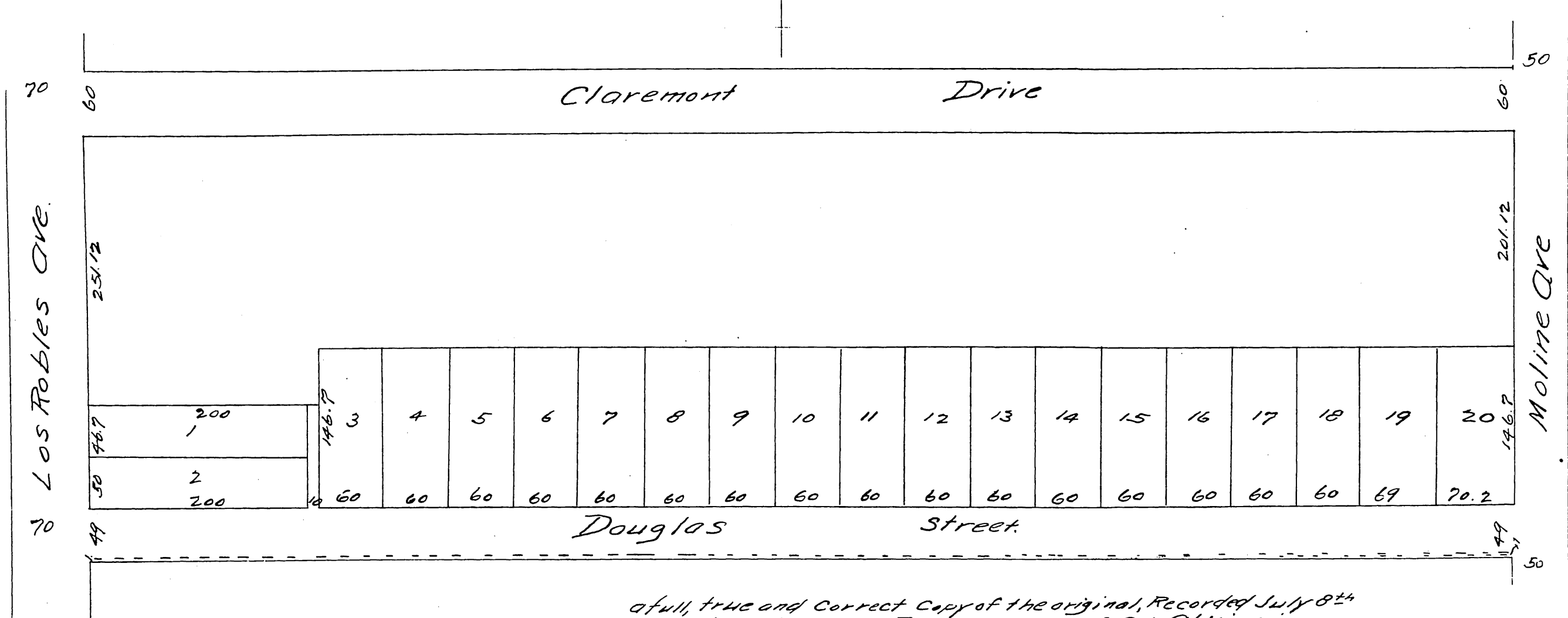
MAP

OF THE

Columbia Tract

Situated in Block S of the Pointer & Ball Tract.
Pasadena Cal.

Surveyed June 1887 by Piggins Bros Surveyors.
Scale 100ft to 1 inch.



A full, true and correct copy of the original, Recorded July 8th
1887 at 12 min Past 1. P.M. at request of O. L. Atkins.
Frank A. Gibson County Recorder.
By Wm E. Johnston Deputy.