

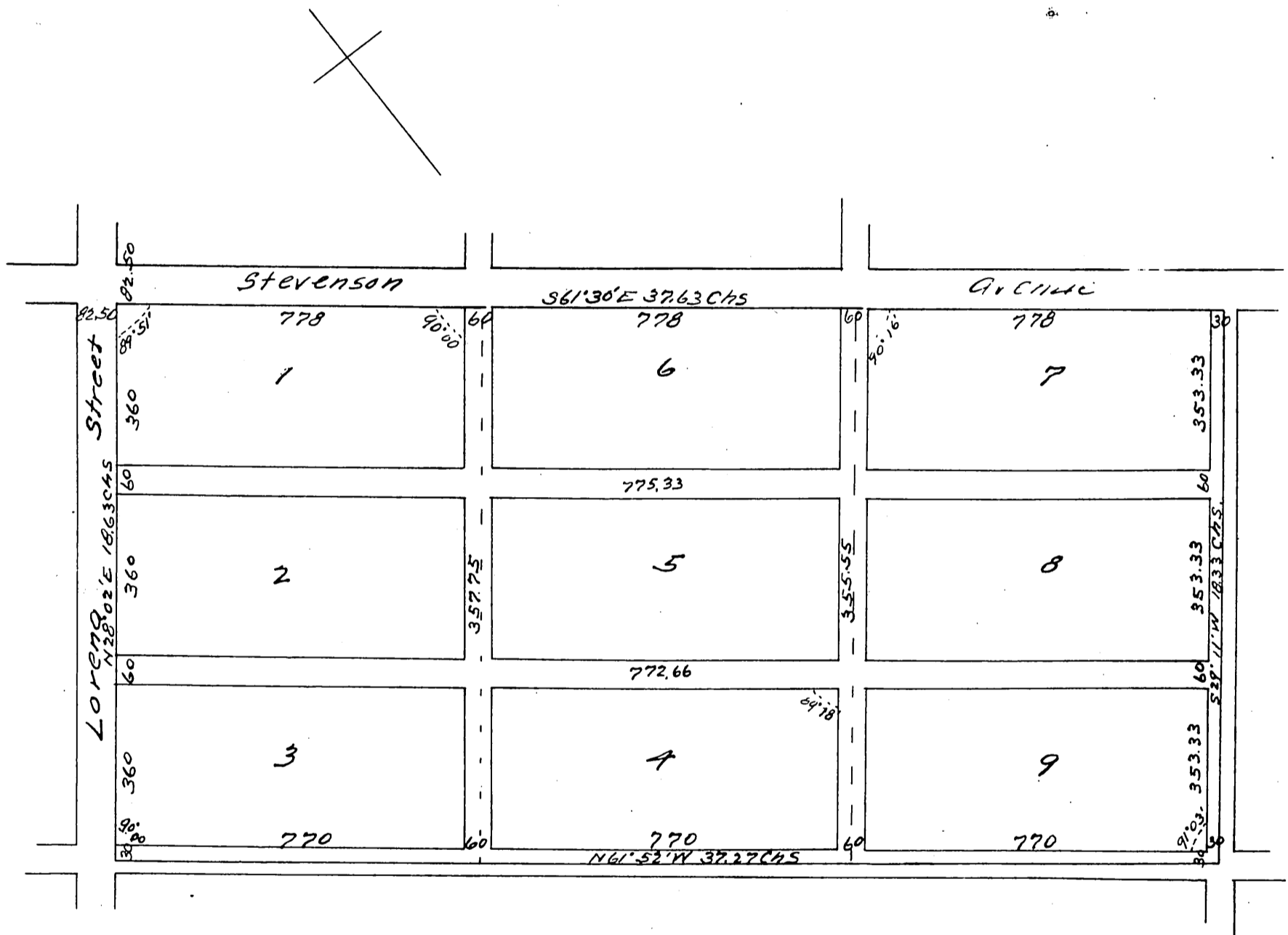
# MAP OF THE SPENCE TRACT

Lots 3 & 4 Block 77, H.S.

Los Angeles City Cal.

Surveyed Oct. 1886 by W.H. Tinker.

Scale 100 ft 1 in



A full true and correct copy of the original (reduced to the scale of 300 feet to one inch) recorded July 9<sup>th</sup> 1887 at 20 min past 3 P.M. at request of M. L. Wicks.

Frank A. Gibson County Recorder.  
By Wm E. Johnston Deputy.