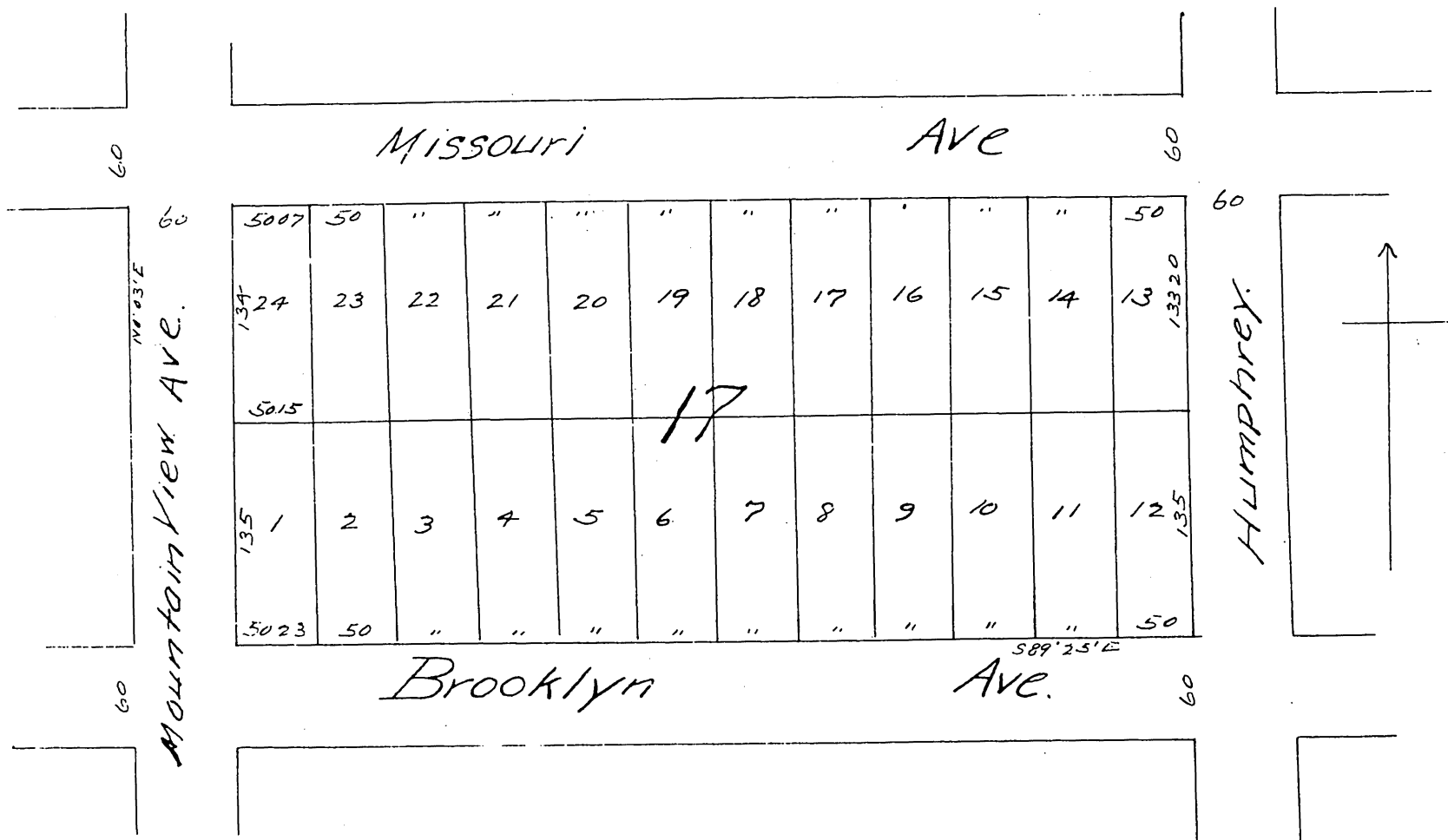




Rector's Subdivision
of
Block 17 Humphreys First Addⁿ to
BOYLE HEIGHTS.

Surveyed in Jan 1887 by McClure Bros.

Scale 1 inch = 100 ft.



A full, true and correct copy of the original recorded
July 11th 1887 at 2^o P.M. at request of A.O. Damon

Frank A. Gibson County Recorder.
By Wm E Johnston Deputy.