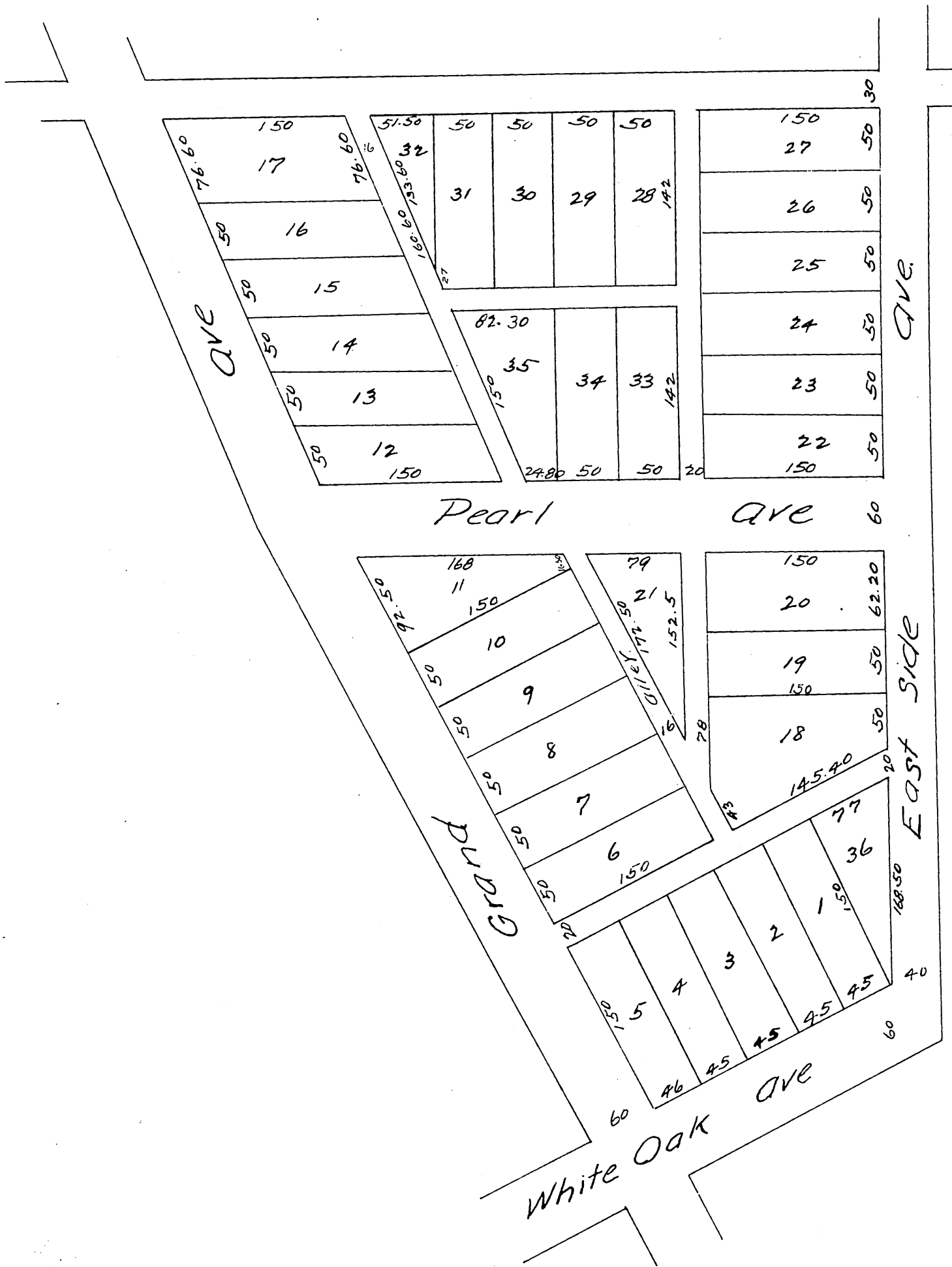


MAP
of
Field ^{by} Booth's Addition.
to the Town of
MONROVIA

Said addition being a re subdivision of Blocks A and B
of the original Monrovia Tract.
Surveyed May 1887 by Theo G Koeberle, C.E



a full, true and correct copy of the original, (reduced
to scale of 100ft to one inch) Recorded July 13th 1887
at 11.3 A.M. at request of Jas Booth.
Frank Q. Gibson County Recorder.
By W^m E Johnston Deputy.