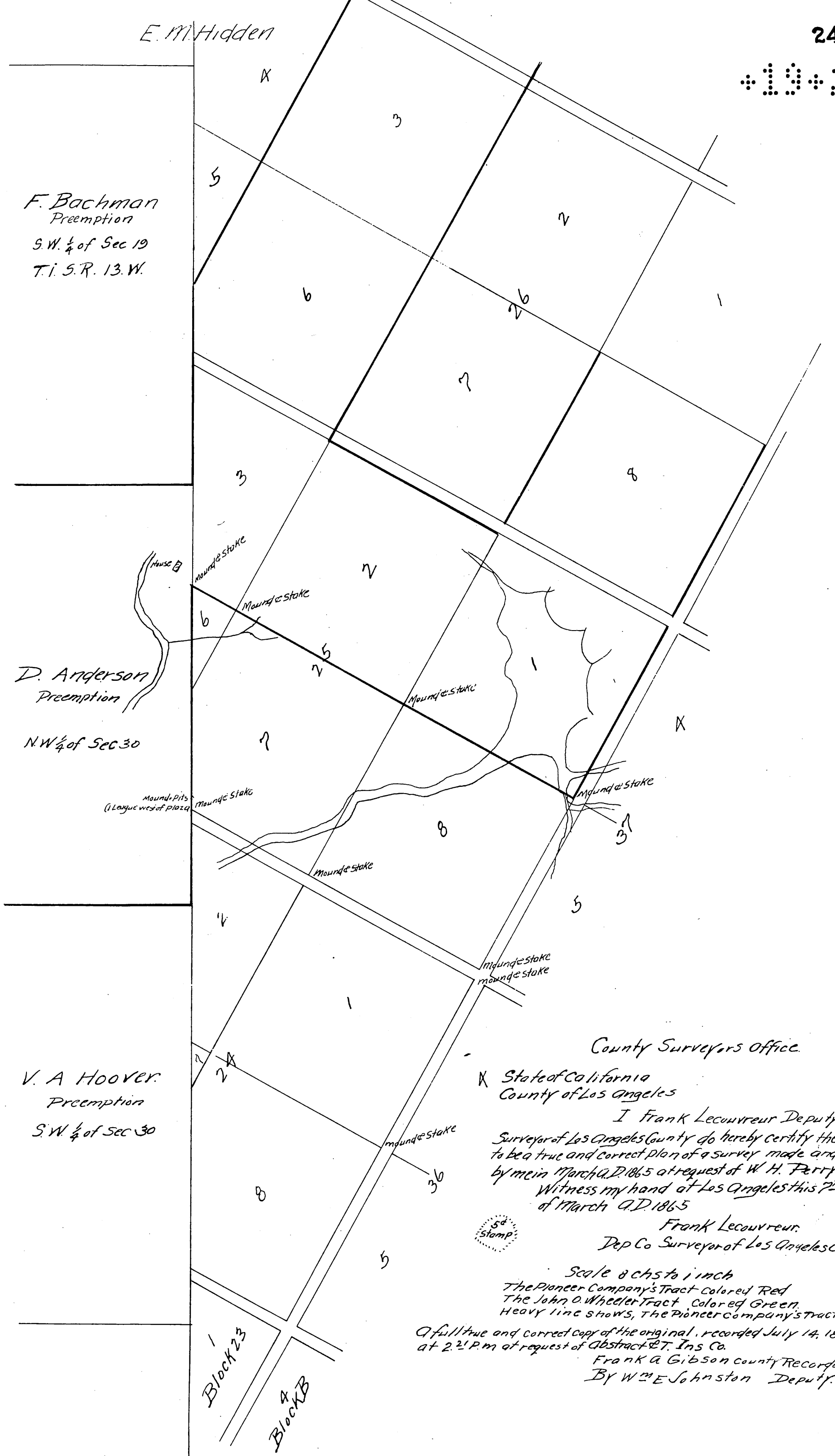


F. Bachman  
Preemption  
S.W. 1/4 of Sec 19  
T. 1 S. R. 13. W.

D. Anderson  
Preemption  
N.W. 1/4 of Sec 30

V. A Hoover  
Preemption  
S.W. 1/4 of Sec 30



County Surveyors Office.

K State of California  
County of Los Angeles

I Frank Lecouvreur Deputy County  
Surveyor of Los Angeles County do hereby certify the within  
to be a true and correct plan of a survey made and executed  
by me in March A.D. 1865 at request of W. H. Perry  
Witness my hand at Los Angeles this 7<sup>th</sup> day  
of March A.D. 1865

Frank Lecouvreur  
Dep Co Surveyor of Los Angeles County



Scale 8 ch to 1 inch  
The Pioneer Company's Tract colored Red  
The John O. Wheeler Tract colored Green  
Heavy line shows, The Pioneer company's tract.

A full true and correct copy of the original, recorded July 14, 1887  
at 2:21 P.M. at request of Abstract & T. Ins Co.

Frank A. Gibson County Recorder  
By W. M. E. Johnston Deputy.