

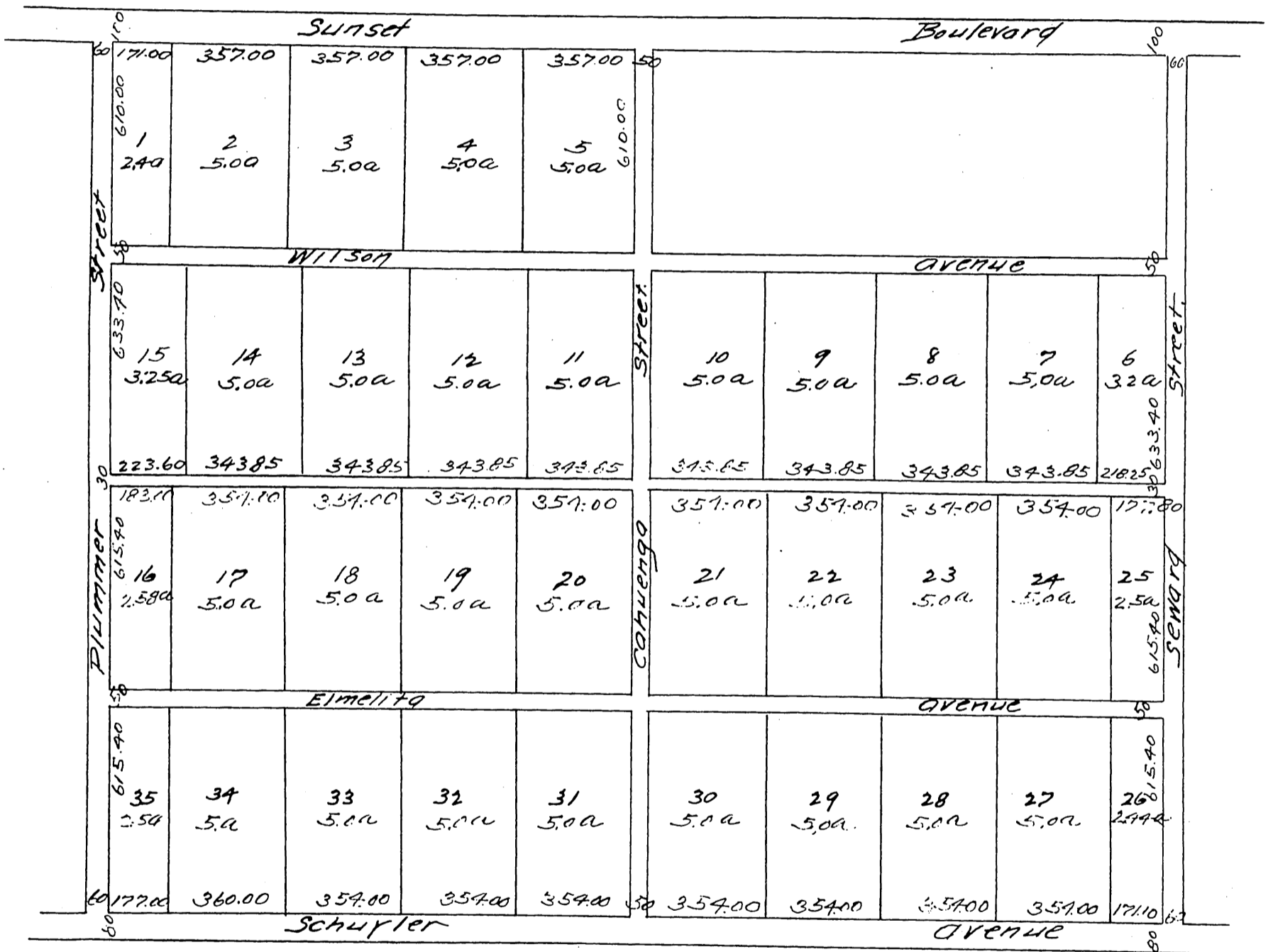


MAP

OF

Tonner & Garbutt's Subdivision, of the S.W. LITTLE TRACT.

The amended map of the Little Tr. recorded in Book 17
Page 71 Misc Records Los Angeles Co, Cal.
Surveyed July 1887 by E.G. Jones
Scale 300' = 1 inch.



A full, true and correct copy of the original
(reduced to scale of 400 feet to one inch) recorded
July 15th 1887 at 12th M at request of Tonner & Garbutt.

Frank Q. Gibson County Recorder.
By W^m E Johnston Deputy