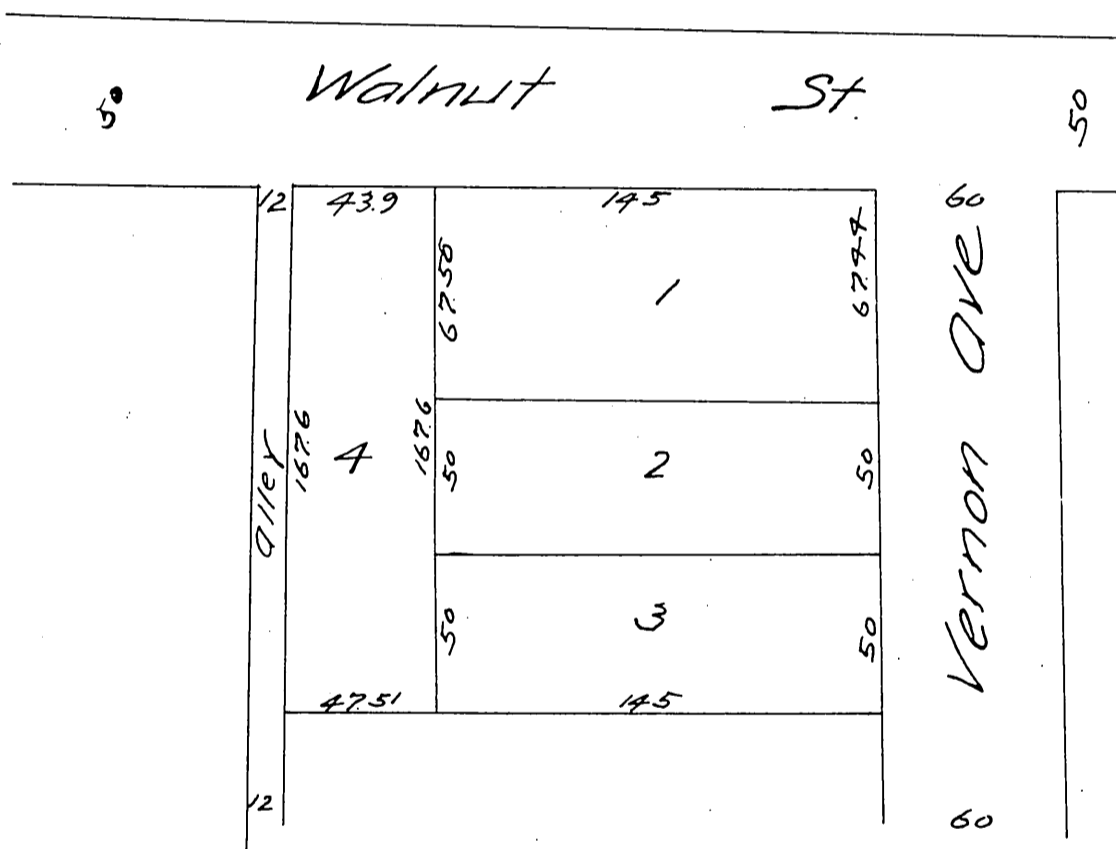


MAP  
 of  
 J.W. Wortman's Subdivision  
 of Lots 5, 6, & 7 of Millard's Subdivision as  
 recorded in Book 9, Page 79.  
 Pasadena Cal  
 Surveyed March 1887 by Riggins & Phillips Surv's  
 Scale 40ft to the inch.



A full, true and correct copy of the original recorded  
 July 13 1887 at 1:34 P.M. at request of J.W. Wortman's.  
 Reduced to scale of 60 feet to one inch.

Frank A. Gibson County Recorder.  
 By W<sup>m</sup> Johnston Deputy