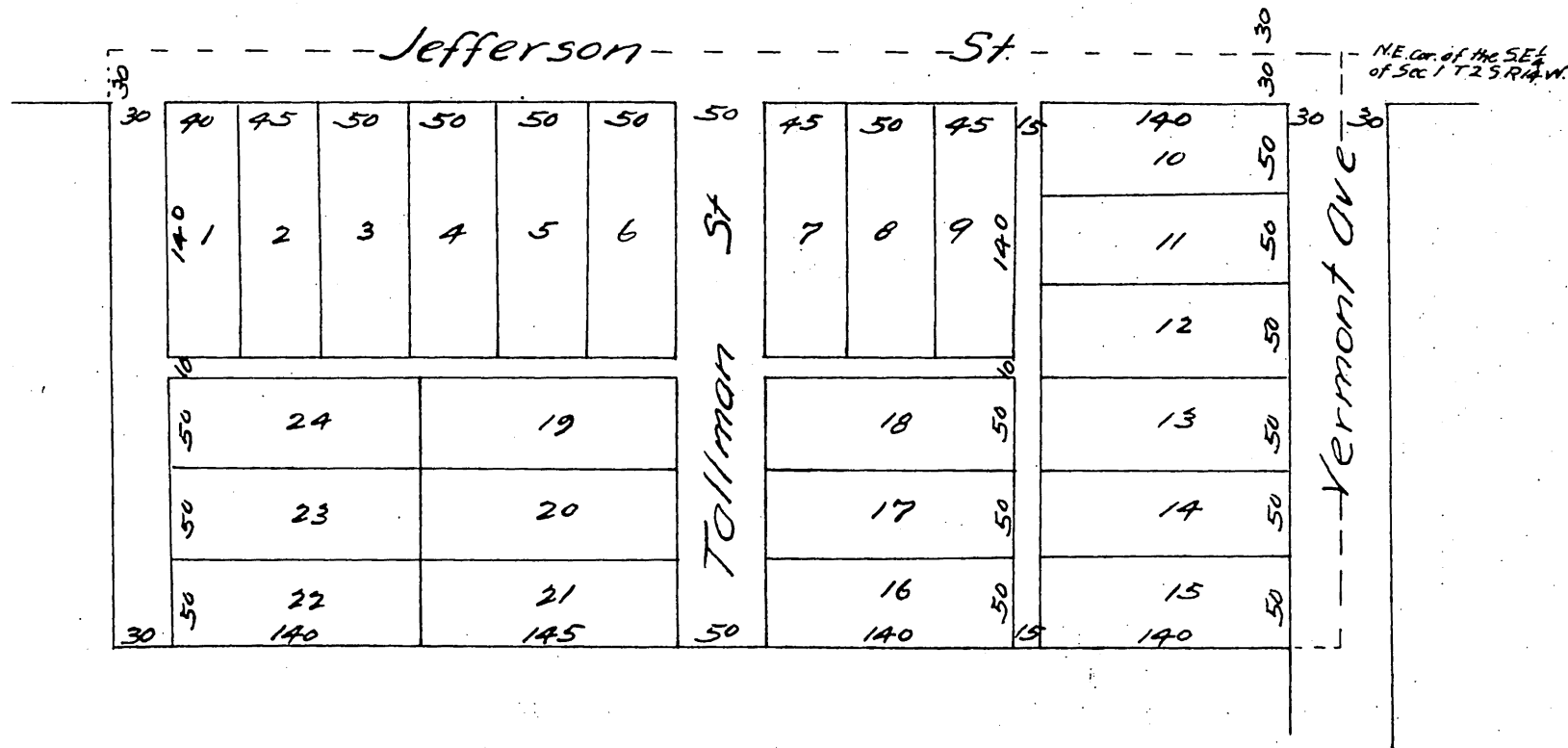


# MAP of the Elliott Tract

the Subdivision of part of the SE  $\frac{1}{4}$  of Sec 1, T. 2, S. R. 14 W  
S.B.M. as surveyed July 1887 by E. G. Jones.



A full true and correct copy of the original (reduced to the scale of 100 feet to one inch) Recorded July 16, 1887 at 9:23 AM. at request of E. G. Miller.

Frank Q. Gibson Co Recorder.  
By W. E. Johnston Deputy.