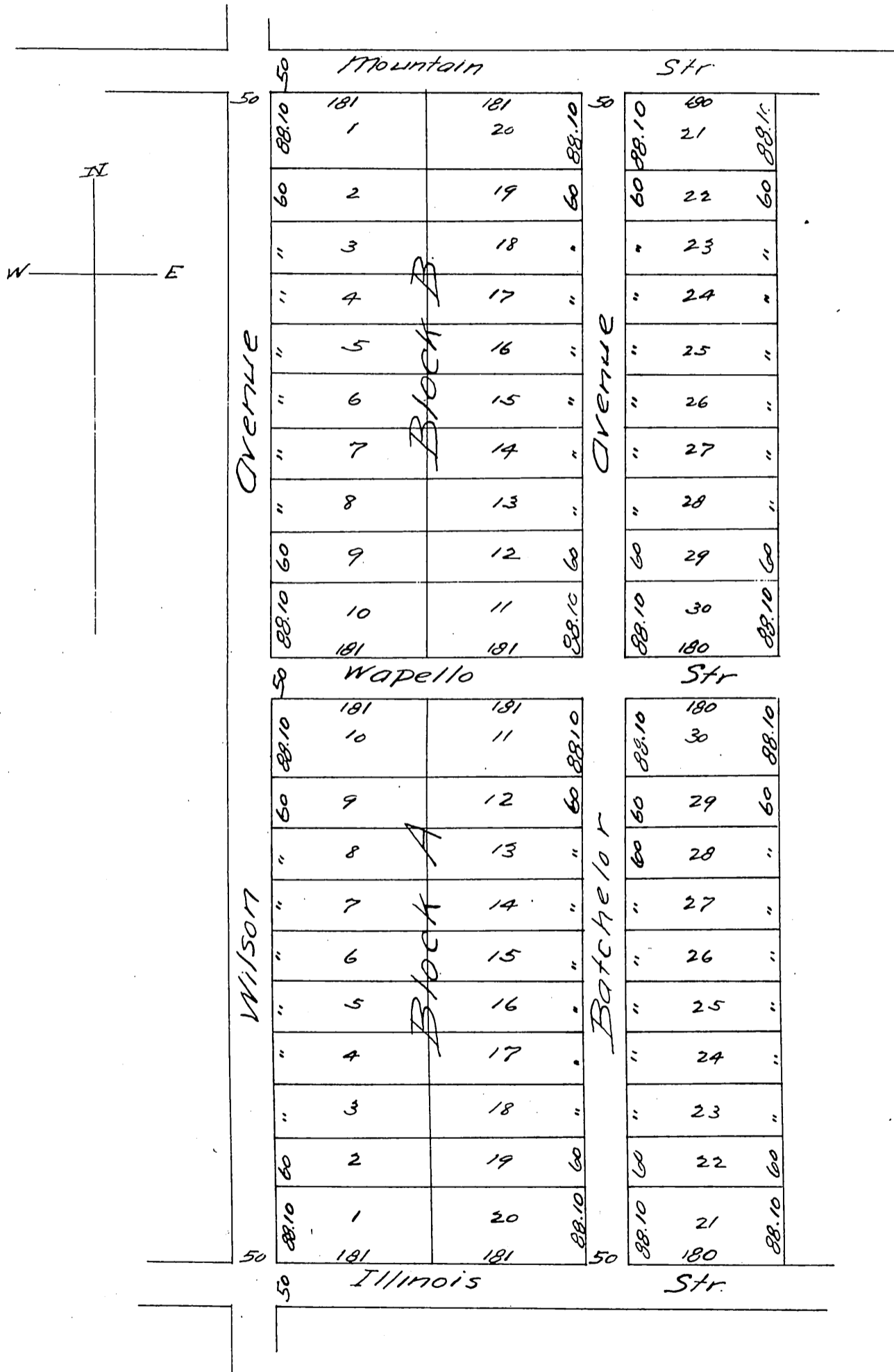


MAP of Leighton's Subdivision

of a part of the
A.B. GROGAN TRACT
of lands in the Rancho San Pasqual,
Pasadena Cal.
Surveyed July 1887 by Place and Pieper Surveyors & C.E.'s
Scale 80:1."



A full, true and correct copy of the original.
(Reduced to scale of 150 feet to 1 inch) Recorded
July 16 1887 at 11:24 A.M. at request of J. Leighton.

Frank A. Gibson & Co. Recorder.
By Wm. E. Johnston Deputy.

Note by Recorder: The words "Block A"
and "Block B" were written in pencil on
the original map.