

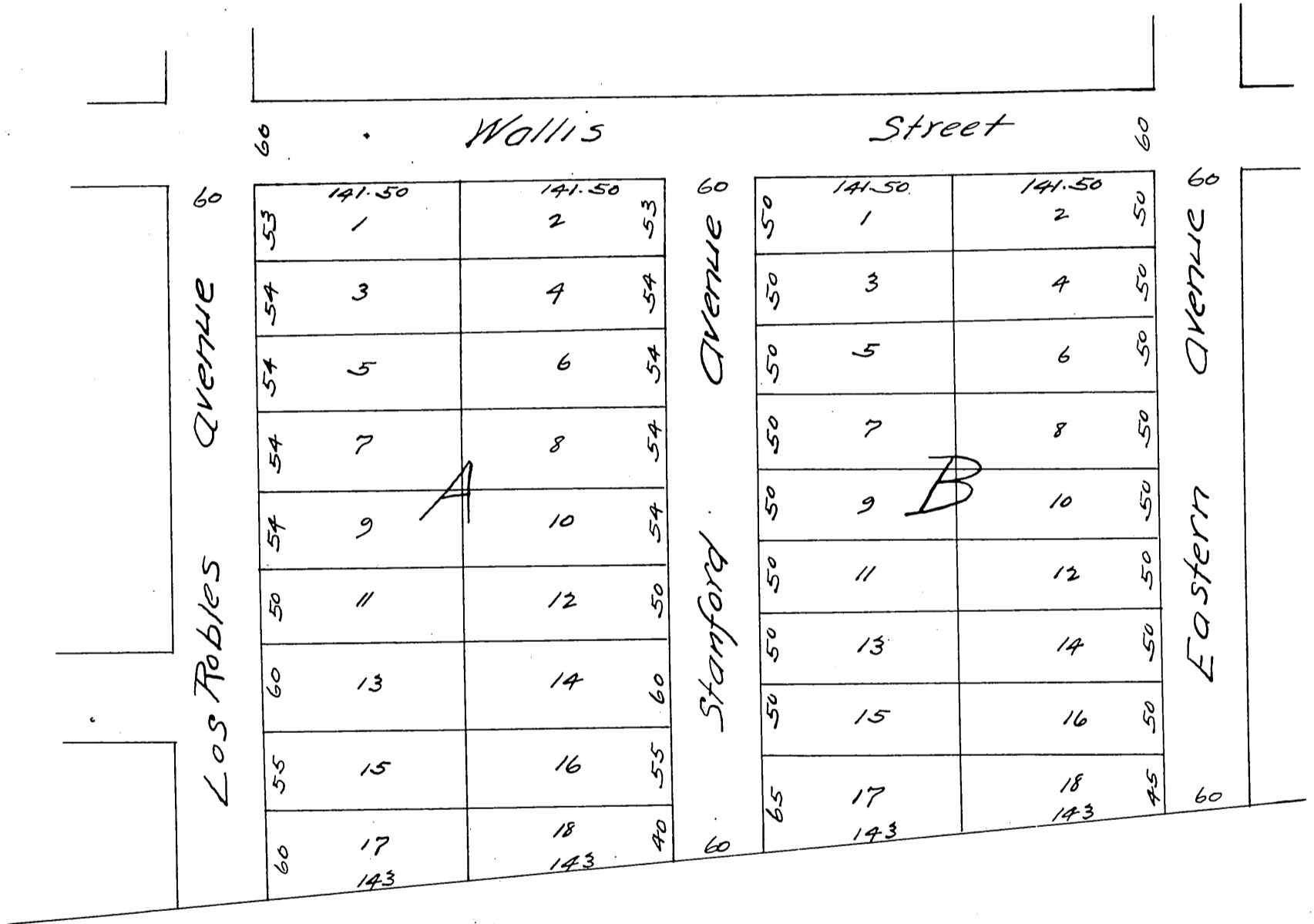
# MAP

of

## C.W. McKelvey's Subdivision of Lot 12 in Block P. San Pascual Tract

as recorded in Book 3 page 315 of the Miscellaneous Records of Los Angeles County

Scale 100 ft to the inch.



A full true and correct copy of the original recorded July 18<sup>th</sup> 1887 at 11<sup>54</sup> a.m. at request of C.W. McKelvey

Frank G. Gibson County Recorder  
By Wm E Johnston Deputy.

See M.R. 32-81  
M.R. 42-63  
M.B. 13-190