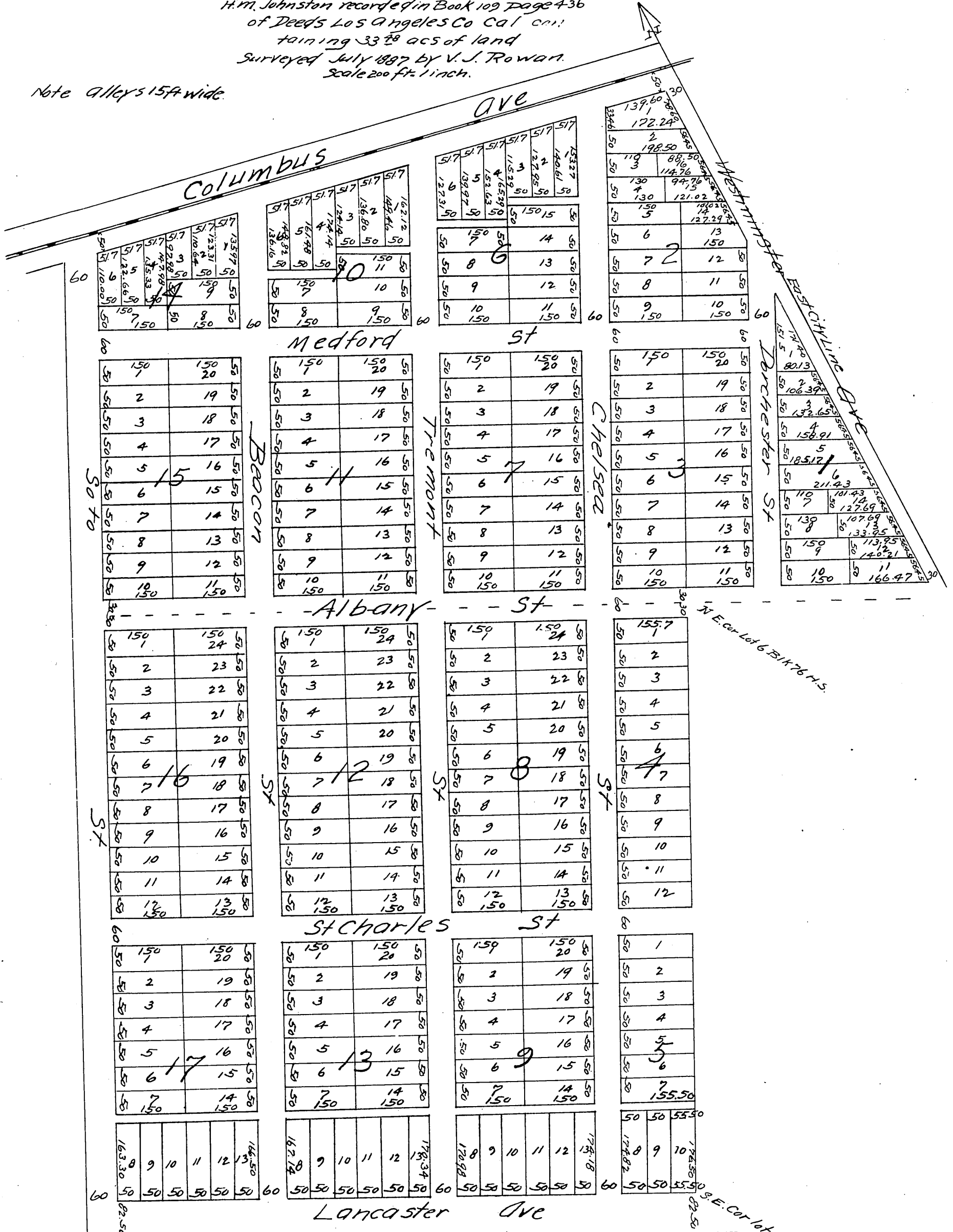


MAP of BOSTON HEIGHTS City of Los Angeles California

Being a Subdivision of Lot 5 Block 76 Hancock's Survey, also
of a tract of land in Orange St. Tract as described in
conveyance from John S. Griffin to W. Lacy and
H. M. Johnston recorded in Book 109 Page 436
of Deeds Los Angeles Co. Cal. con-
taining 33 2/3 acs of land
surveyed July 1887 by V. J. Rowan.
Scale 200 ft. = 1 inch.

Note alleys 15 ft wide.



a full, true and correct copy of the original recorded
July 18th 1887 at 4 1/2 P.M. at request of Geo A Robinson.
Frank A Gibson County Recorder.
By Wm E Johnston Deputy.