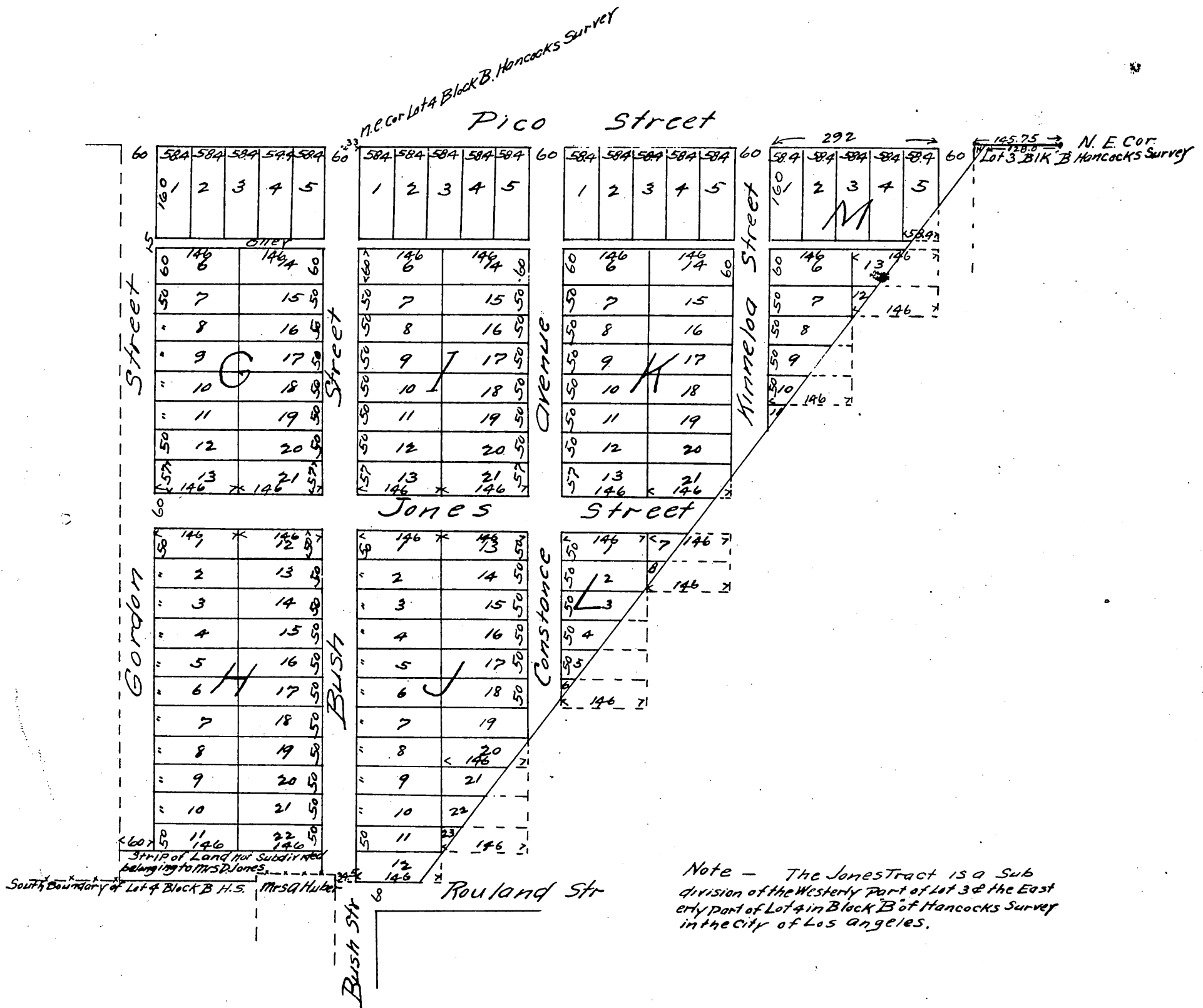


PLAT  
of the  
Jones Tract  
in the  
City of Los Angeles Cal  
Scale 100 feet to one inch



A full, true and correct copy of the original (reduced to the scale of 200 feet to the inch) Recorded July 19, 1887 at 1:30 P.M. at request of M. G. Jones  
Frank A. Gibson Co. Recorder.  
By Wm E Johnston Deputy.