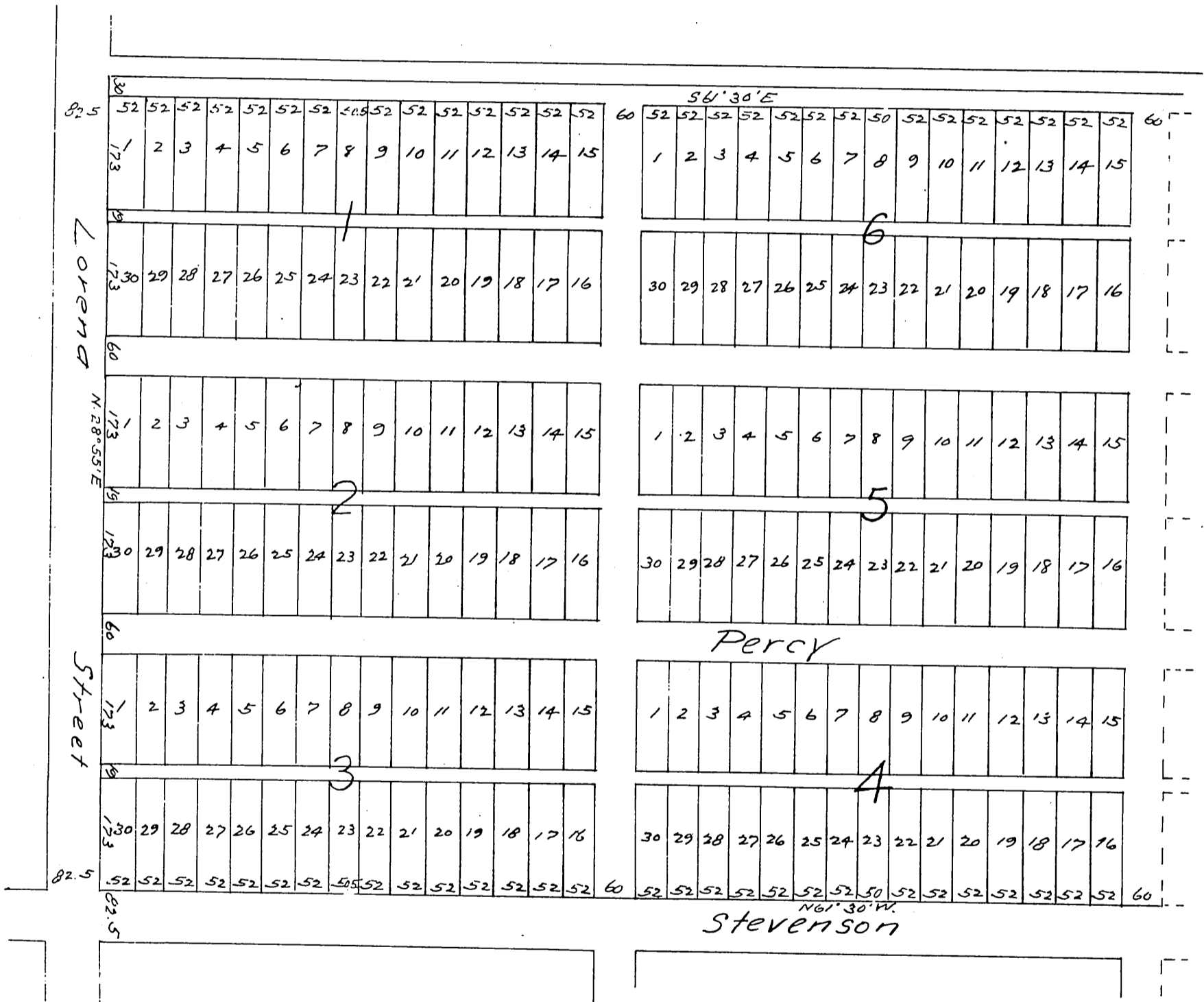


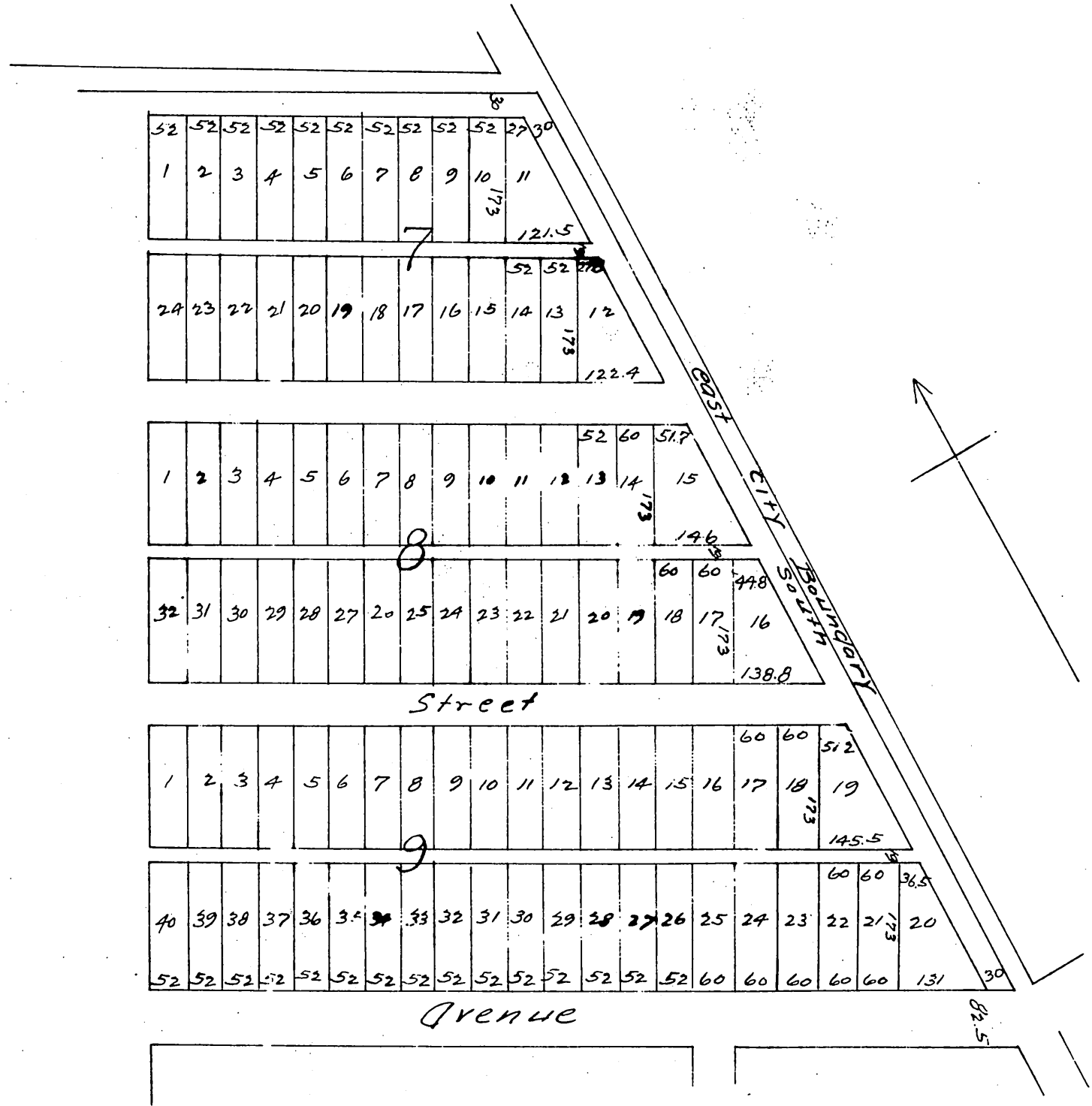
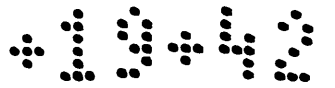
MAP OF THE SCHMITT TRACT

Lots 5, 6 & 7, Block 78 H.S.
Los Angeles City Cal.

Subdivided Oct 1886 by W.H. Tinker.

Scale 100 ft = 1 in.





A full, true and correct copy of the original (reduced to the scale of 200 feet to one inch) recorded JULY 19 1887 at 9 a.m. at request of M.L. WICKS

Frank A Gibson County Recorder
By W^m E. Johnston Deputy