

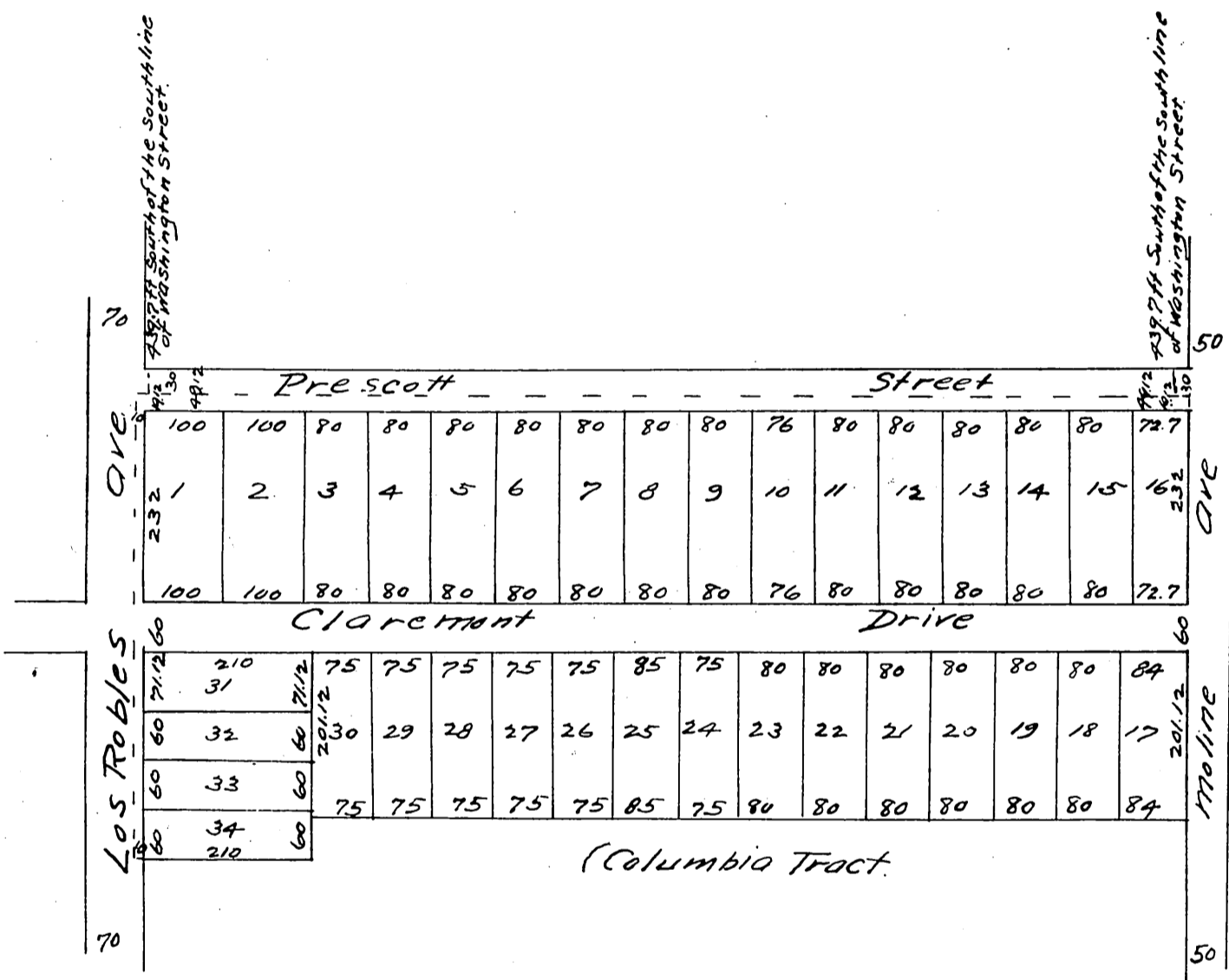
MAP of THE CLAREMONT TRACT

Situated in B1K'S of the Painter's Ball Tract

Pasadena Los Angeles Co Cal

April 1887 by Riggins & Phillips Surv's

Scale 80 ft to the inch



A full true and correct copy of the original
 (reduced to the scale of 200 feet to one inch) recorded
 July 20 1887 at 11.19 am at request of Lyman Allen
 Frank A. Gibson Co Recorder
 By Wm E. Johnston Deputy