

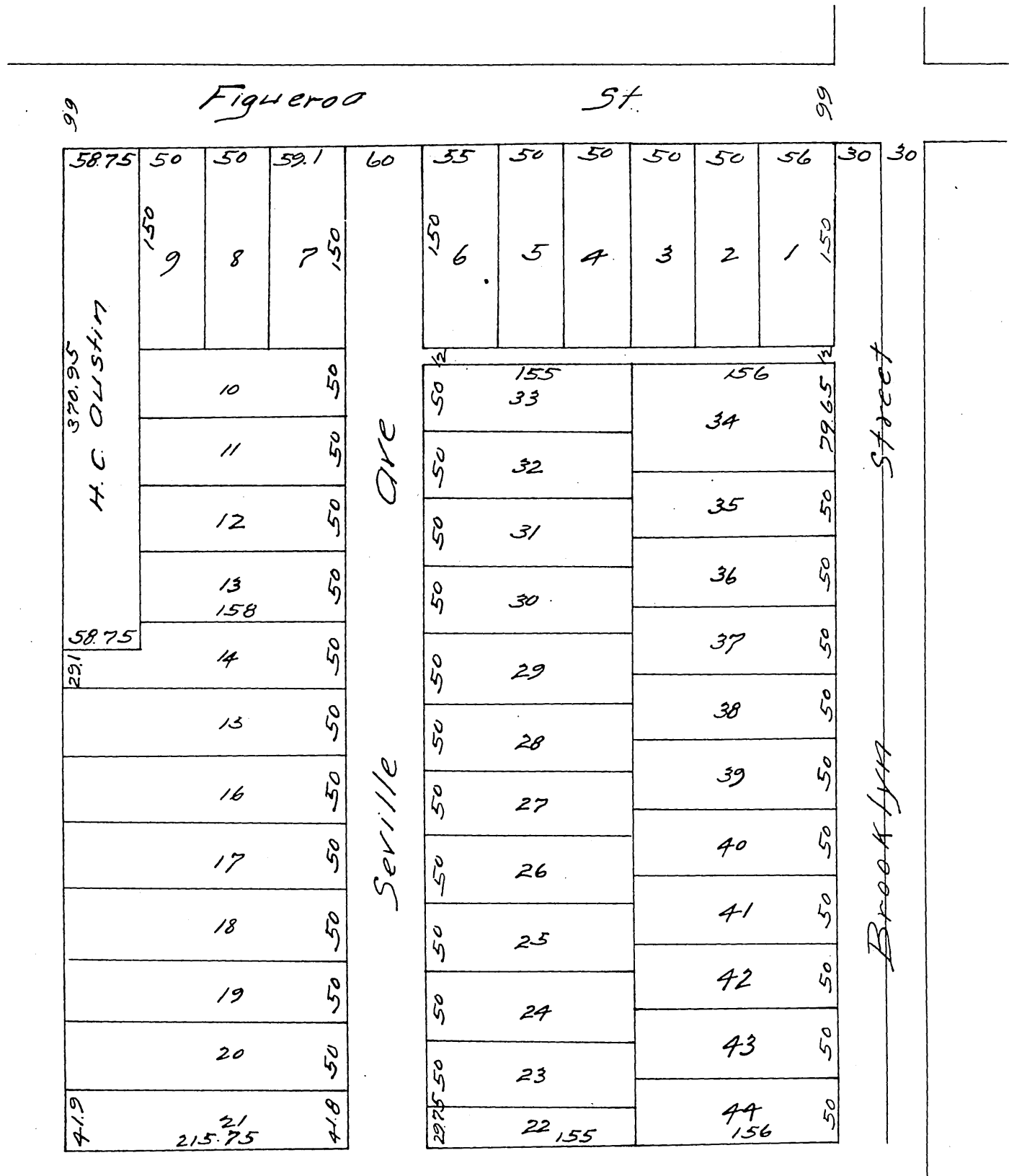
PLAT

Showing the Subdivision of
the NW 10 acres of Lot 5, Blk 2, H.S. of Los Angeles City
BEING

Stewart's Nursery Tract

Surveyed and Subdivided July 1887 by
F.D. Lanterman.

Scale 100 feet to 1 inch.



A full, true and correct copy of the original recorded
July 21st 1887 at 11⁴⁵ A.M. at request of J.M. Stewart.
Frank G. Gibson County Recorder.
By W^m E. Johnston, Deputy.